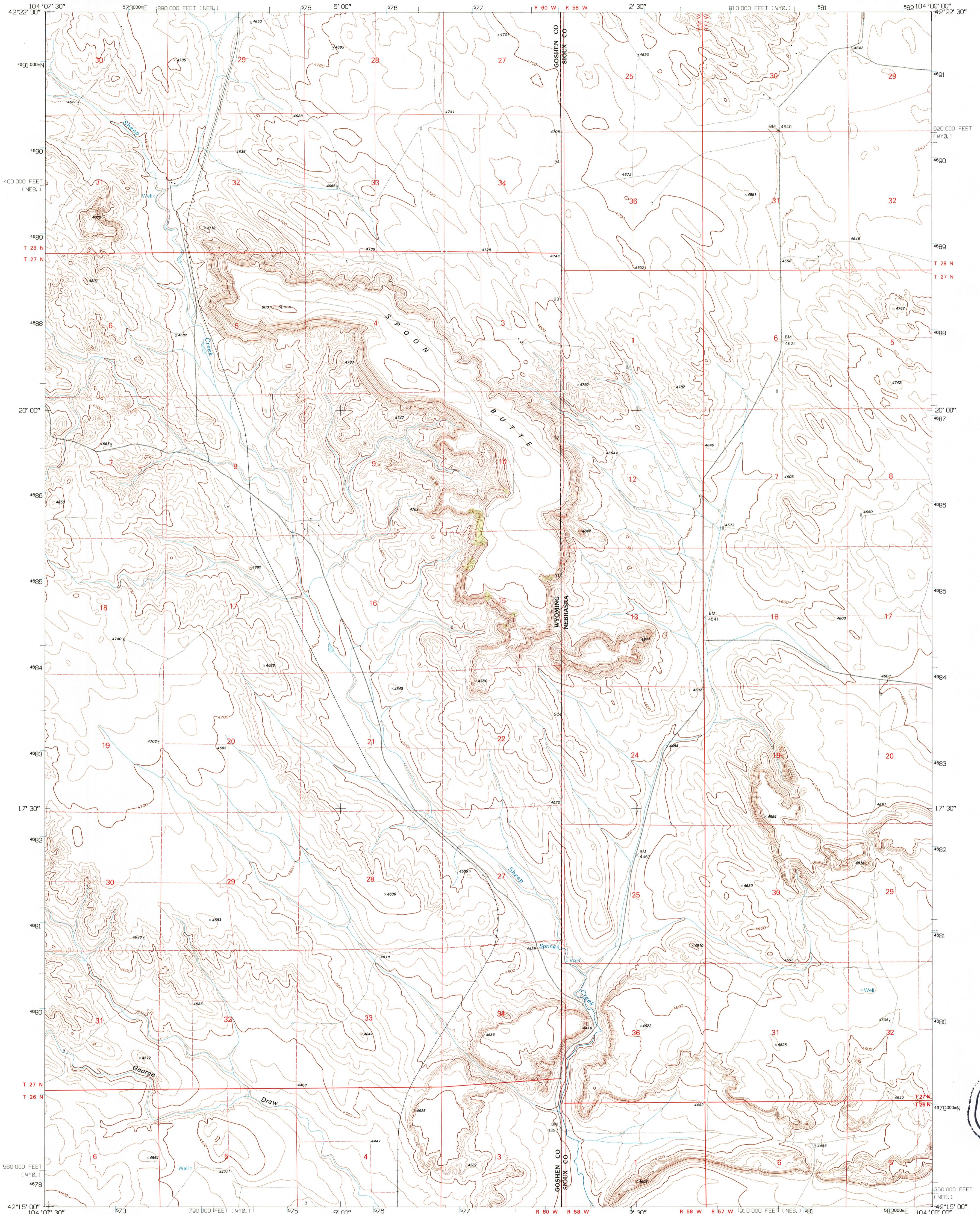


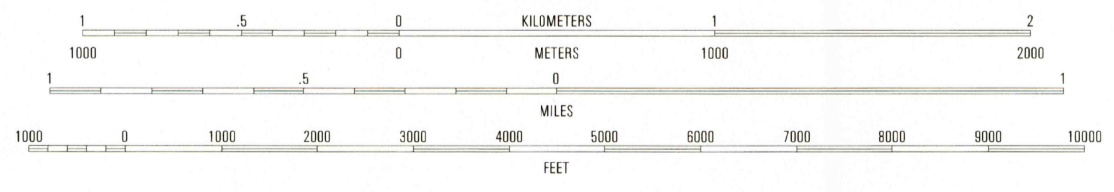
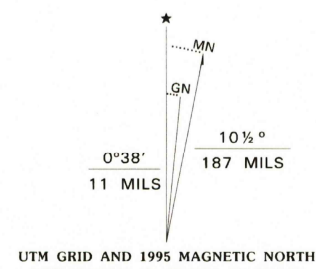
UNITED STATES  
DEPARTMENT OF THE INTERIOR  
GEOLOGICAL SURVEY

SPOON BUTTE QUADRANGLE  
WYOMING-NEBRASKA  
7.5-MINUTE SERIES (TOPOGRAPHIC)

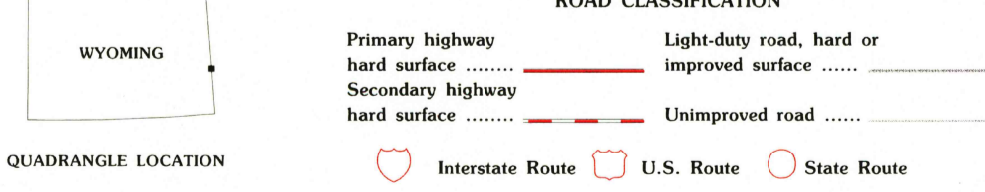


USGS AND HISTORICAL  
MAP ARCHIVES  
JUL 31 1995  
REC'D FILE COPY

Produced by the United States Geological Survey  
Control by USGS and NOS/NOAA  
Compiled from imagery dated 1973. Revised from imagery dated 1990. PLS and survey control current as of 1974. May be edited 1995. Contours and land elevations have not been revised and may conflict with other content.  
North American Datum of 1927 (NAD 27). Projection and blue 1000-meter ticks: Universal Transverse Mercator, zone 13 10 000-foot ticks: Wyoming Coordinate System, east zone and Nebraska Coordinate System, north zone  
North American Datum of 1983 (NAD 83) is shown by dashed corner ticks. The values of the shift between NAD 27 and NAD 83 for 7.5-minute intersections are obtainable from National Geodetic Survey NADCON software.  
Fine red dashed lines indicate selected fence and field lines where generally visible on aerial photographs. This information is unchecked.



SCALE 1:24 000  
CONTOUR INTERVAL 20 FEET  
NATIONAL GEODETIC VERTICAL DATUM OF 1929  
TO CONVERT FEET TO METERS MULTIPLY BY 0.3048  
TO CONVERT METERS TO FEET MULTIPLY BY 3.2808



QUADRANGLE LOCATION

1	2	3
4	5	6
7	8	

ADJOINING 7.5' QUADRANGLE NAMES

1	Spoon Butte NW
2	Line Sand Hill
3	Agate NW
4	Spoon Butte SW
5	Agate SW
6	Tea Kettle Rock
7	Carpenter Ranch
8	Chalk Buttes

**SPOON BUTTE, WY-NE**  
42104-C1-TF-024  
1990  
DMA 5168 I SE-SERIES 8747

THIS MAP COMPLIES WITH NATIONAL MAP ACCURACY STANDARDS  
FOR SALE BY U.S. GEOLOGICAL SURVEY  
DENVER, COLORADO 80225, OR RESTON, VIRGINIA 22092  
A FOLDER DESCRIBING TOPOGRAPHIC MAPS AND SYMBOLS IS AVAILABLE ON REQUEST

ISBN 0-407-00566-6  
9 780607 005664