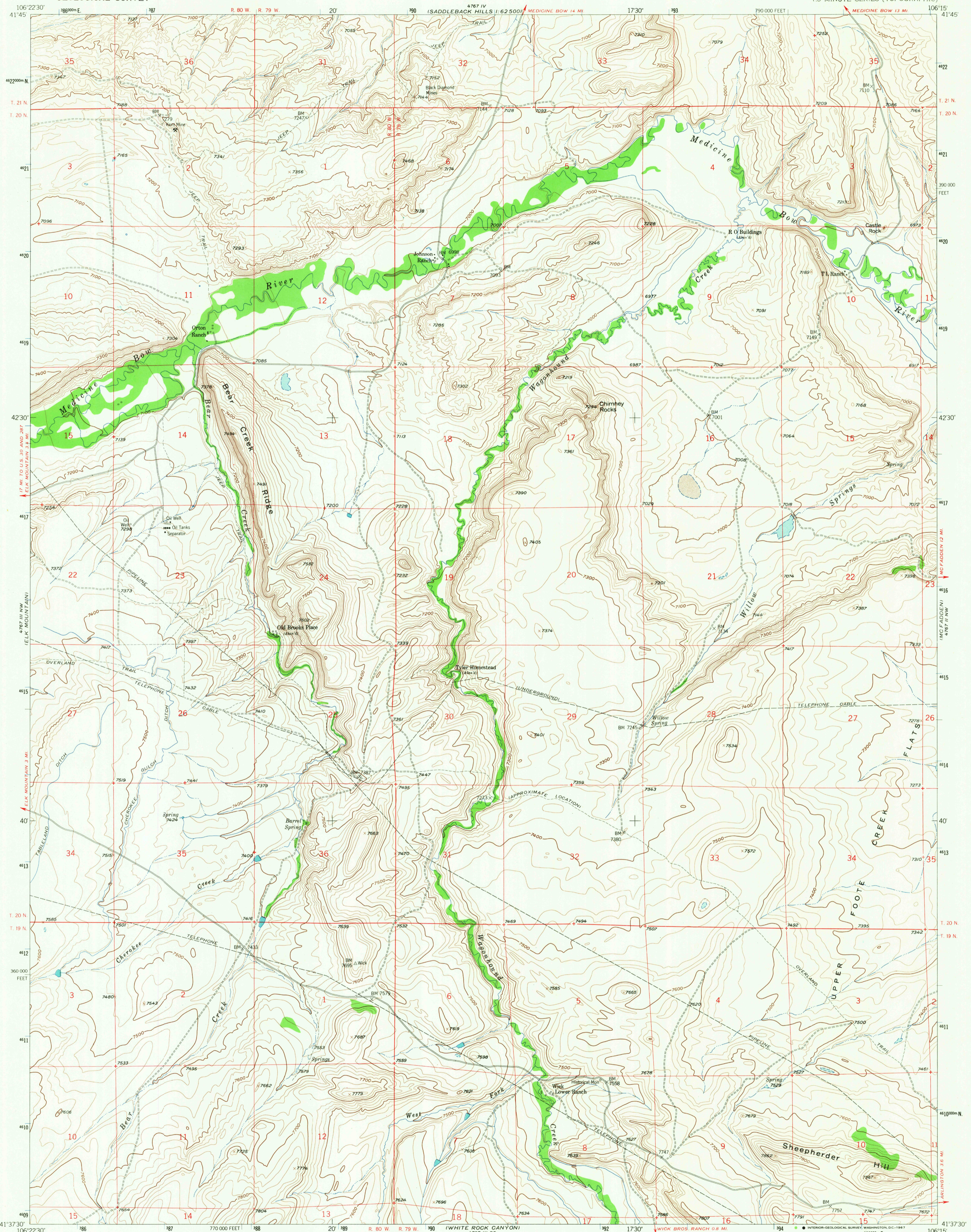
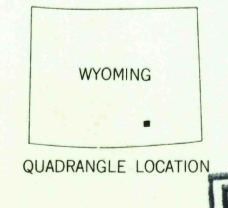
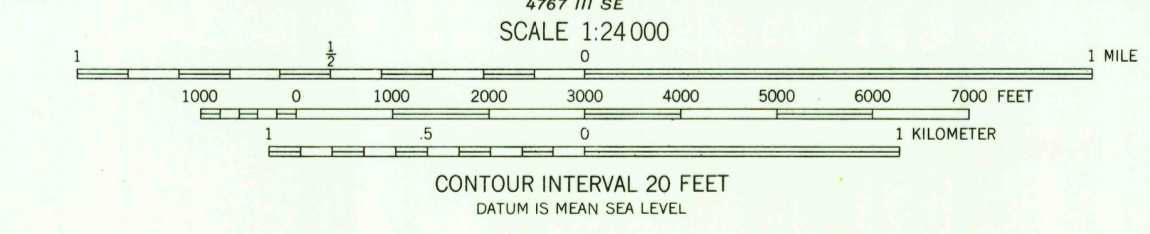
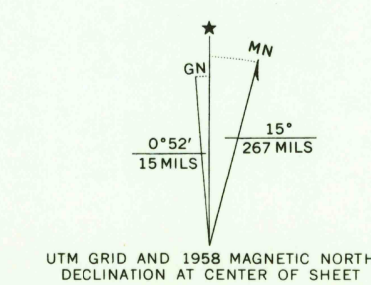


SADDLEBACK HILLS  
4767 IV  
1:62,500

WICK BROS. RANCH  
0.8 MI.  
4767 III SE  
1:62,500



Maped, edited, and published by the Geological Survey as part of the Department of the Interior program for the development of the Missouri River Basin. Control by USGS and USC&GS. Topography from aerial photographs by photogrammetric methods. Aerial photographs taken 1952. Field check 1958. Polyconic projection. 1927 North American datum. 10,000-foot grid based on Wyoming coordinate system, east central zone. 1000-meter Universal Transverse Mercator grid ticks, zone 13, shown in blue. Dashed land lines indicate approximate locations.



U.S.G.S.  
TOPOGRAPHIC DIVISION

T L RANCH, WYO.  
N4137.5-W10615/7.5

1958  
AMS 4767 III NE-SERIES V874

THIS MAP COMPLIES WITH NATIONAL MAP ACCURACY STANDARDS  
FOR SALE BY U. S. GEOLOGICAL SURVEY, DENVER, COLORADO 80225 OR WASHINGTON, D. C. 20242  
A FOLDER DESCRIBING TOPOGRAPHIC MAPS AND SYMBOLS IS AVAILABLE ON REQUEST

RETURN TO:  
USGS AND HISTORICAL MAP ARCHIVES

2715  
AUG 7 1967