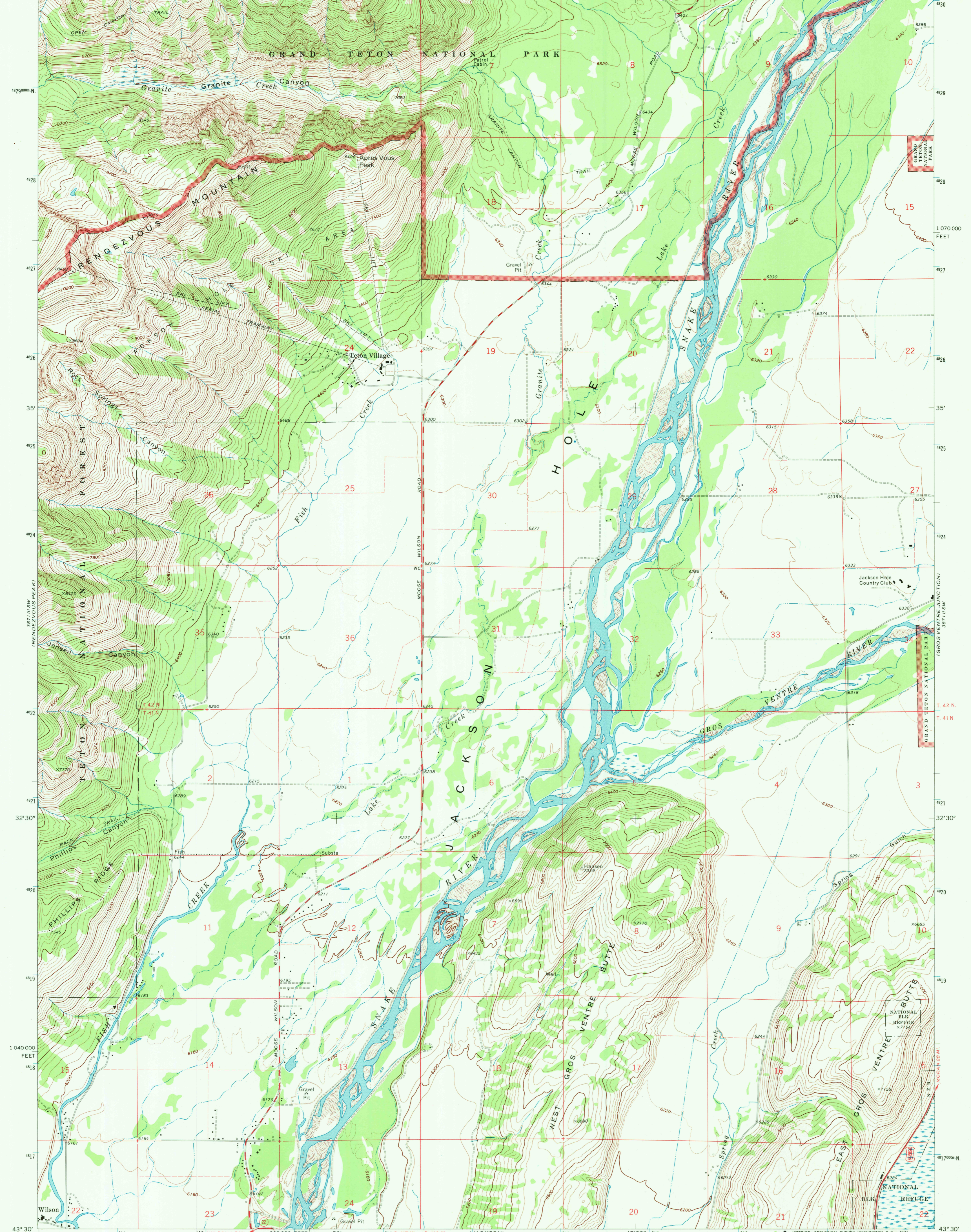
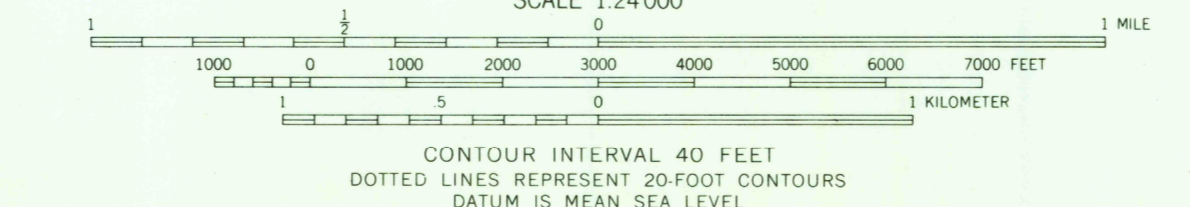
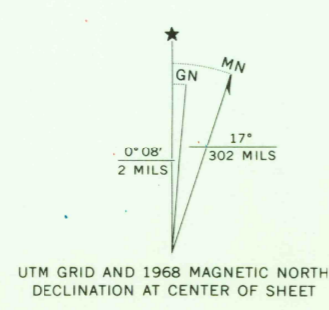


110° 52' 30" 111° 00' 00" E 112 113 50' 114 R 117 W R 116 W (GRAND TETON) 116 47' 30" 117 MOOSE 4.4 MI 118 119 120 110° 45' 43' 37' 30" 43° 37' 30"

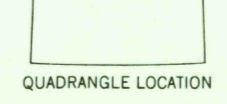


Mapped, edited, and published by the Geological Survey
Control by USGS and USC&GS
Topography by photogrammetric methods from aerial photographs taken 1967. Field checked 1968.
Polyconic projection, 1927 North American datum
10,000-foot grid based on Wyoming coordinate system, west zone
1000-meter Universal Transverse Mercator grid ticks, zone 12, shown in blue
Fine red dashed lines indicate selected fence lines
Where omitted, land lines have not been established



ROAD CLASSIFICATION

Primary highway, all weather, hard surface	Light-duty road, all weather, improved surface
Secondary highway, all weather, hard surface	Unimproved road, fair or dry weather
U. S. Route	State Route



THIS MAP COMPLIES WITH NATIONAL MAP ACCURACY STANDARDS
FOR SALE BY U. S. GEOLOGICAL SURVEY, DENVER, COLORADO 80225, OR WASHINGTON, D. C. 20242
A FOLDER DESCRIBING TOPOGRAPHIC MAPS AND SYMBOLS IS AVAILABLE ON REQUEST

USGS HISTORICAL FILE TOPOGRAPHIC DIVISION
TETON VILLAGE, WYO.
N4330-W11045/7.5
1968
AMS 3871 III SE—SERIES V874

2475
NOV 1 - 1971

RETURN TO:
USGS AND HISTORICAL MAP ARCHIVES