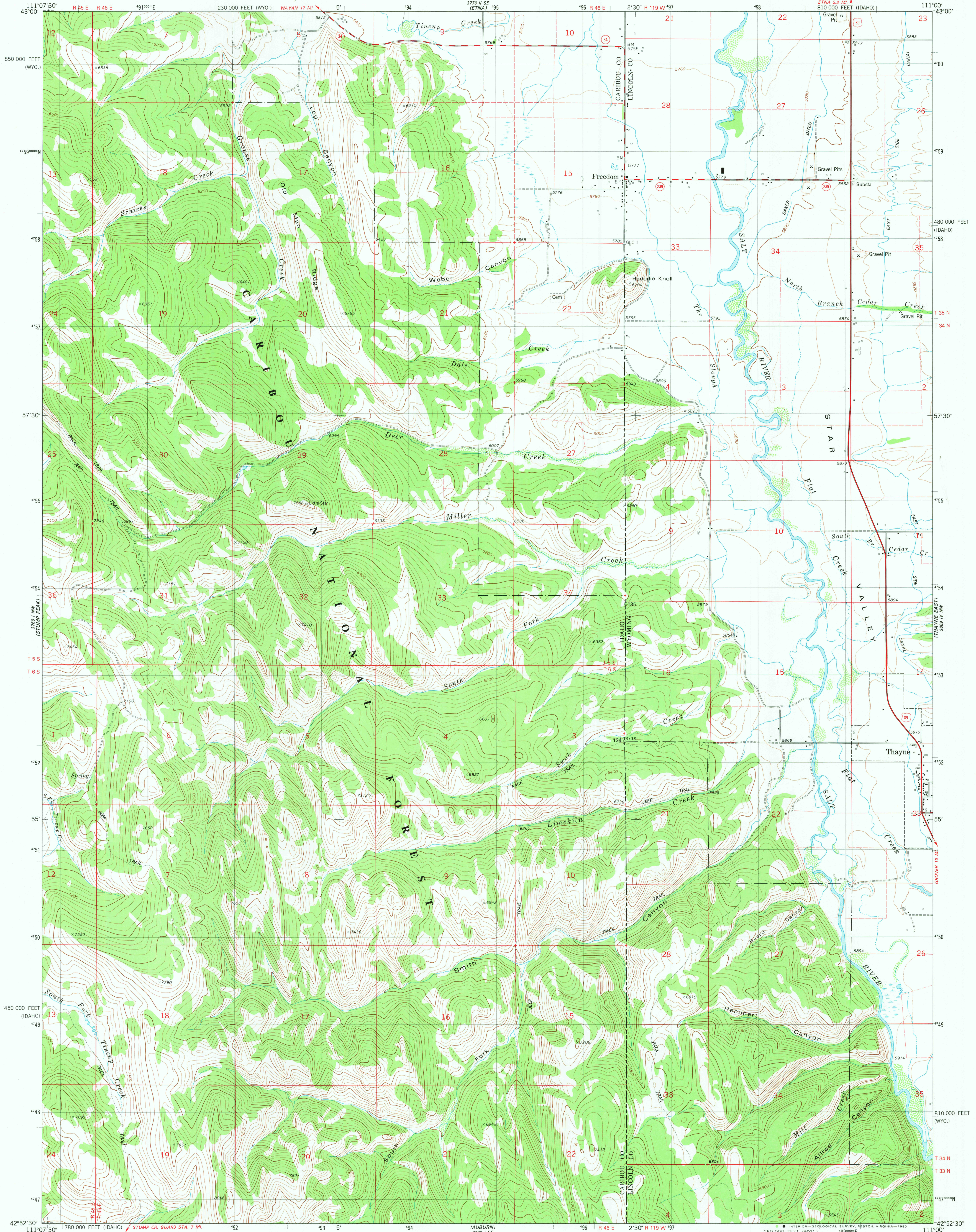
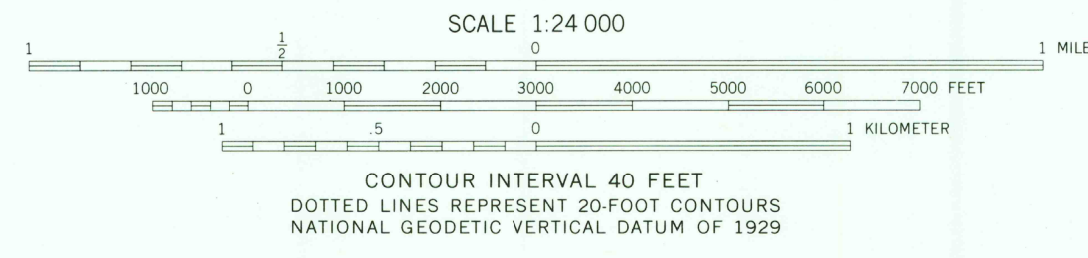
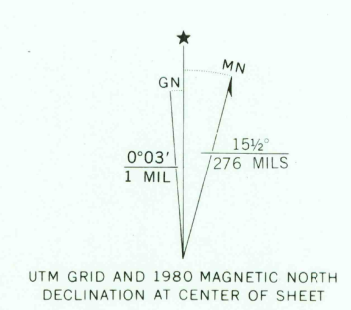


UNITED STATES
DEPARTMENT OF THE INTERIOR
GEOLOGICAL SURVEY

THAYNE WEST QUADRANGLE
WYOMING-IDAHO
7.5 MINUTE SERIES (TOPOGRAPHIC)



Mapped, edited, and published by the Geological Survey
Control by USGS and NOS/NOAA
Topography by photogrammetric methods from aerial photographs taken 1971 and 1973. Field checked 1974. Map edited 1980
Projection: Idaho coordinate system, east zone (transverse Mercator)
10,000-foot grid ticks based on Idaho coordinate system, east zone and Wyoming coordinate system, west zone 1000-meter Universal Transverse Mercator grid, zone 12 1927 North American datum
To place on the predicted North American Datum 1983 move the projection lines 11 meters north and 63 meters east as shown by dashed corner ticks
Fine red dashed lines indicate selected fence lines
There may be private inholdings within the boundaries of the National or State reservations shown on this map



ROAD CLASSIFICATION

| | |
|---------------------------------|---|
| Primary highway, hard surface | Light duty road, hard or improved surface |
| Secondary highway, hard surface | Unimproved road |
| Interstate Route | U. S. Route |
| | State Route |



THIS MAP COMPLIES WITH NATIONAL MAP ACCURACY STANDARDS
FOR SALE BY U. S. GEOLOGICAL SURVEY, DENVER, COLORADO 80225, OR RESTON, VIRGINIA 22092
A FOLDER DESCRIBING TOPOGRAPHIC MAPS AND SYMBOLS IS AVAILABLE ON REQUEST

USGS THAYNE WEST, WYO.-IDAHO
NE4 FREEDOM 10' QUADRANGLE
N4252.5-W111007.5
1980
DMA 3769 1E-SERIES V893

RETURN TO:
USGS AND HISTORICAL MAP ARCHIVES

NOV 12 1980

2600