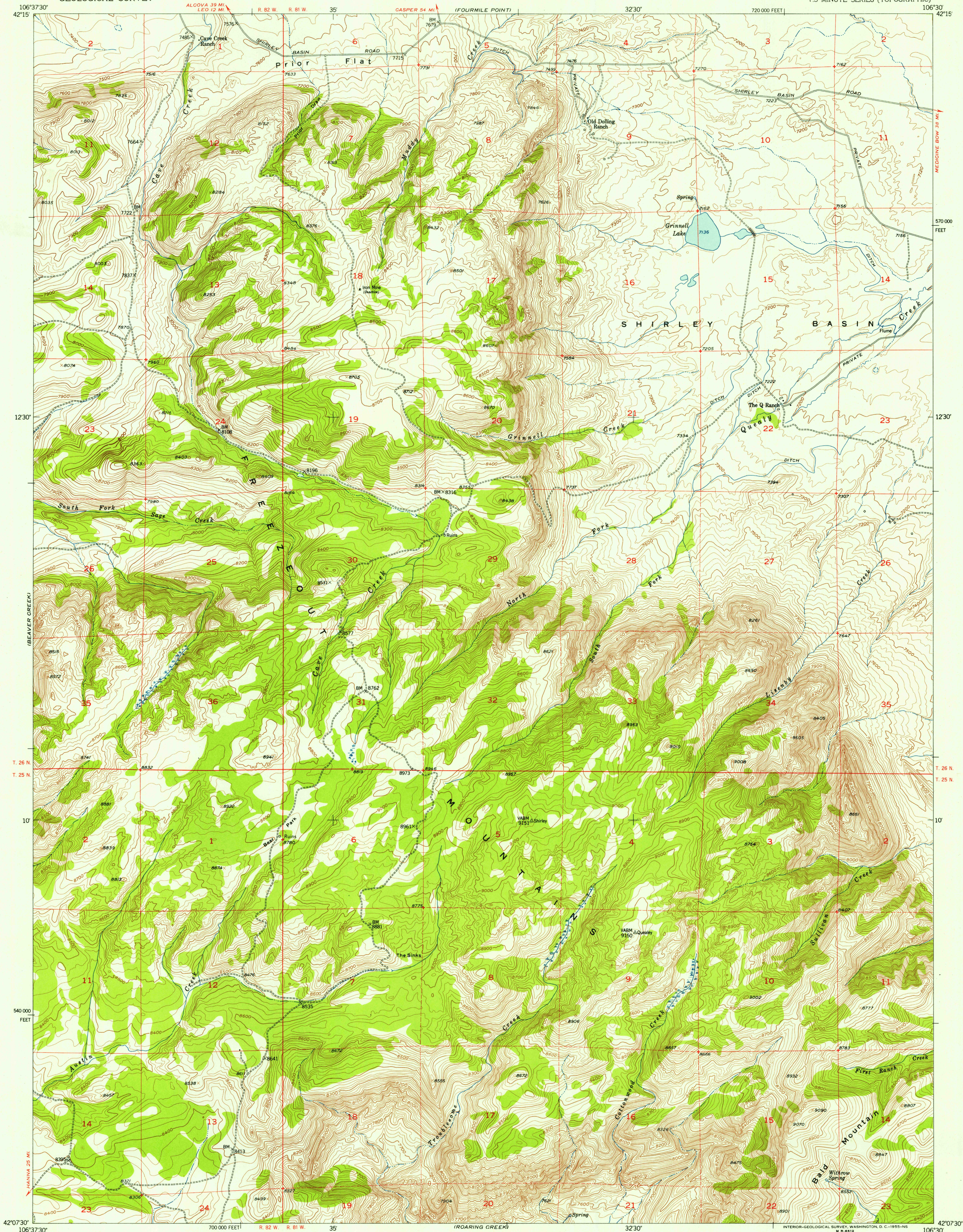


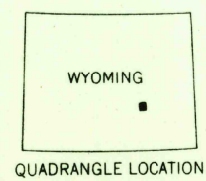
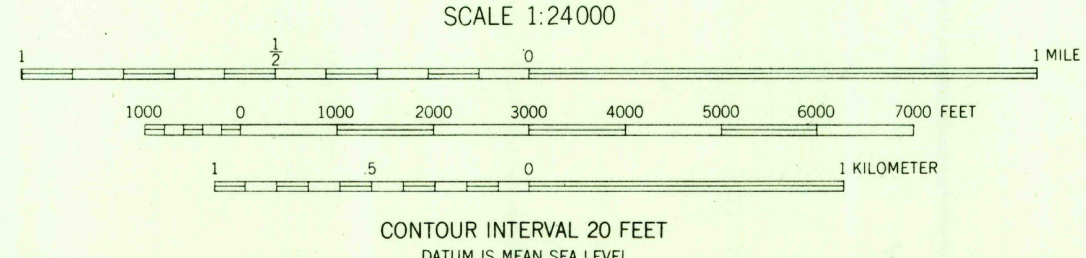
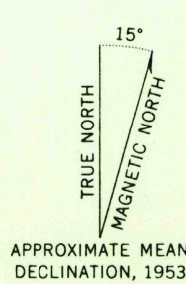
U.S.G.S.
FILE COPY
TOPOGRAPHIC DIVISION



RETURN TO:
USGS AND HISTORICAL MAP ARCHIVES

U.S.G.S.
FILE COPY
TOPOGRAPHIC DIVISION

Mapped, edited, and published by the Geological Survey as part of the Department of the Interior program for the development of the Missouri River Basin Control by USGS and USC&GS
Topography from aerial photographs by multiplex methods
Aerial photographs taken 1949. Field check 1953
Polyconic projection, 1927 North American datum
10,000-foot grid based on Wyoming coordinate system, east central zone
Dashed land lines indicate approximate locations



ROAD CLASSIFICATION

Heavy-duty	Light-duty
Medium-duty	Unimproved dirt
U. S. Route	State Route

THE Q RANCH, WYO.
N4207.5-W10630/7.5
1953