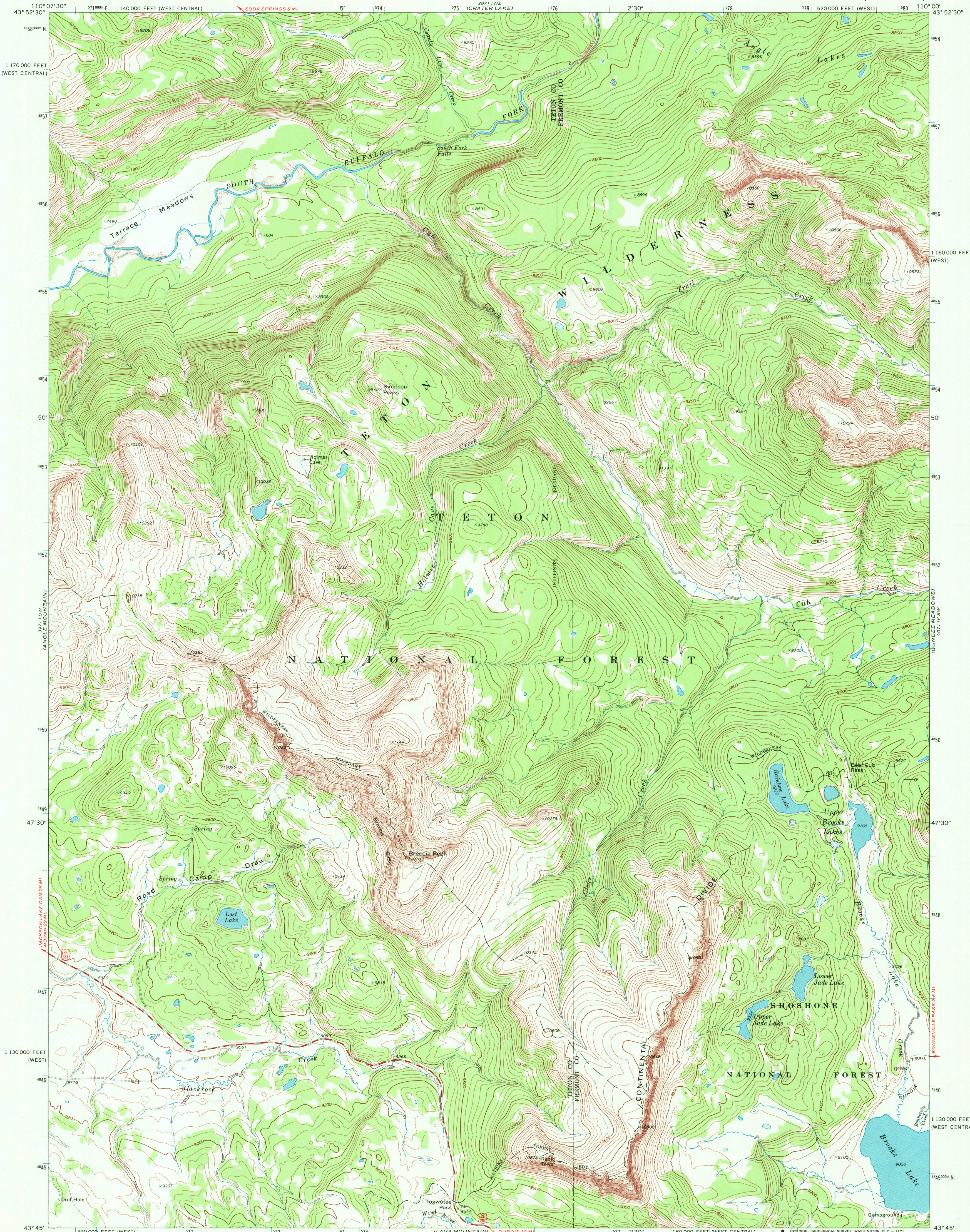
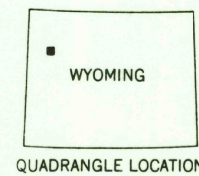
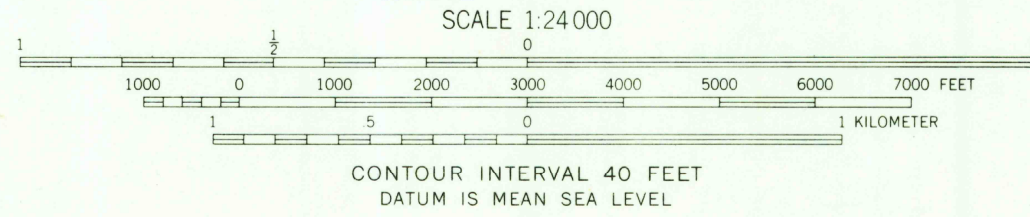
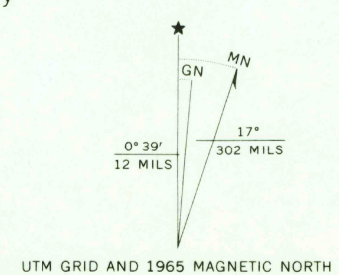


UNITED STATES
DEPARTMENT OF THE INTERIOR
GEOLOGICAL SURVEY

TOGWOTEE PASS QUADRANGLE
WYOMING
7.5 MINUTE SERIES (TOPOGRAPHIC)



Mapped, edited, and published by the Geological Survey
Control by USGS and USC&GS
Topography by photogrammetric methods from aerial
photographs taken 1964. Field checked 1965
Polyconic projection. 1927 North American datum
10,000-foot grid based on Wyoming coordinate system,
west and west central zones
1000-meter Universal Transverse Mercator grid ticks,
zone 12, shown in blue
Land lines have not been established in this area



ROAD CLASSIFICATION
Secondary highway, all weather, Light-duty road, all weather,
hard surface Improved surface
Unimproved road, fair or dry
weather
U.S. Route

TOGWOTEE PASS, WYO.
N4345-W11000/7.5

1965
AMS 3971 I SE-SERIES V874

THIS MAP COMPLIES WITH NATIONAL MAP ACCURACY STANDARDS
FOR SALE BY U.S. GEOLOGICAL SURVEY, DENVER, COLORADO 80225, OR WASHINGTON, D. C. 20242
A FOLDER DESCRIBING TOPOGRAPHIC MAPS AND SYMBOLS IS AVAILABLE ON REQUEST

RETURN TO:
USGS AND HISTORICAL MAP ARCHIVES

2395
DEC 17 1971

USGS
HISTORICAL FILE
TOPOGRAPHIC DIVISION