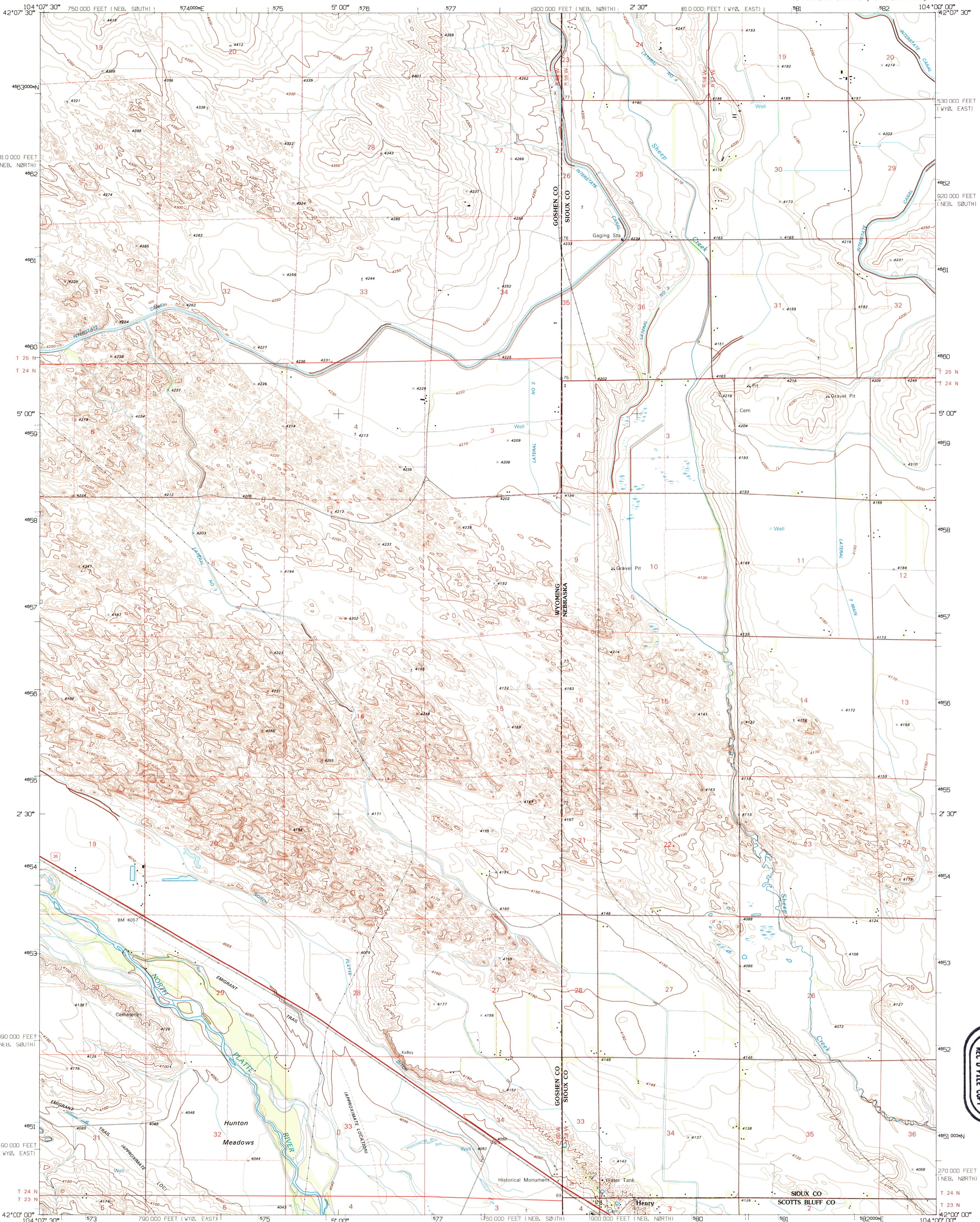
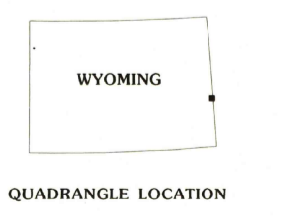
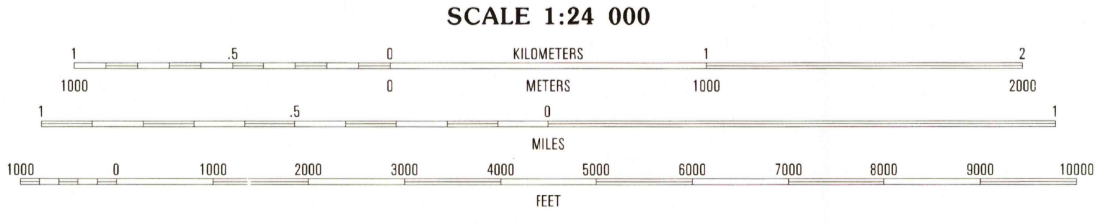
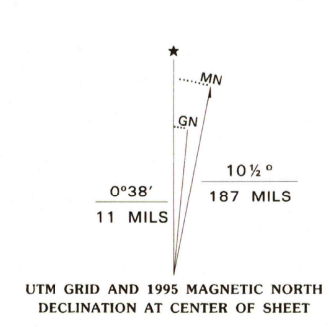


UNITED STATES  
DEPARTMENT OF THE INTERIOR  
GEOLOGICAL SURVEY

TORRINGTON SE QUADRANGLE  
WYOMING-NEBRASKA  
7.5-MINUTE SERIES (TOPOGRAPHIC)



Produced by the United States Geological Survey  
Control by USGS and NOS/NOAA  
Compiled from imagery dated 1962. Revised from imagery dated 1990. PLUS and survey control current as of 1963. Map edited 1995. Contours and land elevations have not been revised and may conflict with other content.  
North American Datum of 1927 (NAD 27). Projection and blue 1000-meter ticks: Universal Transverse Mercator, zone 13 10 000-foot ticks: Wyoming Coordinate System, east zone and Nebraska Coordinate System, north and south zones.  
North American Datum of 1983 (NAD 83) is shown by dashed corner ticks. The values of the shift between NAD 27 and NAD 83 for 7.5-minute intersections are obtainable from National Geodetic Survey NADCON software.  
Fine red dashed lines indicate selected fence and field lines where generally visible on aerial photographs. This information is unchecked.



ROAD CLASSIFICATION

Primary highway hard surface	Light-duty road, hard or improved surface
Secondary highway hard surface	Unimproved road
Interstate Route	U.S. Route
	State Route

CONTOUR INTERVAL 10 FEET  
SUPPLEMENTARY CONTOUR INTERVAL 05 FEET  
NATIONAL GEODETIC VERTICAL DATUM OF 1929  
TO CONVERT FEET TO METERS MULTIPLY BY 0.3048  
TO CONVERT METERS TO FEET MULTIPLY BY 3.2808

1	2	3
4	5	6
7	8	

TORRINGTON SE, WY-NE  
42104-A1-TF-024  
1990

THIS MAP COMPLIES WITH NATIONAL MAP ACCURACY STANDARDS  
FOR SALE BY U.S. GEOLOGICAL SURVEY  
DENVER, COLORADO 80225, OR RESTON, VIRGINIA 22092  
A FOLDER DESCRIBING TOPOGRAPHIC MAPS AND SYMBOLS IS AVAILABLE ON REQUEST

DMA 5168 II SE-SERIES V872 8 JUL 1995

