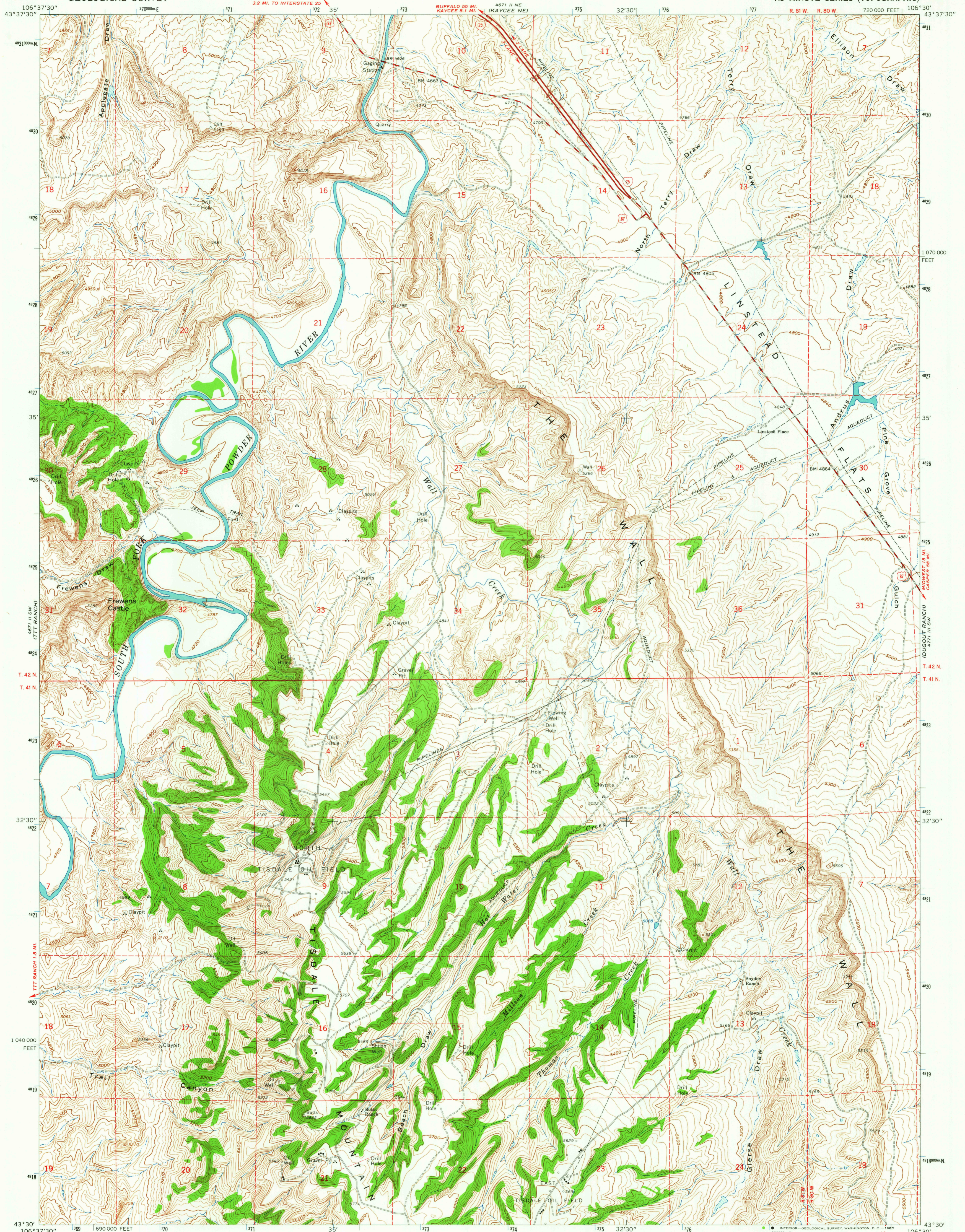
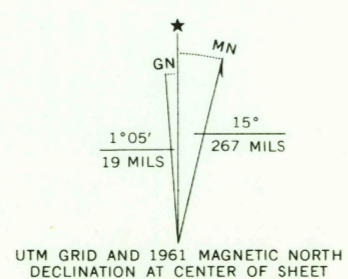


4671 II SW
(KAYCEE)

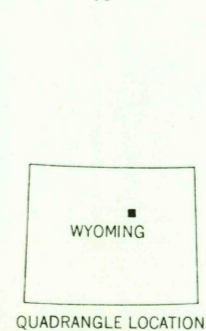
4771 III NW
(FIGURE 6 RESERVOIR)



Mapped, edited, and published by the Geological Survey
Control by USGS and USC&GS
Topography by photogrammetric methods from aerial
photographs taken 1956 and 1957. Field checked 1961
Polyconic projection. 1927 North American datum
10,000-foot grid based on Wyoming coordinate system,
east central zone
1000-meter Universal Transverse Mercator grid ticks,
zone 13, shown in blue
Fine red dashed lines indicate selected fence lines



SCALE 1:24 000
CONTOUR INTERVAL 20 FEET
DATUM IS MEAN SEA LEVEL
THIS MAP COMPLIES WITH NATIONAL MAP ACCURACY STANDARDS
FOR SALE BY U. S. GEOLOGICAL SURVEY, DENVER 25, COLORADO OR WASHINGTON 25, D. C.
A FOLDER DESCRIBING TOPOGRAPHIC MAPS AND SYMBOLS IS AVAILABLE ON REQUEST



ROAD CLASSIFICATION
Heavy-duty ——— Light-duty ———
Medium-duty ——— Unimproved dirt ———
Interstate Route (Red circle with 'I') U.S. Route (Red circle with 'U.S.')
WALL CREEK, WYO.
N4330—W10630/7.5
1961
AMS 4671 II SE—SERIES V874

U.S.G.S.
FILE COPY
TOPOGRAPHIC DIVISION
FEB 3 1965
2570

RETURN TO:
USGS AND HISTORICAL MAP ARCHIVES