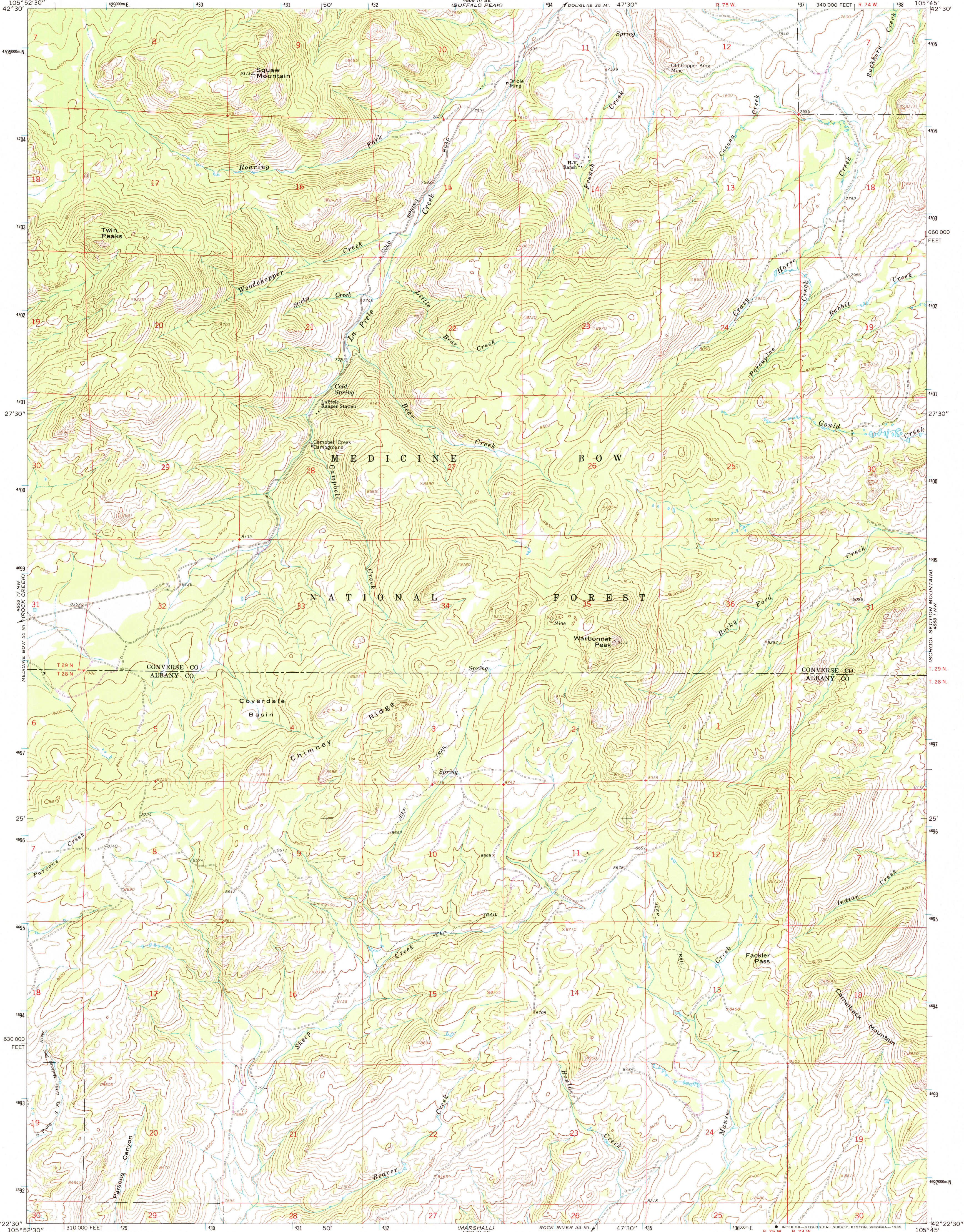


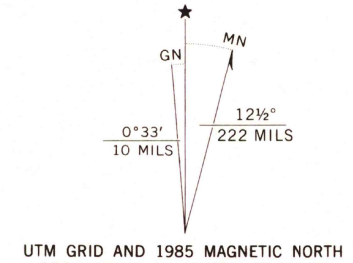
UNITED STATES
DEPARTMENT OF THE INTERIOR
GEOLOGICAL SURVEY

WARBONNET PEAK QUADRANGLE
WYOMING
7.5 MINUTE SERIES (TOPOGRAPHIC)

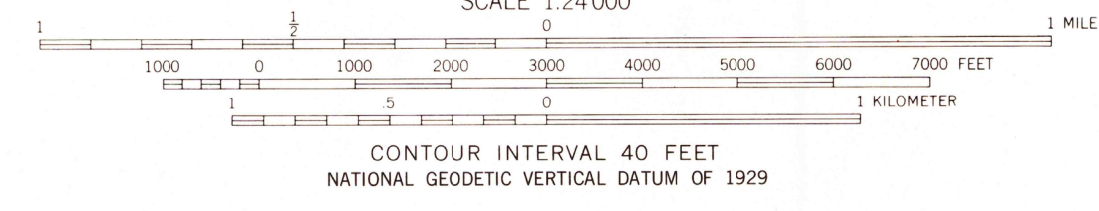


LEG
OCT 18 1985
REFERENCE COULDTERRAIN

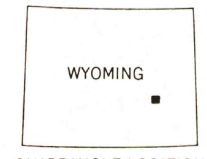
Mapped, edited, and published by the Geological Survey
Control by USGS and NOS/NOAA
Topography by photogrammetric methods from aerial photographs taken 1963. Field checked 1964
Polyconic projection. 1927 North American Datum
10,000-foot grid based on Wyoming coordinate system, east zone
1000-meter Universal Transverse Mercator grid ticks, zone 13, shown in blue
To place on the predicted North American Datum 1983 move the projection lines 7 meters north and 49 meters east as shown by dashed corner ticks
There may be private inholdings within the boundaries of the National or State reservations shown on this map



UTM GRID AND 1985 MAGNETIC NORTH DECLINATION AT CENTER OF SHEET
Revisions shown in purple compiled from aerial photographs taken 1981 and other source data. Partial field check by U. S. Forest Service. Map edited 1985



SCALE 1:24 000
CONTOUR INTERVAL 40 FEET
NATIONAL GEODETIC VERTICAL DATUM OF 1929



ROAD CLASSIFICATION
Light-duty ——— Unimproved dirt - - - - -

WARBONNET PEAK, WYO.
42105-D7-TF-024

1964
PHOTOREVISED 1985
DMA 4868 IV NE-SERIES V 874

THIS MAP COMPLIES WITH NATIONAL MAP ACCURACY STANDARDS
FOR SALE BY U. S. GEOLOGICAL SURVEY, DENVER, COLORADO 80225, OR RESTON, VIRGINIA 22092
A FOLDER DESCRIBING TOPOGRAPHIC MAPS AND SYMBOLS IS AVAILABLE ON REQUEST