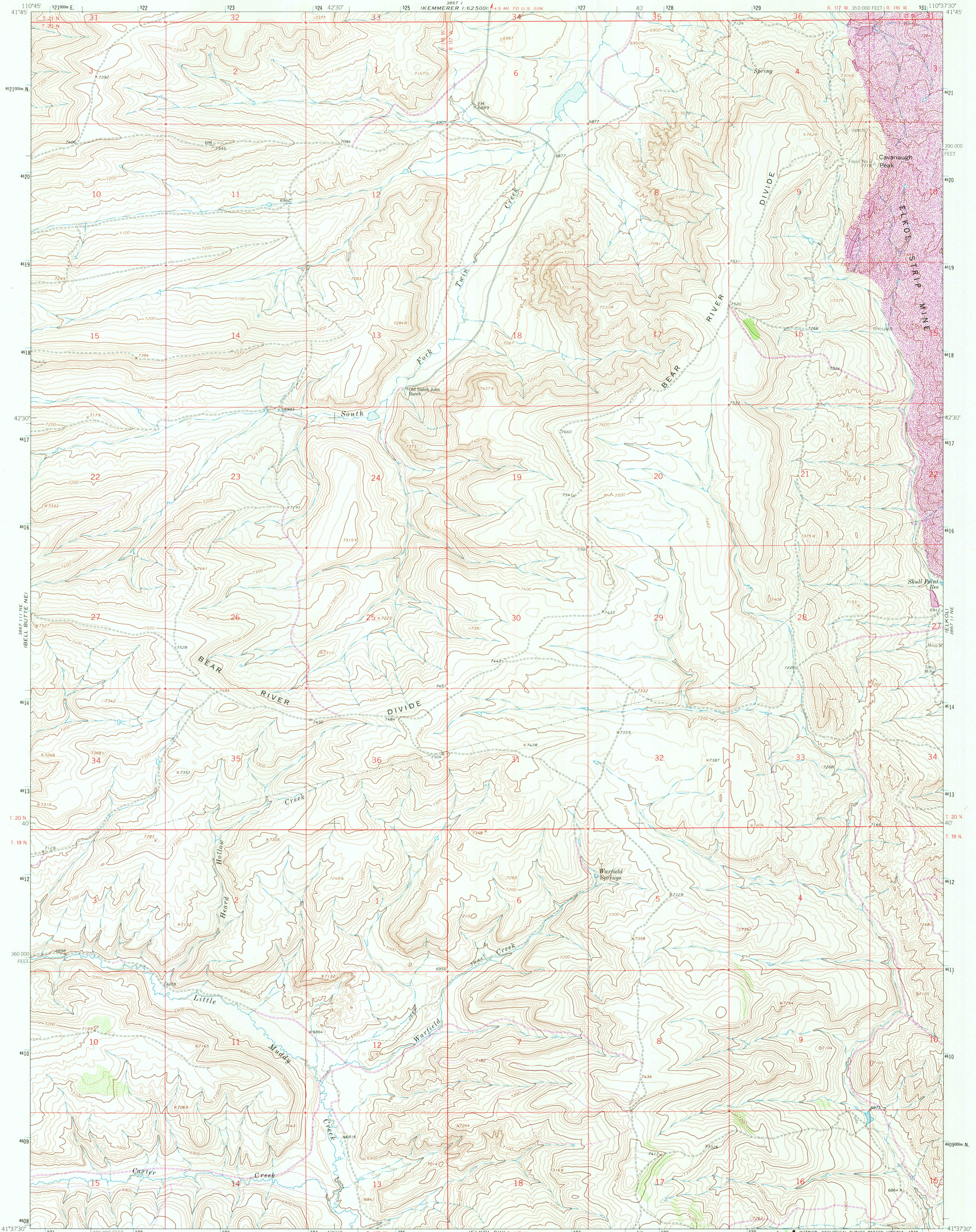




3867 I
KEMMERER 1:62,500
4.5 MI TO U.S. 30N



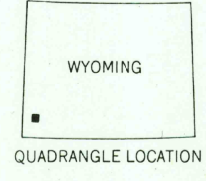
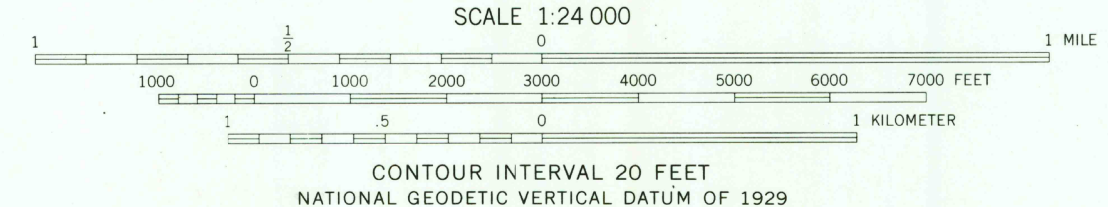
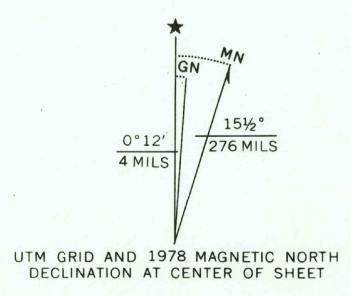
Mapped, edited, and published by the Geological Survey

Control by USGS and NOS/NOAA

Topography by photogrammetric methods from aerial photographs taken 1961. Field checked 1962

Polyconic projection. 1927 North American datum. 10,000-foot grid based on Wyoming coordinate system, west zone 1000-meter Universal Transverse Mercator grid ticks, zone 12, shown in blue

Revisions shown in purple compiled from aerial photographs taken 1976 and other source data. This information not field checked. Map edited 1978



ROAD CLASSIFICATION
Light-duty ——— Unimproved dirt ———

THIS MAP COMPLIES WITH NATIONAL MAP ACCURACY STANDARDS
FOR SALE BY U. S. GEOLOGICAL SURVEY, DENVER, COLORADO 80225, OR RESTON, VIRGINIA 22092
A FOLDER DESCRIBING TOPOGRAPHIC MAPS AND SYMBOLS IS AVAILABLE ON REQUEST

USGS
Historical File
Geographic Division

WARFIELD CREEK, WYO.
N4137.5-W11037.5/7.5
1962
PHOTOREVISED 1978
DMA 3867 11 NW-SERIES V874

RETURN TO:
USGS AND HISTORICAL MAP ARCHIVES

3650
DEC 14 1980