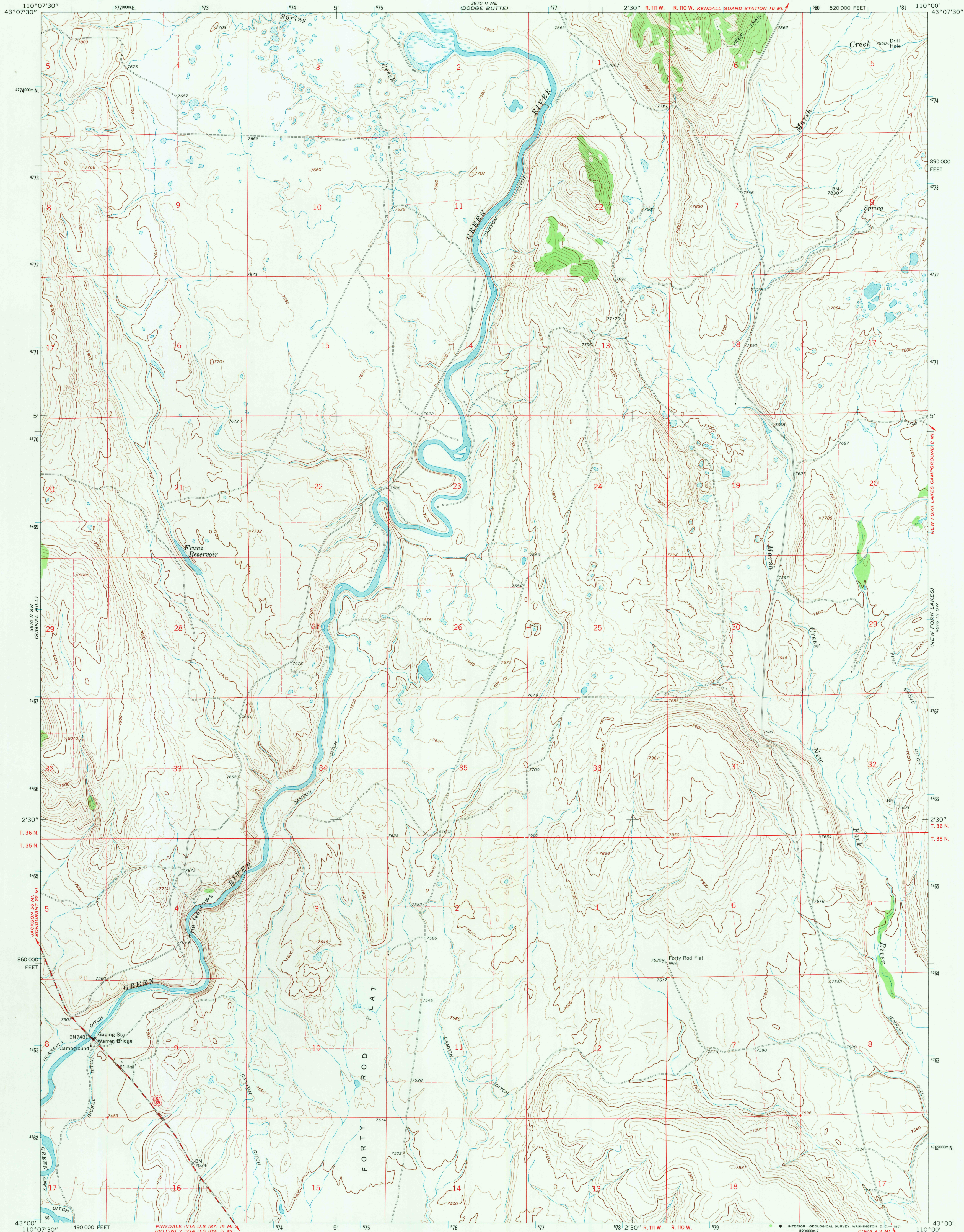
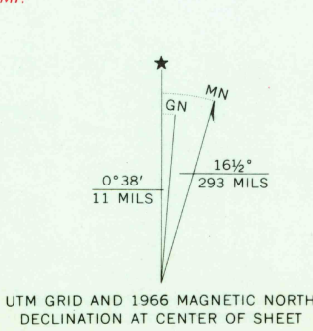


UNITED STATES  
DEPARTMENT OF THE INTERIOR  
GEOLOGICAL SURVEY

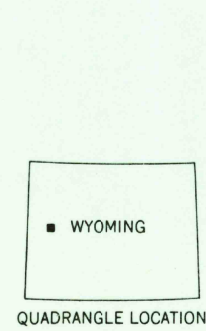
WARREN BRIDGE QUADRANGLE  
WYOMING—SUBLETTE CO.  
7.5 MINUTE SERIES (TOPOGRAPHIC)



Mapped, edited, and published by the Geological Survey  
Control by USGS and USC&GS  
Topography by photogrammetric methods from aerial  
photographs taken 1966. Field checked 1966  
Polyconic projection. 1927 North American datum  
10,000-foot grid based on Wyoming coordinate system,  
west zone  
1000-meter Universal Transverse Mercator grid ticks,  
zone 12, shown in blue  
Fine red dashed lines indicate selected fence lines



SCALE 1:24,000  
1 1000 0 1000 2000 3000 4000 5000 6000 7000 FEET  
1 5 10 15 20 25 30 35 40 45 50 KILOMETER  
CONTOUR INTERVAL 20 FEET  
DATUM IS MEAN SEA LEVEL  
THIS MAP COMPLIES WITH NATIONAL MAP ACCURACY STANDARDS  
FOR SALE BY U.S. GEOLOGICAL SURVEY, DENVER, COLORADO 80225, OR WASHINGTON, D.C. 20024  
A FOLDER DESCRIBING TOPOGRAPHIC MAPS AND SYMBOLS IS AVAILABLE ON REQUEST



ROAD CLASSIFICATION  
Medium-duty ——— Light-duty ———  
Unimproved dirt ———  
U.S. Route

WARREN BRIDGE, WYO.  
N4300—W11000/7.5

1966  
AMS 3970 II SE—SERIES V874

U.S.G.S.  
FINE COPY  
TOPOGRAPHIC DIVISION  
2460

JUN 21 1971

RETURN TO:  
USGS NHD HISTORICAL MAP ARCHIVES