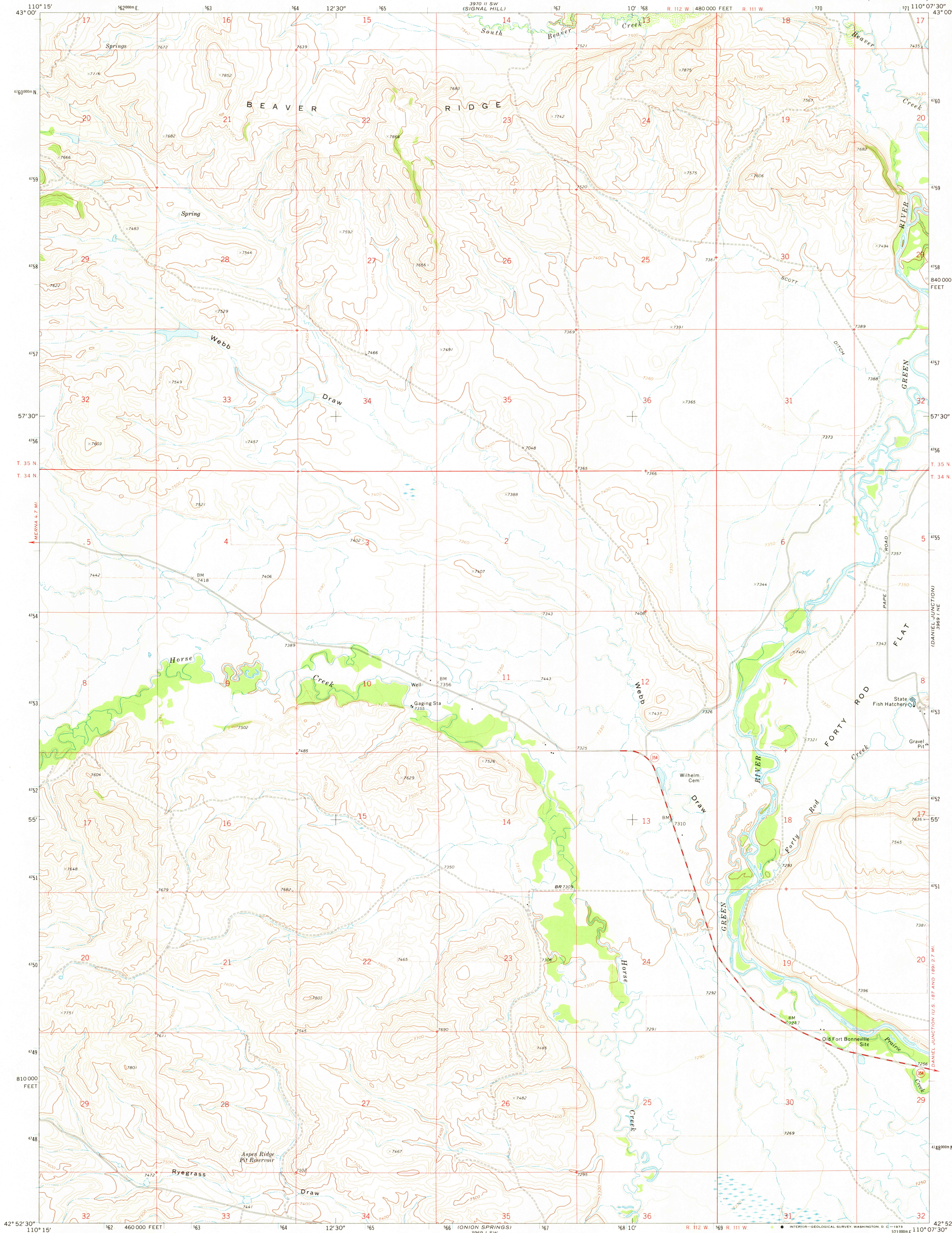
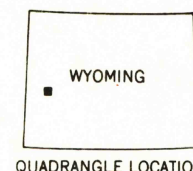
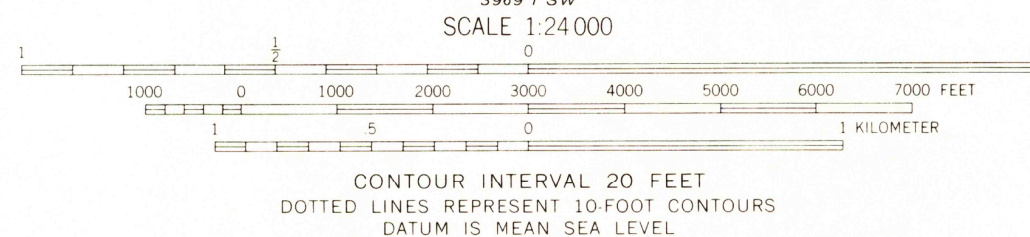
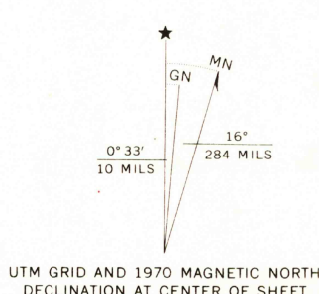


UNITED STATES
DEPARTMENT OF THE INTERIOR
GEOLOGICAL SURVEY

WEBB DRAW QUADRANGLE
WYOMING—SUBLETTE CO.
7.5 MINUTE SERIES (TOPOGRAPHIC)



Mapped, edited, and published by the Geological Survey
Control by USGS and USC&GS
Topography by photogrammetric methods from aerial
photographs taken 1969. Field checked 1970
Polyconic projection. 1927 North American datum
10,000-foot grid based on Wyoming coordinate system,
west zone
1000-meter Universal Transverse Mercator grid ticks,
zone 12, shown in blue
Fine red dashed lines indicate selected fence lines



ROAD CLASSIFICATION
Primary highway, ——— Light duty road, hard or
hard surface ——— improved surface ———
Secondary highway, ——— Unimproved road ———
hard surface ———
○ Interstate Route ○ U. S. Route ○ State Route

WEBB DRAW, WYO.
N4252 5—W11007.5/7.5
1970

AMS 3969 I NW—SERIES V874

RETURN TO:
USGS NHD HISTORICAL MAP ARCHIVES

3275