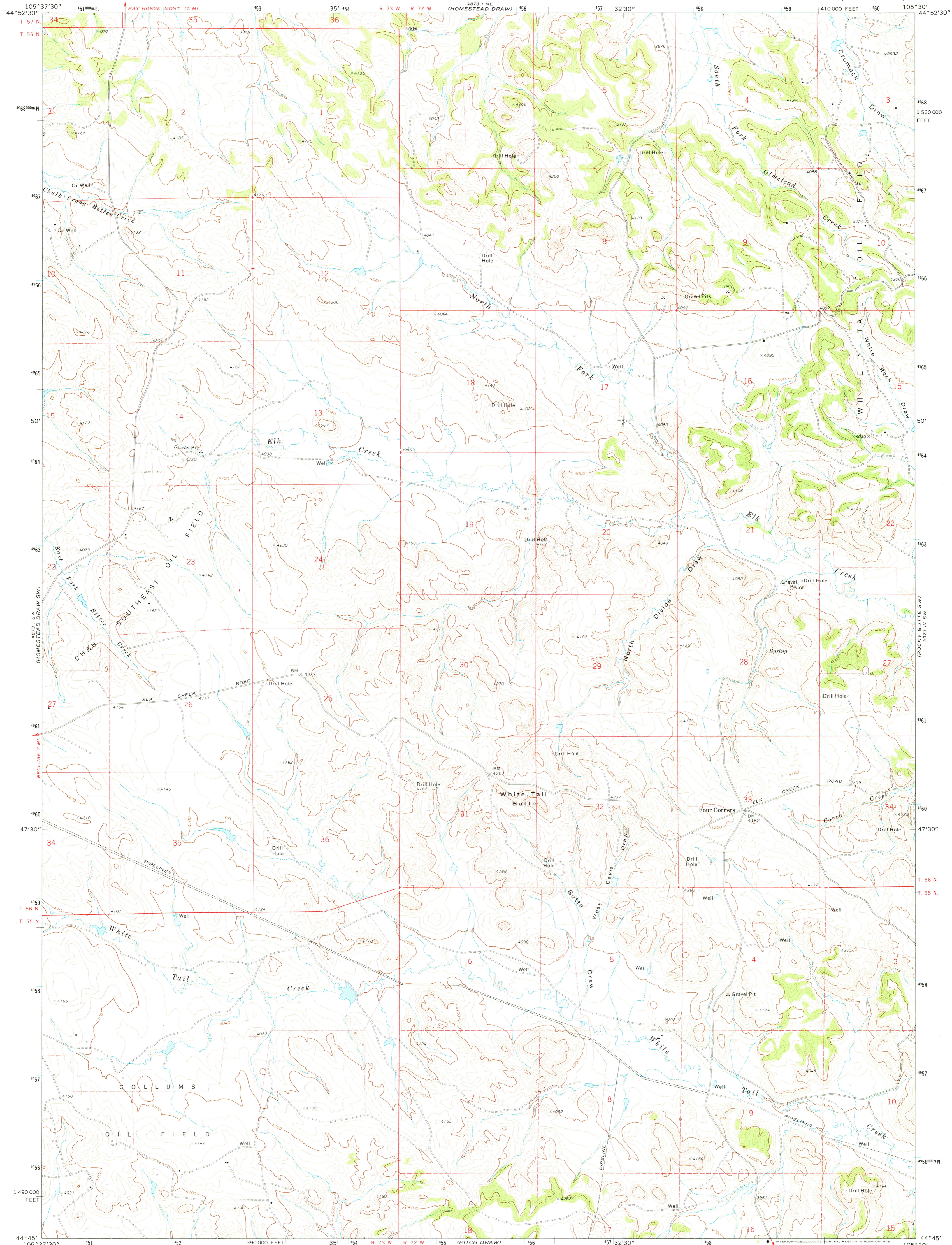
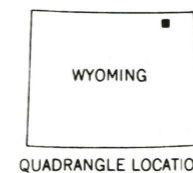
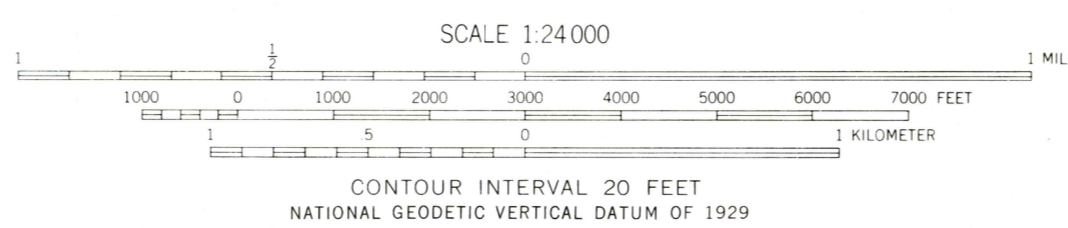
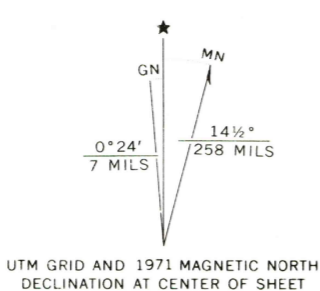


UNITED STATES
DEPARTMENT OF THE INTERIOR
GEOLOGICAL SURVEY

WHITE TAIL BUTTE QUADRANGLE
WYOMING—CAMPELL CO.
7.5 MINUTE SERIES (TOPOGRAPHIC)



Mapped, edited, and published by the Geological Survey
Control by USGS and USC&GS
Topography by photogrammetric methods from aerial photographs taken 1970. Field checked 1971
Projection and 10,000-foot grid ticks: Wyoming coordinate system, east zone (transverse Mercator)
1000-meter Universal Transverse Mercator grid ticks, zone 13, shown in blue. 1927 North American datum
Fine red dashed lines indicate selected fence lines
Land lines are omitted in areas of extensive tract surveys



ROAD CLASSIFICATION

Primary highway, hard surface	Light-duty road, hard or improved surface
Secondary highway, hard surface	Unimproved road
Interstate Route	U. S. Route
	State Route

THIS MAP COMPLIES WITH NATIONAL MAP ACCURACY STANDARDS
FOR SALE BY U.S. GEOLOGICAL SURVEY, DENVER, COLORADO 80225, OR RESTON, VIRGINIA 22092
A FOLDER DESCRIBING TOPOGRAPHIC MAPS AND SYMBOLS IS AVAILABLE ON REQUEST

USGS
Historical File
Topographic Division

WHITE TAIL BUTTE, WYO. FEB 5 1975

1971
AMS 4873 I SE—SERIES V874

RETURN TO:
USGS MHD HISTORICAL MAP ARCHIVES

3750