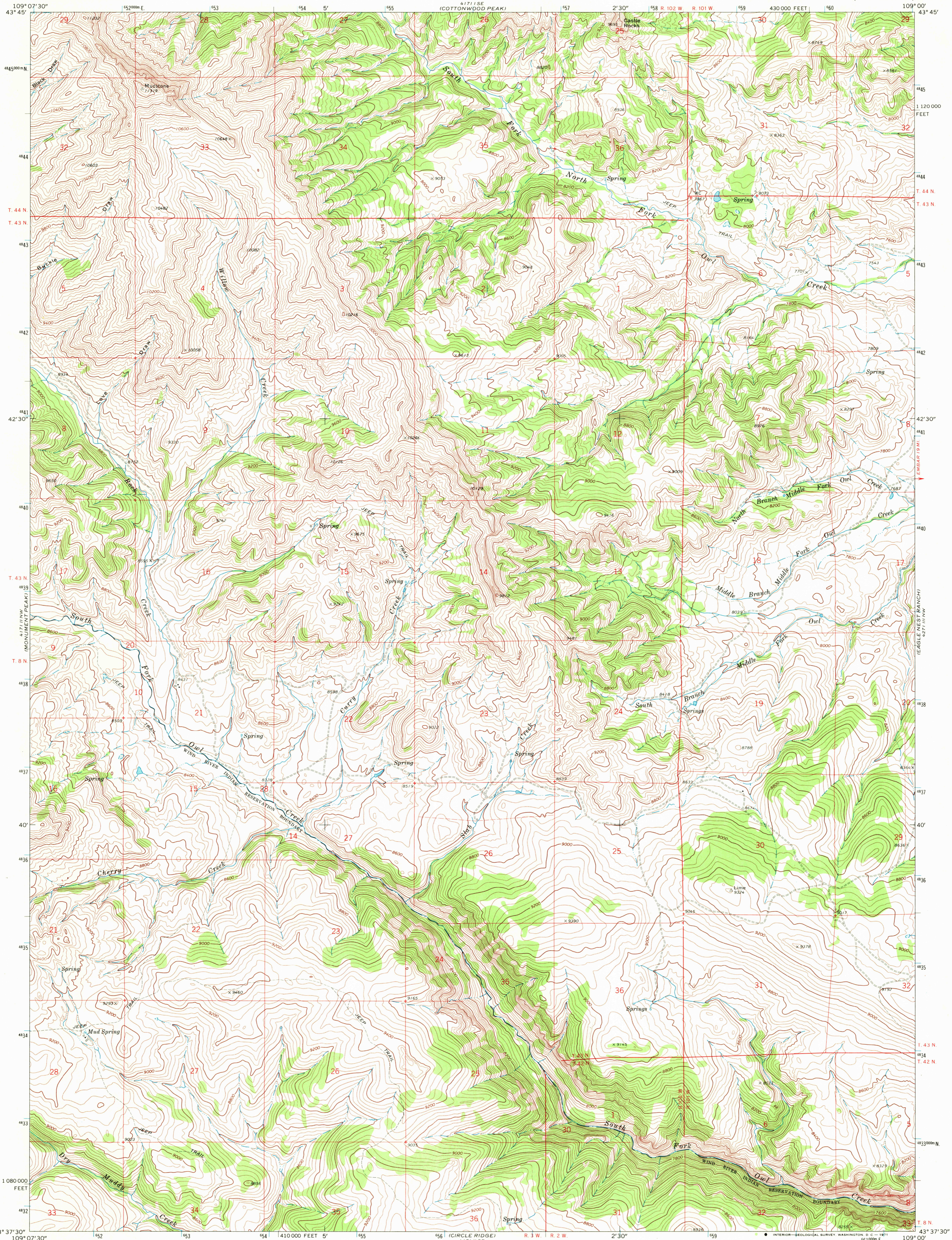


UNITED STATES
DEPARTMENT OF THE INTERIOR
GEOLOGICAL SURVEY

WILLOW CREEK QUADRANGLE
WYOMING—HOT SPRINGS CO.
7.5 MINUTE SERIES (TOPOGRAPHIC)

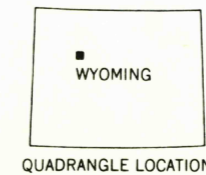
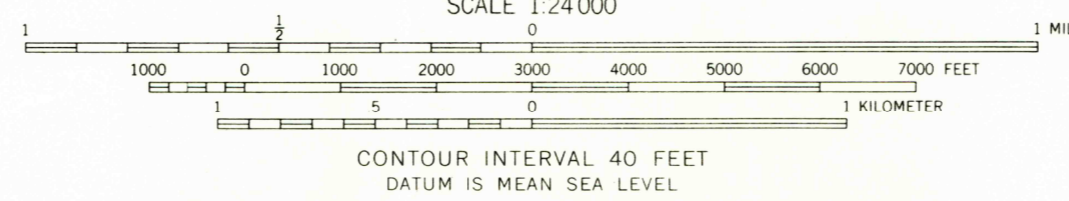
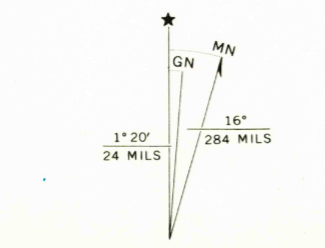


Mapped, edited, and published by the Geological Survey

Control by USGS, USC&GS, and U. S. Forest Service
Topography by photogrammetric methods from aerial
photographs taken 1966. Field checked 1967

Polyconic projection. 1927 North American datum
10,000-foot grid based on Wyoming coordinate system,
west central zone
1000-meter Universal Transverse Mercator grid ticks,
zone 12, shown in blue

Fine red dashed lines indicate selected fence lines



ROAD CLASSIFICATION
Unimproved dirt = - - - - -

WILLOW CREEK, WYO.
N4337.5—W10900.7.5

THIS MAP COMPLIES WITH NATIONAL MAP ACCURACY STANDARDS
FOR SALE BY U. S. GEOLOGICAL SURVEY, DENVER, COLORADO 80225, OR WASHINGTON, D. C. 20242
A FOLDER DESCRIBING TOPOGRAPHIC MAPS AND SYMBOLS IS AVAILABLE ON REQUEST

1967
AMS 4171 II NE—SERIES V874