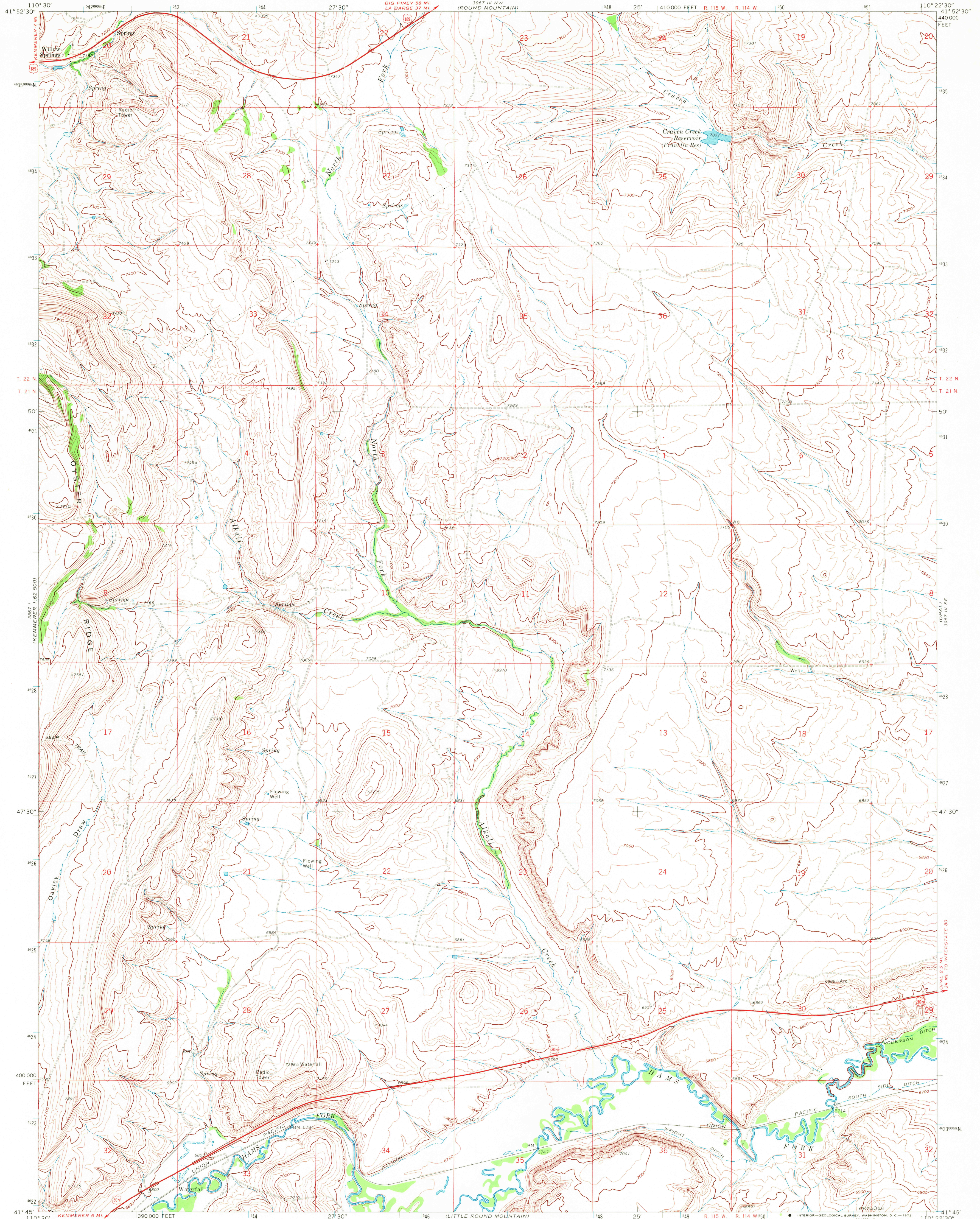
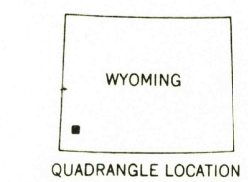
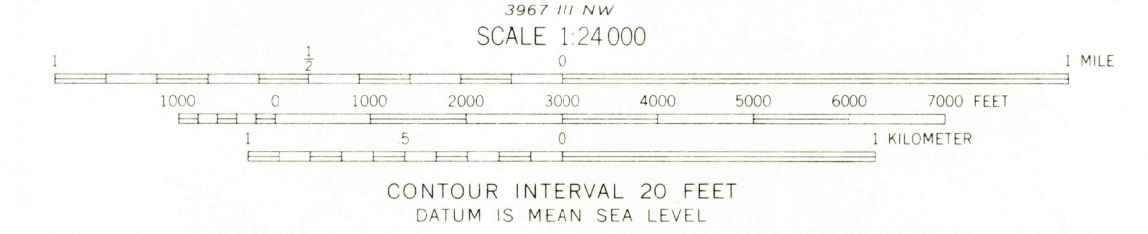
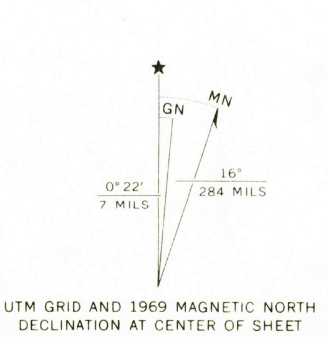


UNITED STATES
DEPARTMENT OF THE INTERIOR
GEOLOGICAL SURVEY

WILLOW SPRINGS QUADRANGLE
WYOMING—LINCOLN CO.
7.5 MINUTE SERIES (TOPOGRAPHIC)



Mapped, edited, and published by the Geological Survey
Control by USGS and USC&GS
Topography by photogrammetric methods from aerial
photographs taken 1968. Field checked 1969
Polyconic projection. 1927 North American datum
10,000-foot grid based on Wyoming coordinate system,
west zone
1000-meter Universal Transverse Mercator grid ticks,
zone 12, shown in blue
Fine red dashed lines indicate selected fence lines
Land lines are omitted in areas of extensive tract surveys



ROAD CLASSIFICATION
Primary highway, all weather, hard surface
Secondary highway, all weather, hard surface
Light duty road, all weather, improved surface
Unimproved road, fair or dry weather
Interstate Route
U. S. Route
State Route

THIS MAP COMPLIES WITH NATIONAL MAP ACCURACY STANDARDS
FOR SALE BY U. S. GEOLOGICAL SURVEY, DENVER, COLORADO 80225, OR WASHINGTON, D. C. 20242
A FOLDER DESCRIBING TOPOGRAPHIC MAPS AND SYMBOLS IS AVAILABLE ON REQUEST

WILLOW SPRINGS, WYO.
N4145-W11022.5-7.5

1969
AMS 3967 IV SW—SERIES V874

SEP 11 1972
2775

USGS
HISTORICAL FILE
TOPOGRAPHIC DIVISION

RETURN TO:
USGS MID HISTORICAL MAP ARCHIVES