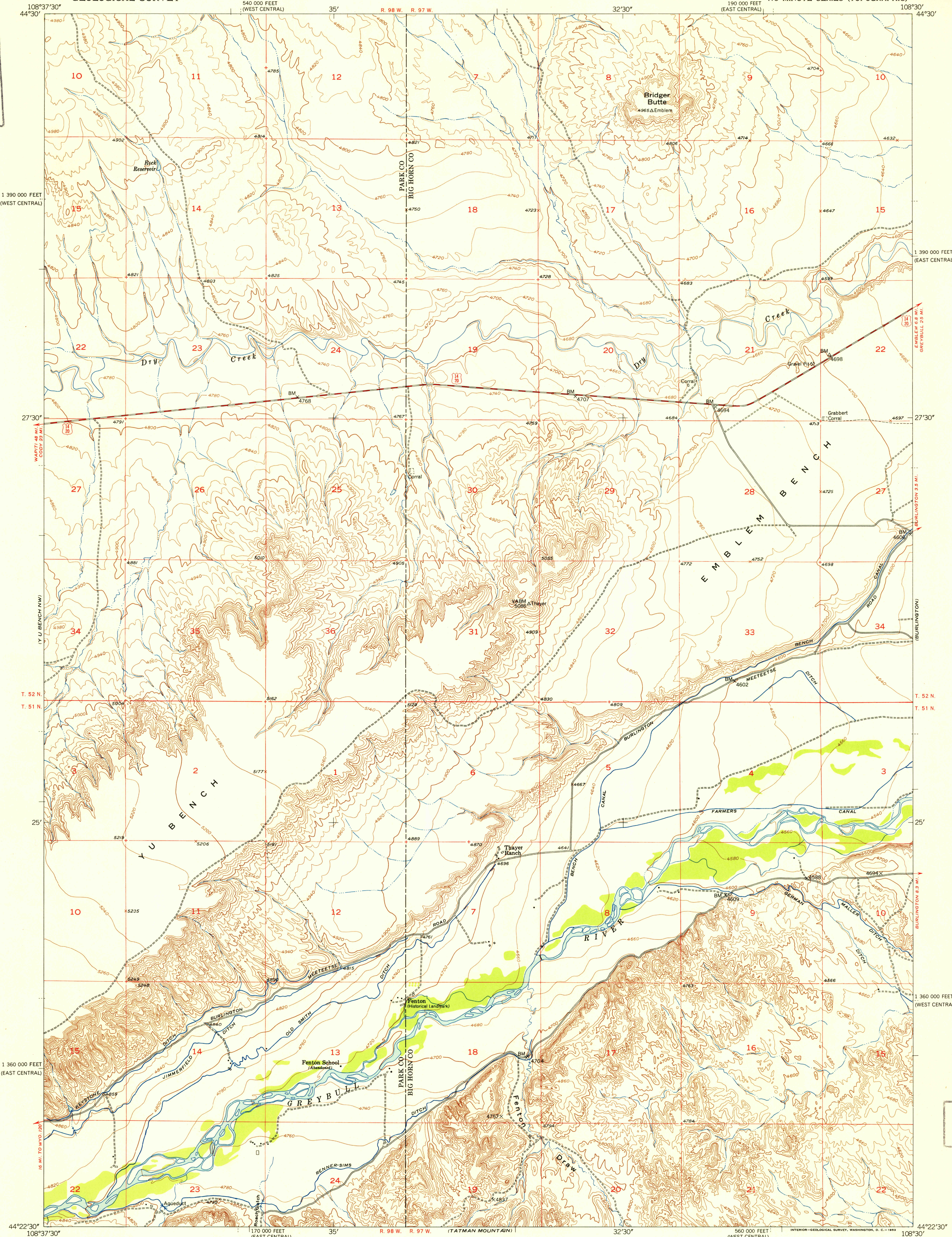
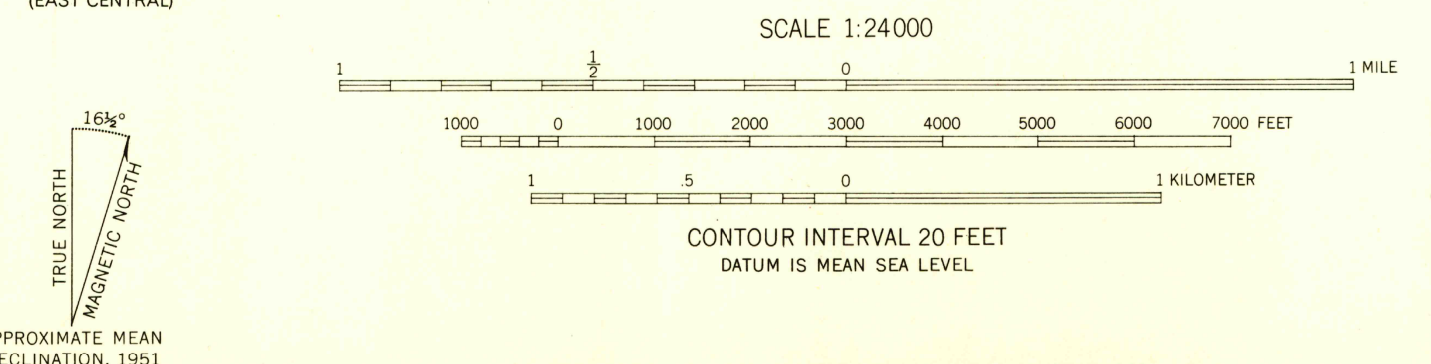


U. S. G. S.
FILE COPY
Inspection and Printing.



Mapped, edited, and published by the Geological Survey as part of the Department of the Interior program for the development of the Missouri River Basin. Control by USGS and USC&GS. Topography from aerial photographs by multiplex methods by the Geological Survey 1951 and the Tennessee Valley Authority 1950, and plane-table surveys by the Geological Survey 1951. Aerial photographs taken 1948. Polyconic projection. 1927 North American datum. 10,000-foot grid based on Wyoming coordinate system east central and west central zones.



ROAD CLASSIFICATION
Heavy-duty ——— 4 LANE 16 LANE Light-duty ———
Medium-duty ——— 4 LANE 16 LANE Unimproved dirt - - - - -
U. S. Route State Route

Y U BENCH NE, WYO.
N4422.5-W10830/7.5
1951

THIS MAP COMPLIES WITH NATIONAL MAP ACCURACY STANDARDS
FOR SALE BY U. S. GEOLOGICAL SURVEY, FEDERAL CENTER, DENVER, COLORADO OR WASHINGTON 25, D. C.
A FOLDER DESCRIBING TOPOGRAPHIC MAPS AND SYMBOLS IS AVAILABLE ON REQUEST

U. S. G. S.
FILE COPY
Inspection and Printing.

RETURN TO:
USGS AND HISTORICAL MAP ARCHIVES