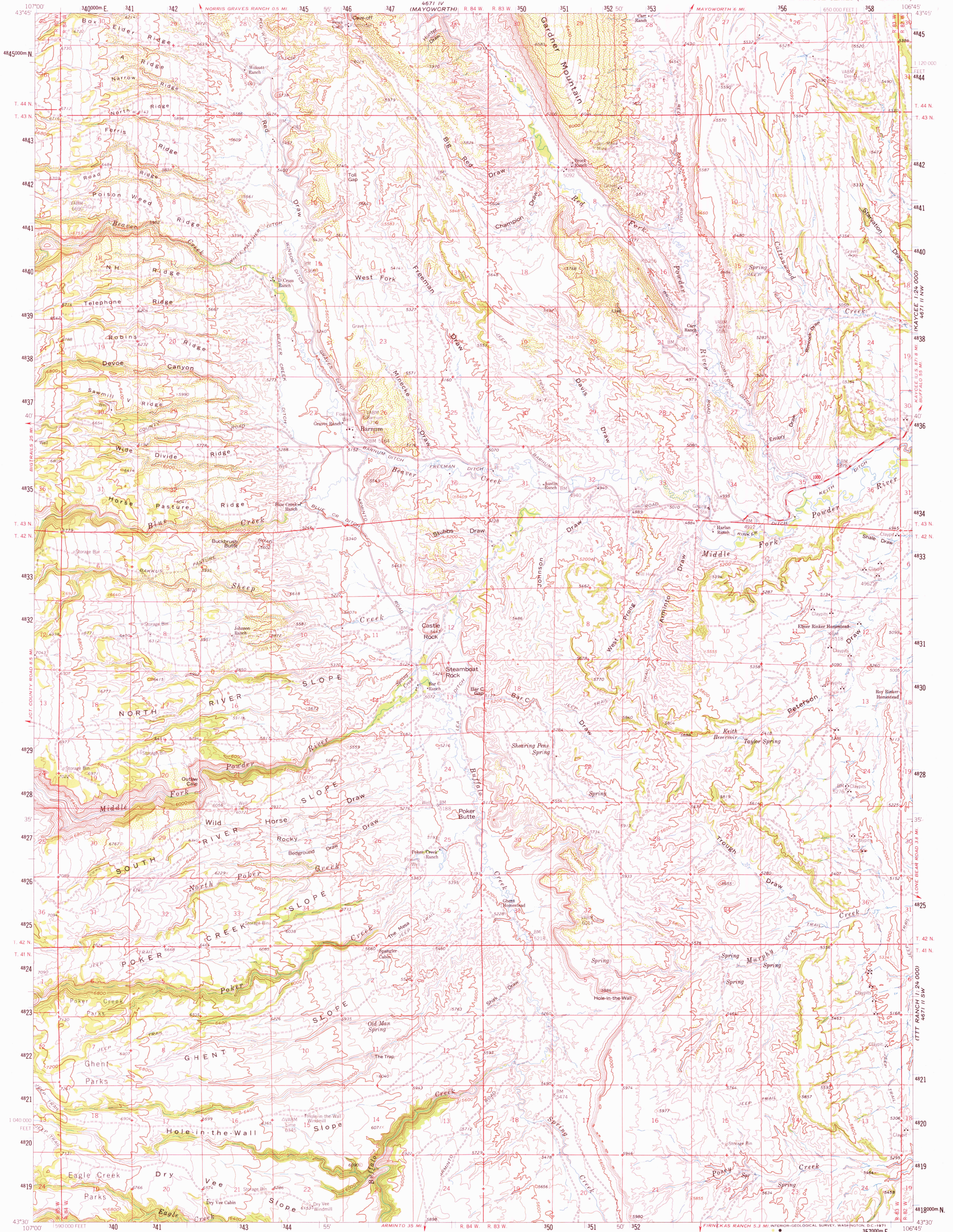
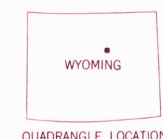
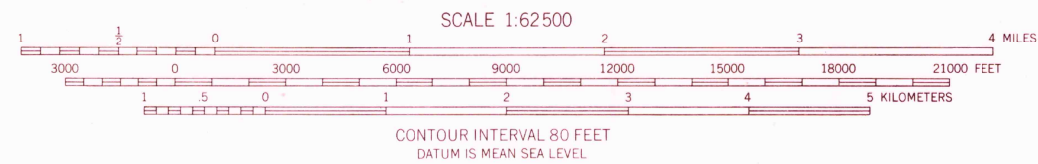
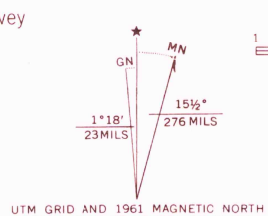


4671 IV
HIBBARD 2000



Mapped, edited, and published by the Geological Survey

Control by USGS and USC&GS
Topography by photogrammetric methods from aerial photographs taken 1958. Field checked 1961
Polyconic projection. 1927 North American datum. 10,000-foot grid based on Wyoming coordinate system, east-central zone
1000-meter Universal Transverse Mercator grid ticks, zone 13, shown in blue



THIS MAP COMPLIES WITH NATIONAL MAP ACCURACY STANDARDS
FOR SALE BY U. S. GEOLOGICAL SURVEY, DENVER, COLORADO 80225, OR WASHINGTON, D. C. 20242
A FOLDER DESCRIBING TOPOGRAPHIC MAPS AND SYMBOLS IS AVAILABLE ON REQUEST

BARNUM, WYO.
N4330-W10645/15

1961

AMS 4671 III-SERIES V774