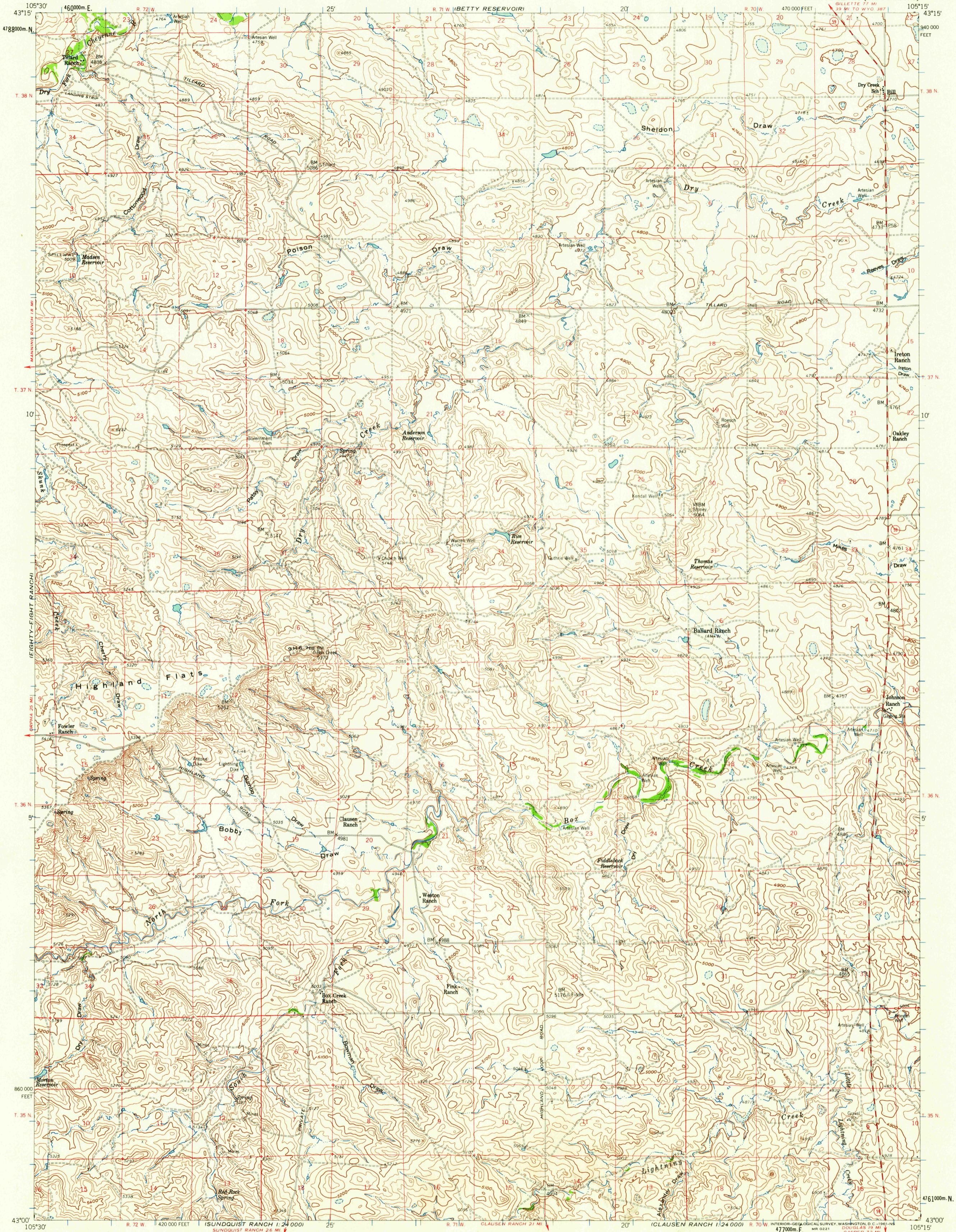


UNITED STATES
DEPARTMENT OF THE INTERIOR
GEOLOGICAL SURVEY

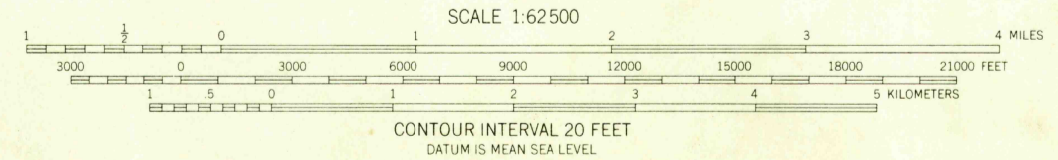
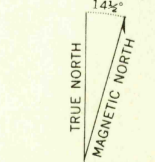
BILL QUADRANGLE
WYOMING-CONVERSE CO
15 MINUTE SERIES (TOPOGRAPHIC)



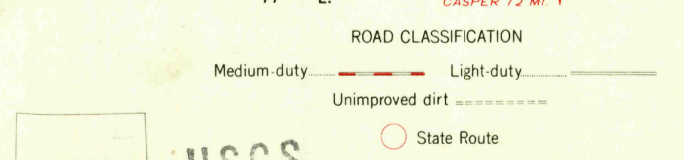
COAL DRAW

GILBERT LAKE

Mapped, edited, and published by the Geological Survey
Control by USGS and USC&GS
Topography from aerial photographs by photogrammetric methods
Aerial photographs taken 1954 Field check 1959
Polyconic projection. 1927 North American datum
10,000-foot grid based on Wyoming coordinate system,
east zone
1000-meter Universal Transverse Mercator grid ticks,
zone 13, shown in blue
Dashed land lines indicate approximate locations



CONTOUR INTERVAL 20 FEET
DATUM IS MEAN SEA LEVEL



WYOMING
U.S.G.S.
FILE COPY
TOPOGRAPHIC DIVISION

BILL, WYO.
N4300-W10515/15
1959

THIS MAP COMPLIES WITH NATIONAL MAP ACCURACY STANDARDS
FOR SALE BY U. S. GEOLOGICAL SURVEY, DENVER 25, COLORADO OR WASHINGTON 25, D. C.
A FOLDER DESCRIBING TOPOGRAPHIC MAPS AND SYMBOLS IS AVAILABLE ON REQUEST

RETURN TO:
USGS AND HISTORICAL MAP ARCHIVES

Nov - 8 1961

2085