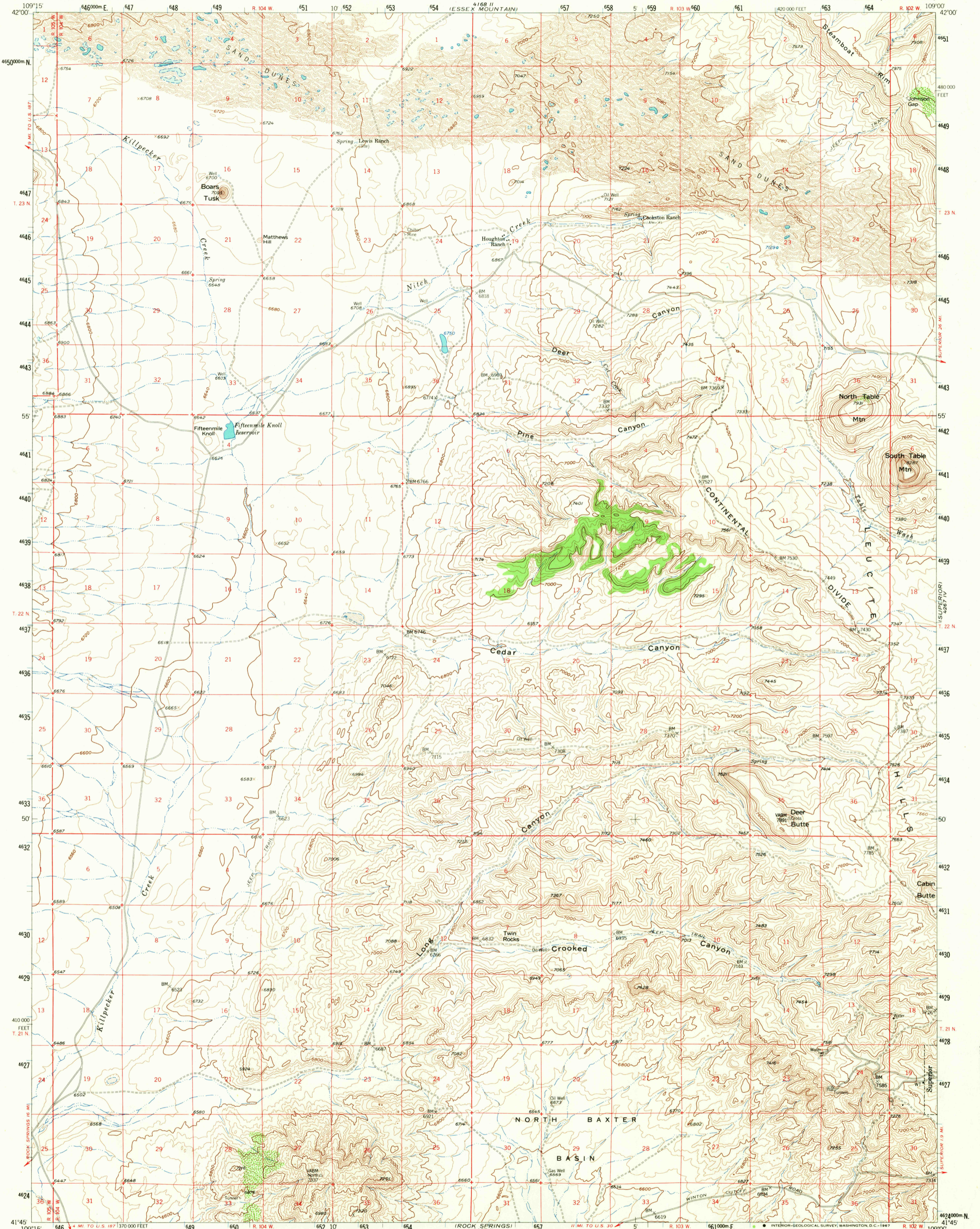
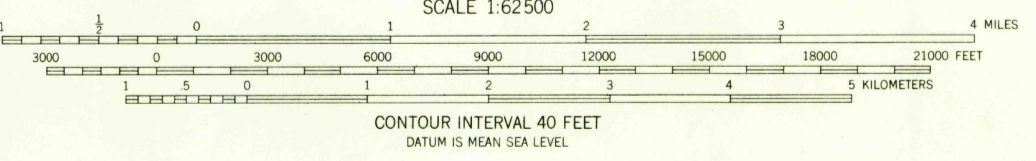
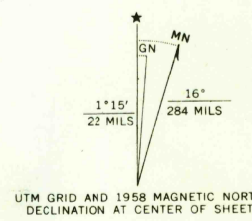


4268 III (GAP)
IF RE 1011 ER (GAP)



PILOT BUTTE 1:24,000
1:61,000 III NE

Mapped, edited, and published by the Geological Survey as part of the Department of the Interior program for the development of the Missouri River Basin Control by USGS and USC&GS
Topography from aerial photographs by photogrammetric methods
Aerial photographs taken 1956. Field check 1958
Polyconic projection. 1927 North American datum
10,000-foot grid based on Wyoming coordinate system, west central zone
1000-meter Universal Transverse Mercator grid ticks, zone 12, shown in blue



ROAD CLASSIFICATION
Light-duty ——— Unimproved dirt - - - - -

MAY 15 1967

U.S.G.S.
TOPOGRAPHIC DIVISION
FILE COPY

BOARS TUSK, WYO.
N4145-W10900/15
1958
AMS 4167 I-SERIES V774

THIS MAP COMPLIES WITH NATIONAL MAP ACCURACY STANDARDS
FOR SALE BY U.S. GEOLOGICAL SURVEY, DENVER, COLORADO 80225 OR WASHINGTON, D.C. 20242
A FOLDER DESCRIBING TOPOGRAPHIC MAPS AND SYMBOLS IS AVAILABLE ON REQUEST

RETURN TO:
USGS AND HISTORICAL MAP ARCHIVES

3245