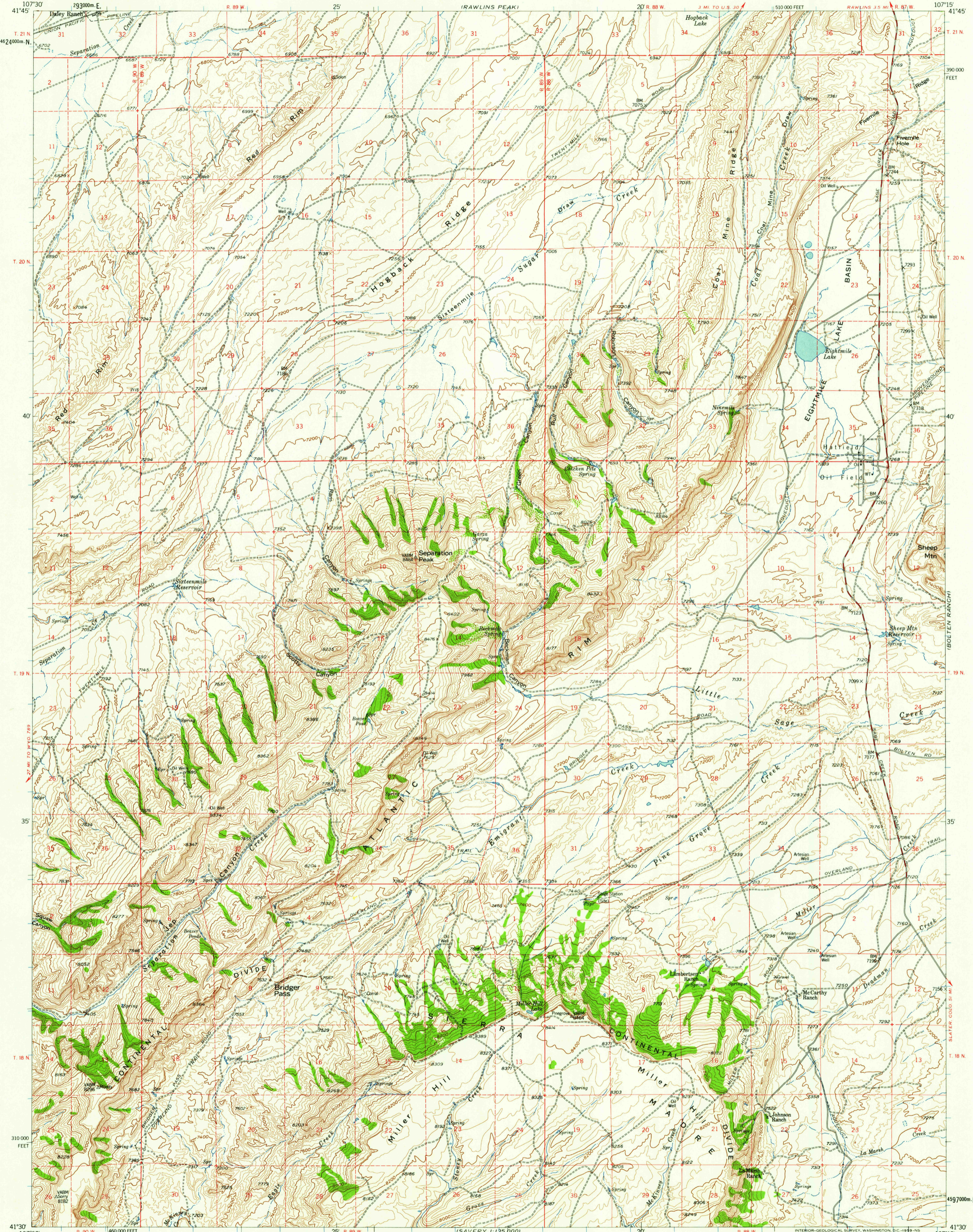
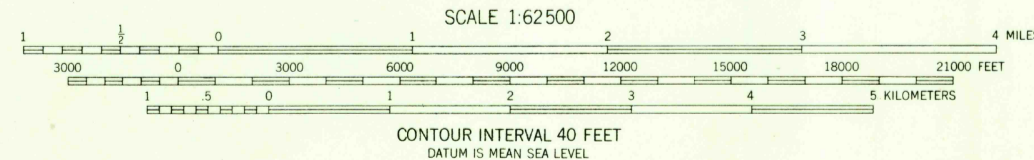
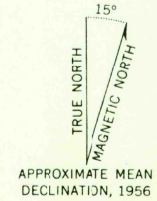


RAWLINS
1:24,000

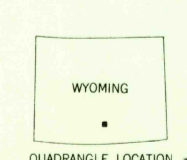


Mapped, edited, and published by the Geological Survey
Control by USGS and USC&GS
Topography from aerial photographs by photogrammetric methods
Aerial photographs taken 1954. Field check 1956
Polyconic projection. 1927 North American datum
10,000-foot grid based on Wyoming coordinate system,
east central zone
1000-meter Universal Transverse Mercator grid ticks,
zone 13, shown in blue
Dashed land lines indicate approximate locations



ROAD CLASSIFICATION

Medium-duty	Light-duty
Unimproved dirt	



FOR SALE BY U.S. GEOLOGICAL SURVEY, DENVER 2, COLORADO OR WASHINGTON 25, D.C.
A FOLDER DESCRIBING TOPOGRAPHIC MAPS AND SYMBOLS IS AVAILABLE ON REQUEST

U.S.G.S. BRIDGER PASS, WYO.
FILE COPY N4130-W10715/15
TOPOGRAPHIC DIVISION 1956

RETURN TO:
USGS AND HISTORICAL MAP ARCHIVES

FEB 19 1959

FEB 19 1959