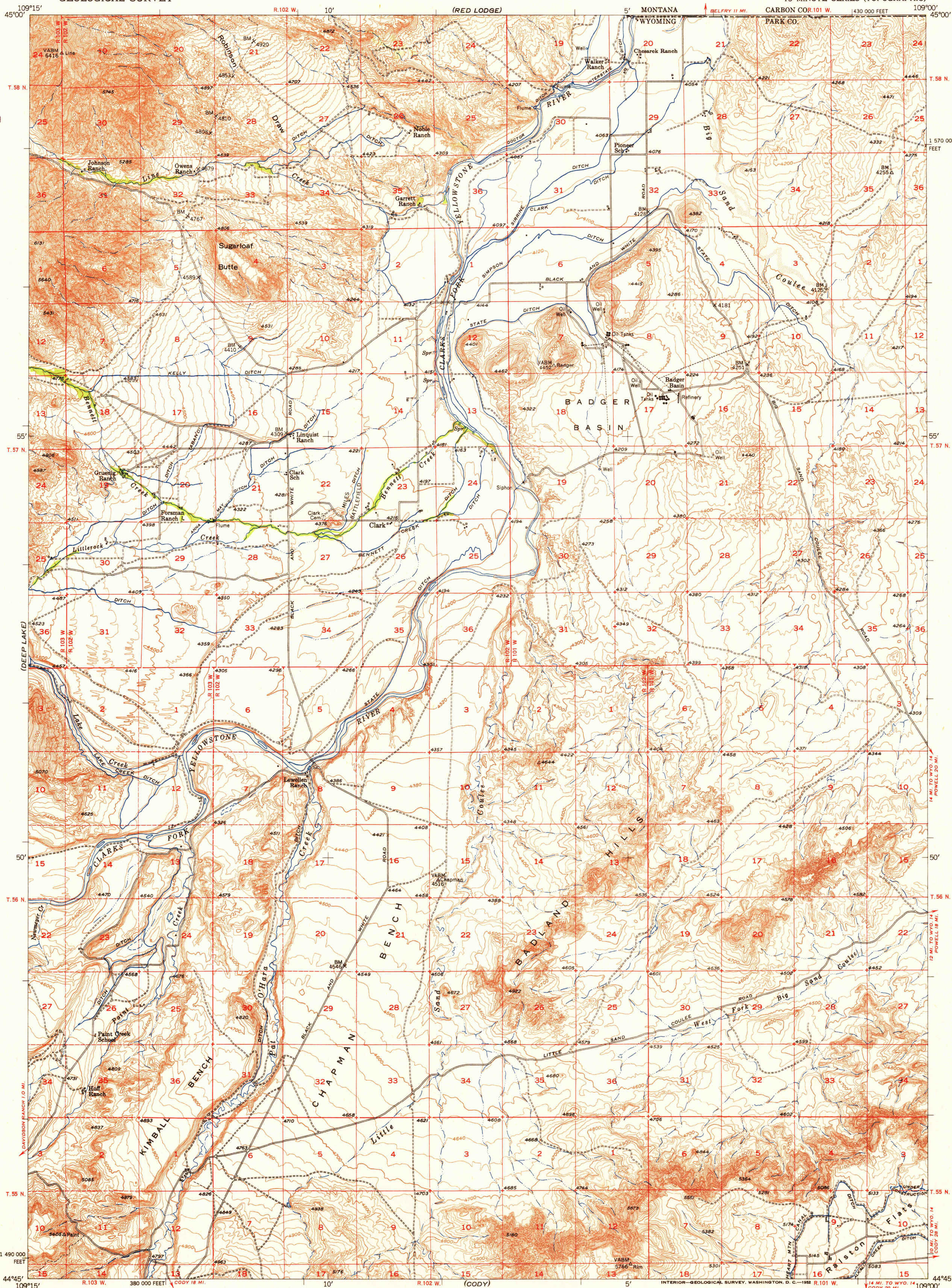
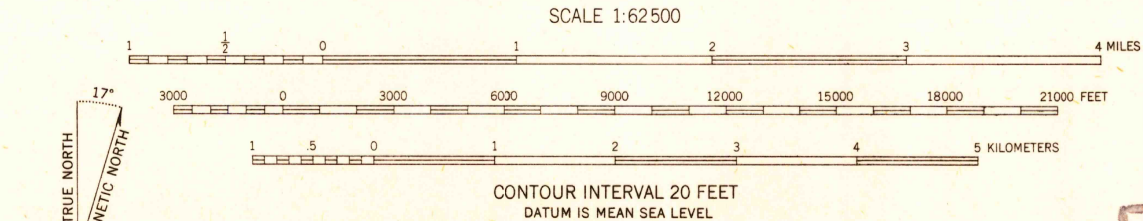


FILE COPY  
Impress and Binding



RETURN TO:  
USGS AND HISTORICAL MAP ARCHIVES

Stereo compilation by Fairchild Aerial Surveys, Inc. and the Geological Survey for the Bureau of Reclamation Field examination and publication by the Geological Survey as part of the Department of the Interior program for the development of the Missouri River Basin  
Control by USGS and USC&GS  
Topography from aerial photographs by stereoplanigraph methods, 1949. Aerial photographs taken July 1944 and August 1948. Field check 1950  
Polyconic projection. 1927 North American datum 10,000-foot grid based on Wyoming coordinate system, west central zone  
Dashed land lines indicate approximate location



ROAD CLASSIFICATION  
Heavy-duty 4 LANE 6 LANE Light-duty  
Medium-duty 2 LANE 6 LANE Unimproved dirt  
U. S. Route State Route

FILE COPY  
Impress and Binding

CLARK, WYO.-MONT.  
N4445-W10900/15  
1950

THIS MAP COMPLIES WITH NATIONAL MAP ACCURACY STANDARDS  
FOR SALE BY U.S. GEOLOGICAL SURVEY, FEDERAL CENTER, DENVER, COLORADO OR WASHINGTON 25, D. C.  
A FOLDER DESCRIBING TOPOGRAPHIC MAPS AND SYMBOLS IS AVAILABLE ON REQUEST

NOV 21 1952

2070