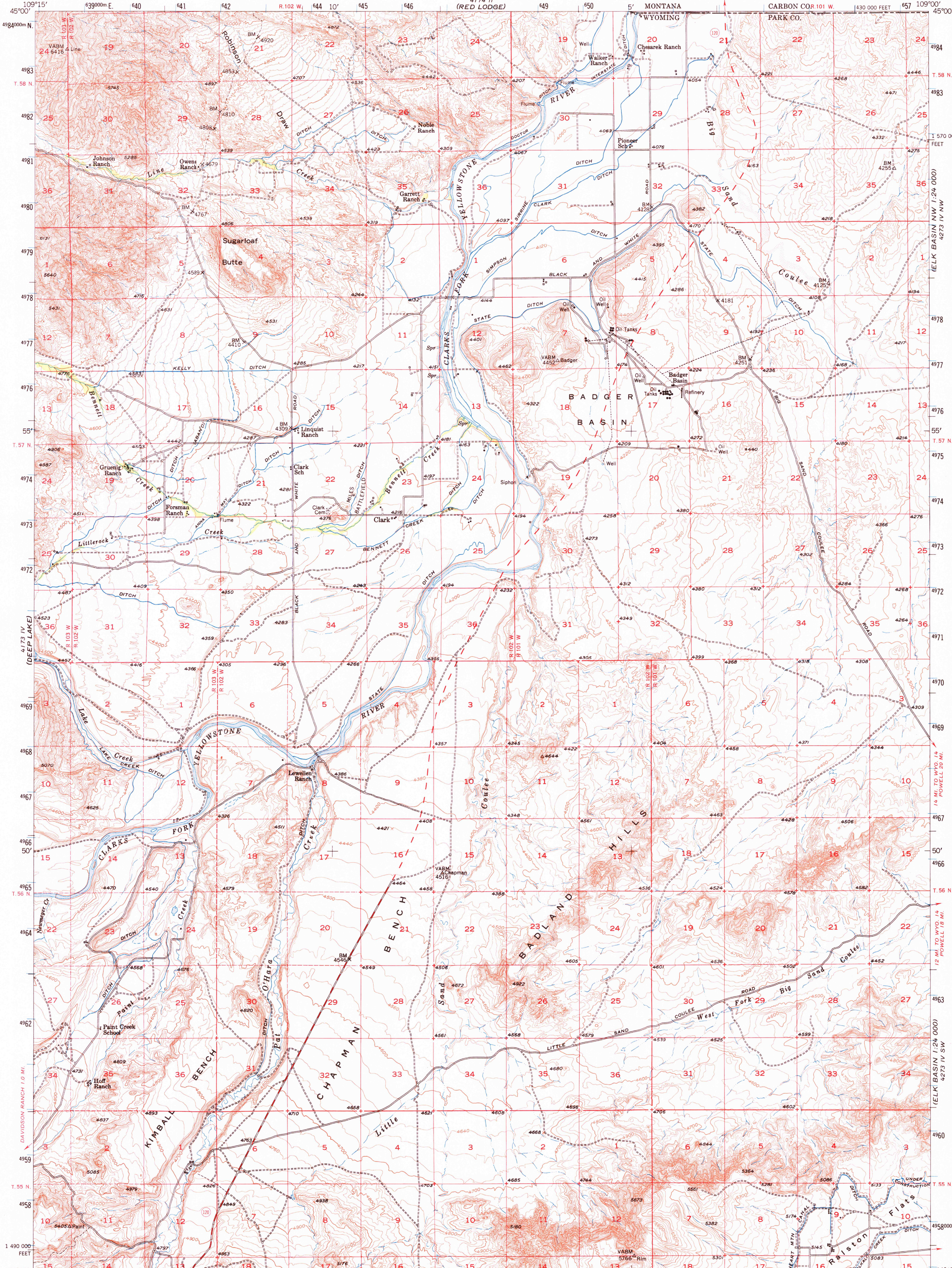


UNITED STATES  
DEPARTMENT OF THE INTERIOR  
GEOLOGICAL SURVEY

CLARK QUADRANGLE  
WYOMING-MONTANA

15 MINUTE SERIES (TOPOGRAPHIC)

CARBON CO. 101 W. 430 000 FEET 657 109°00'



Stereo compilation by Fairchild Aerial Surveys, Inc. and the Geological Survey for the Bureau of Reclamation Field examination and publication by the Geological Survey as part of the Department of the Interior program for the development of the Missouri River Basin

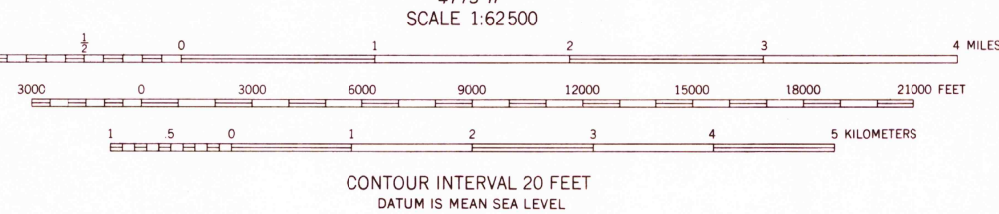
Control by USGS and USC&GS

Topography from aerial photographs by stereoplanigraph methods, 1949. Aerial photographs taken July 1944 and August 1948. Field check 1950

Polyconic projection. 1927 North American datum 10,000-foot grid based on Wyoming coordinate system, west central zone

Dashed land lines indicate approximate location 1000-meter Universal Transverse Mercator grid ticks, zone 12, shown in blue

UTM GRID AND 1950 MAGNETIC NORTH DECLINATION AT CENTER OF SHEET

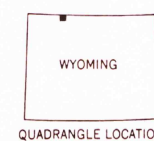


ROAD CLASSIFICATION

Medium-duty ——— Light-duty ———

Unimproved dirt ———

State Route ———



CLARK, WYO.-MONT.  
N4445-W10900/15

1950

AMS 4173 I—SERIES V774

THIS MAP COMPLIES WITH NATIONAL MAP ACCURACY STANDARDS  
FOR SALE BY U. S. GEOLOGICAL SURVEY, DENVER, COLORADO 80225 OR WASHINGTON, D. C. 20242  
A FOLDER DESCRIBING TOPOGRAPHIC MAPS AND SYMBOLS IS AVAILABLE ON REQUEST