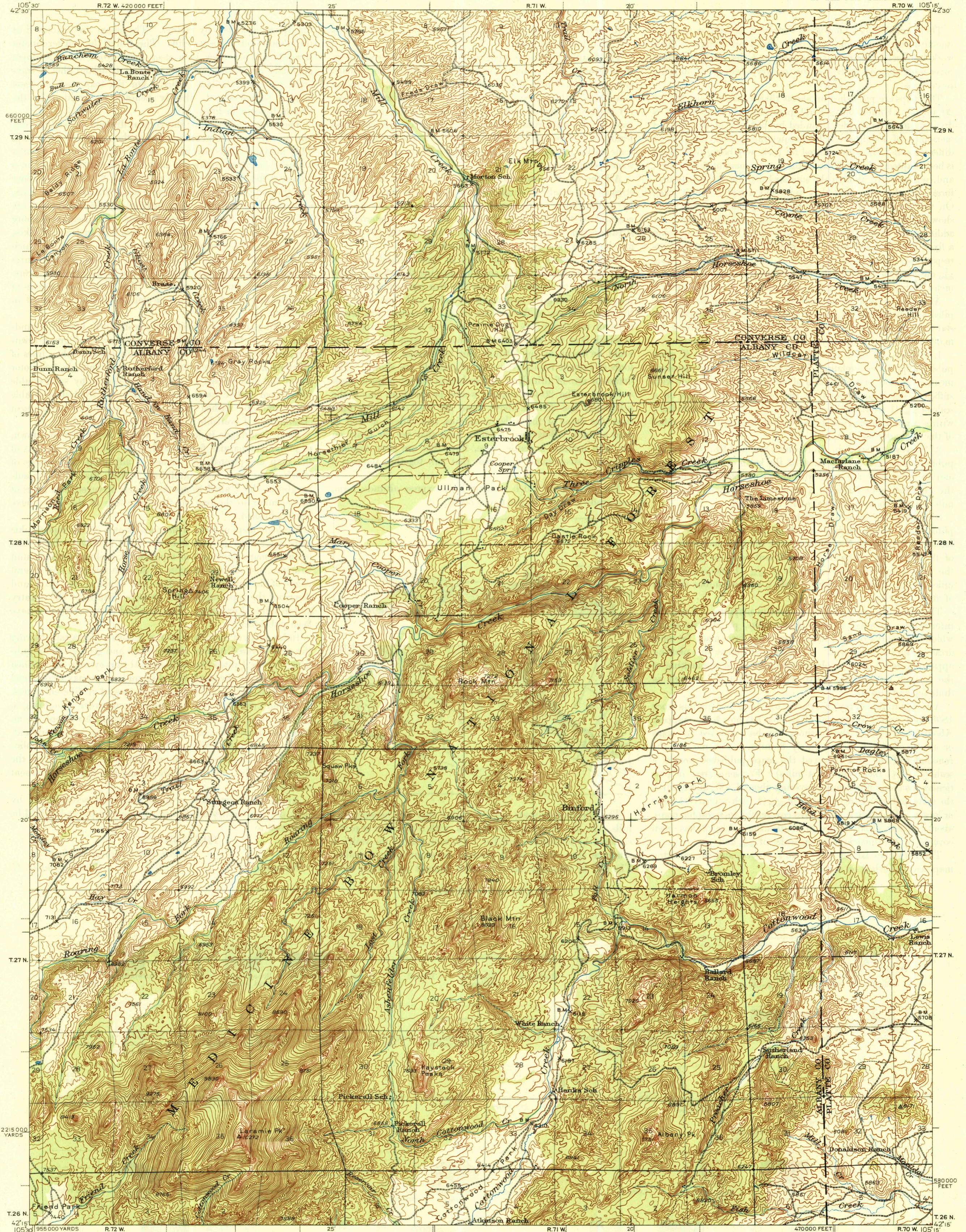


U. S. G. S.  
FILE COPY  
Inspection and Editing.

UNITED STATES  
DEPARTMENT OF THE INTERIOR  
GEOLOGICAL SURVEY

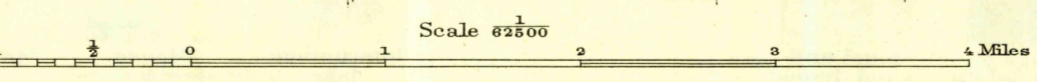
WYOMING  
ESTERBROOK QUADRANGLE  
15-MINUTE SERIES



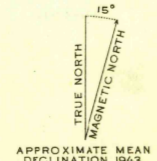
105°30'  
42°30'  
66000 FEET  
T.29 N.  
25  
20  
15  
10  
5  
0  
T.28 N.  
25  
20  
15  
10  
5  
0  
T.27 N.  
20  
15  
10  
5  
0  
T.26 N.  
42°25'  
105°30'

R.72 W. 420000 FEET  
R.71 W.  
20'  
R.70 W. 105°15'  
T.29 N.  
25  
20  
15  
10  
5  
0  
T.28 N.  
25  
20  
15  
10  
5  
0  
T.27 N.  
20  
15  
10  
5  
0  
T.26 N.  
42°25'  
105°15'

Mapped by the Geological Survey  
1943



Polyconic projection, 1927 North American datum  
5000 yard grid based on U.S. zone system, E  
10000 foot grid based on Wyoming (East)  
rectangular coordinate system



Contour interval 50 feet  
Datum is near sea level

U. S. G. S.  
FILE COPY  
Inspection and Editing.

ESTERBROOK WYO.  
Edition of 1945  
N 4215-W 10515/15

RETURN TO:  
USGS MAP HISTORICAL MAP ARCHIVES