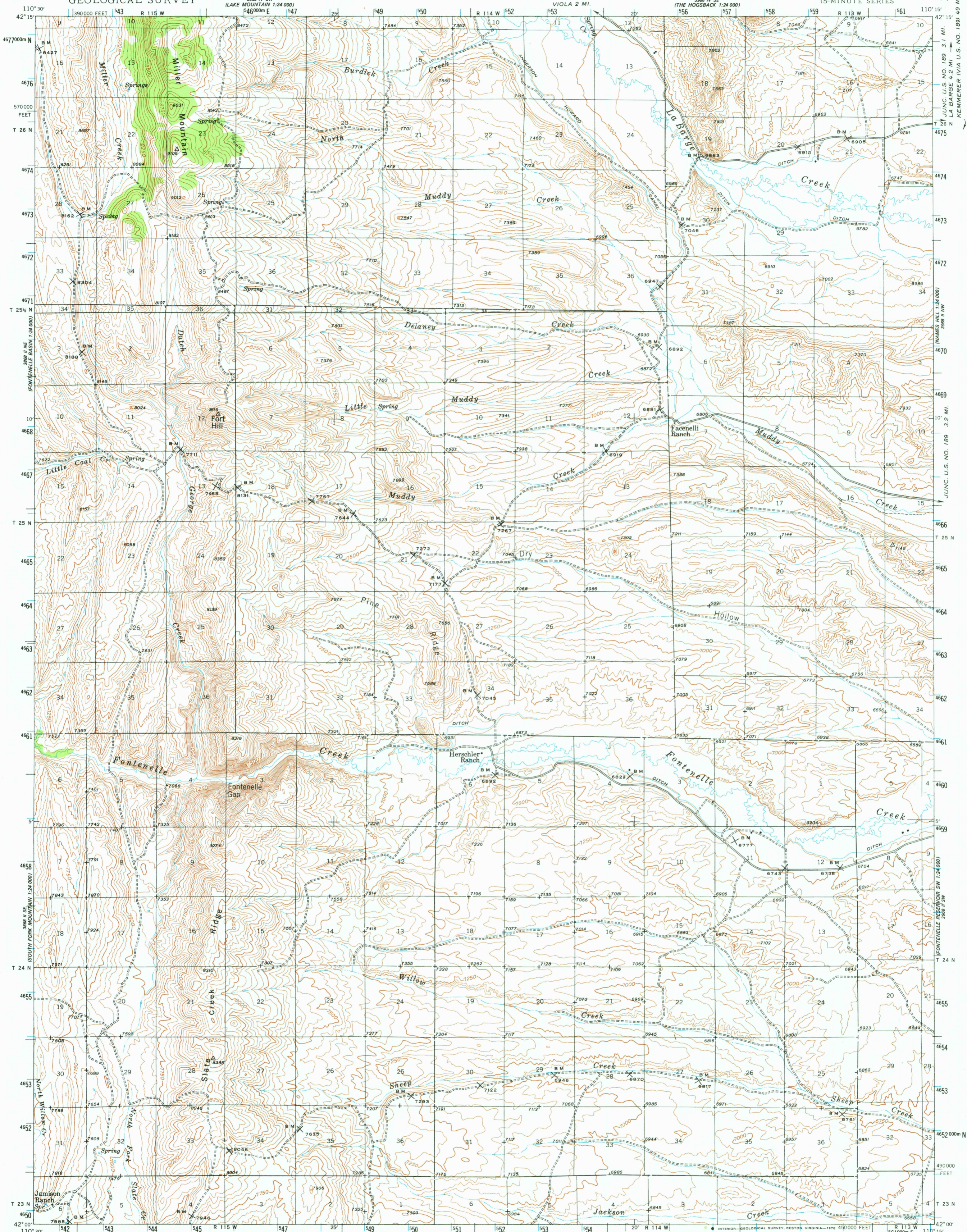


UNITED STATES
DEPARTMENT OF THE INTERIOR
GEOLOGICAL SURVEY

WYOMING
(LINCOLN COUNTY)
FORT HILL QUADRANGLE
15-MINUTE SERIES



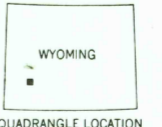
Mapped by the Geological Survey
1945

SCALE 1:62500

ROAD CLASSIFICATION
Light-duty —————
Unimproved dirt - - - - -



Contour interval 50 feet
NATIONAL GEODETIC VERTICAL DATUM OF 1929



FORT HILL, WYO.
N4200-W11015/15

NOV 27 1978

FOR SALE BY U. S. GEOLOGICAL SURVEY, DENVER, COLORADO 80225, OR RESTON, VIRGINIA 22092
A FOLDER DESCRIBING TOPOGRAPHIC MAPS AND SYMBOLS IS AVAILABLE ON REQUEST

USGS
Historical File
Topographic Division

1945
AMS 3968 III—SERIES V774

RETURN TO: USGS AND HISTORICAL MAP ARCHIVES

100