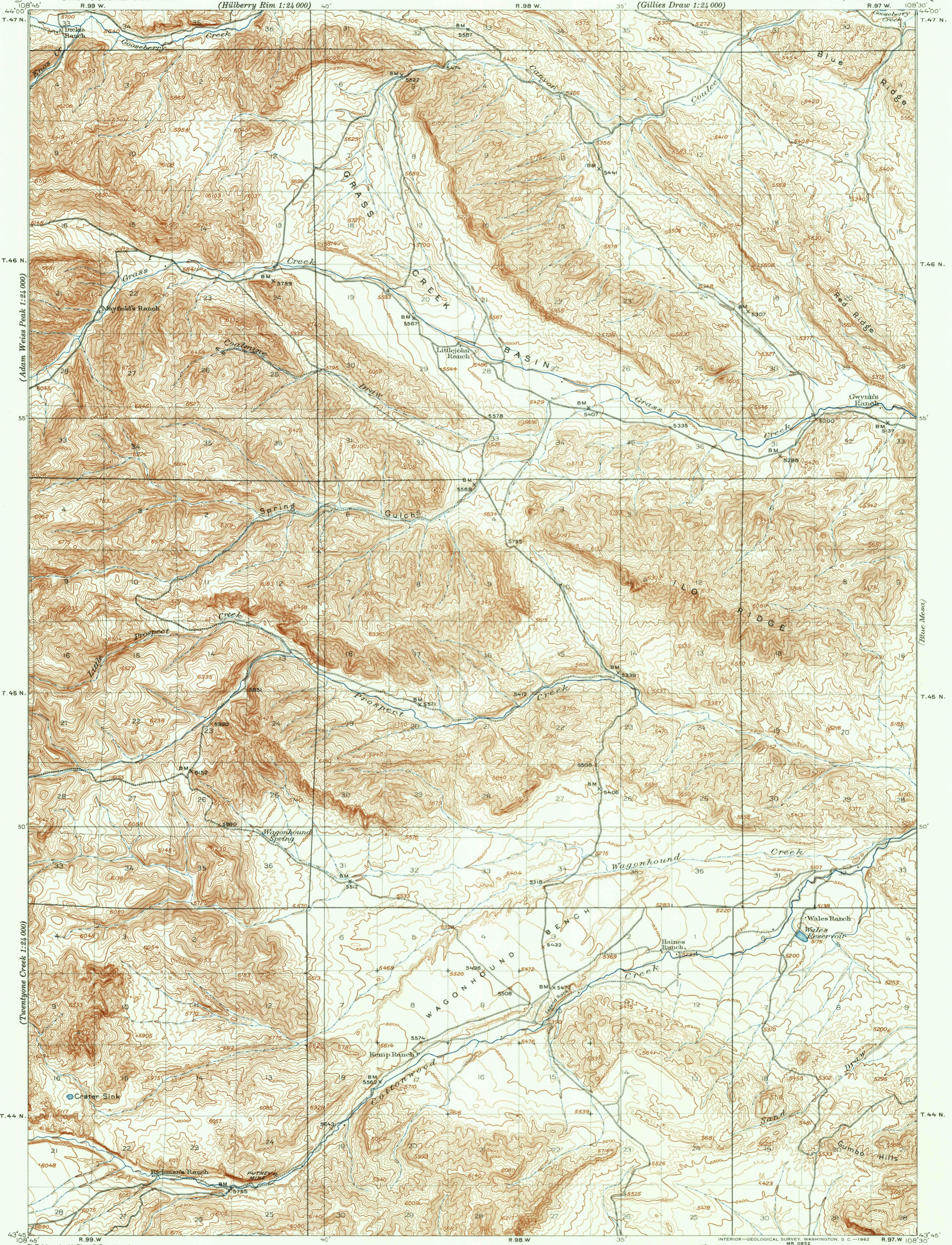
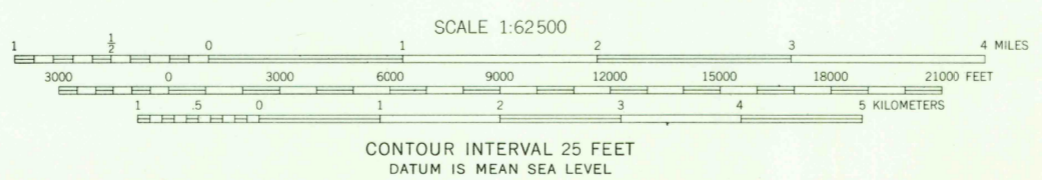


UNITED STATES  
DEPARTMENT OF THE INTERIOR  
GEOLOGICAL SURVEY

WYOMING  
(HOT SPRINGS COUNTY)  
GRASS CREEK BASIN QUADRANGLE



R. B. Marshall, Chief Geographer,  
Sledge Tatum, Geographer in charge,  
Topography by C. C. Gardner, R. R. Monbeck,  
and C. R. Fisher.  
Control by R. B. Robertson, H. M. Huntington,  
R. R. Monbeck, and C. R. Fisher.  
Surveyed in 1912-13.



INTERIOR—GEOLOGICAL SURVEY, WASHINGTON, D. C.—1962  
MR. 0852  
POLYCONIC PROJECTION. To place on 1927 North American datum  
move projection lines 300 feet east and 380 feet north.

FOR SALE BY U. S. GEOLOGICAL SURVEY, DENVER 25, COLORADO OR WASHINGTON 25, D. C.  
A FOLDER DESCRIBING TOPOGRAPHIC MAPS AND SYMBOLS IS AVAILABLE ON REQUEST

USGS  
FILE COPY  
TOPOGRAPHIC DIVISION  
GRASS CREEK BASIN, WYO.  
N 4345—W 10830/15  
1913

RETURN TO:  
USGS MAP HISTORICAL MAP ARCHIVES

MR - 51562  
1570-6