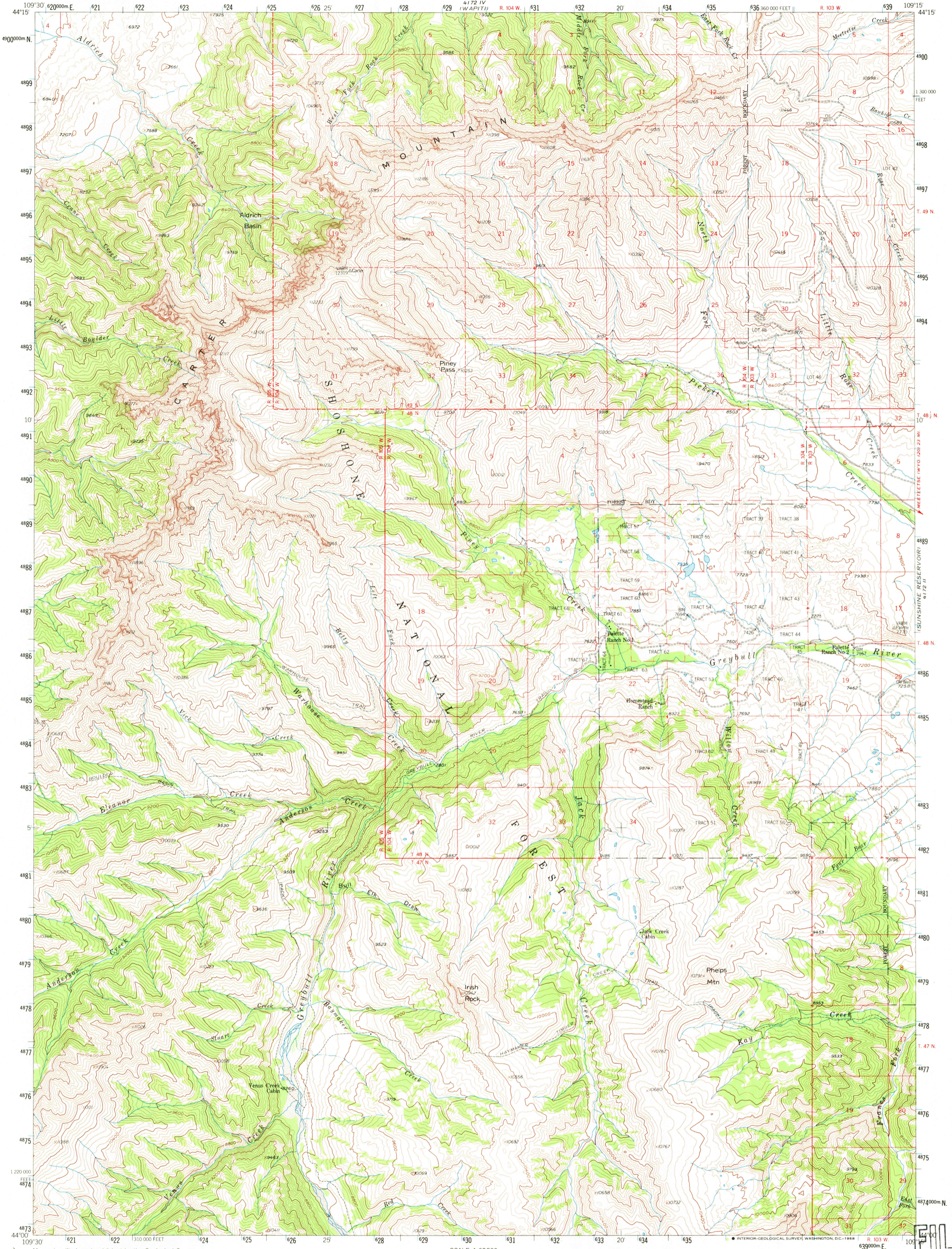
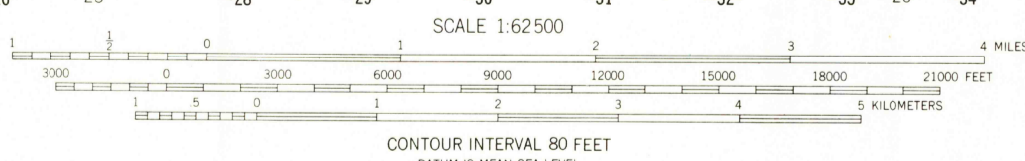
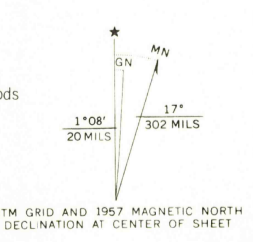


4172 I
(DEVILS TOOTH)

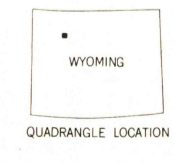


4071 I NE
(EMERALD LAKE)

Mapped, edited, and published by the Geological Survey as part of the Department of the Interior program for the development of the Missouri River Basin
Control by USGS and USC&GS
Topography from aerial photographs by photogrammetric methods
Aerial photographs taken 1953, field check 1957
Polyconic projection, 1927 North American datum
10,000-foot grid based on Wyoming coordinate system, west central zone
1000-meter Universal Transverse Mercator grid ticks, zone 12, shown in blue
Dashed land lines indicate approximate locations
Land lines unsurveyed in T. 47 and 48 N., R. 105 W. and in parts of T. 49 N., R. 104 and 105 W. Land lines omitted in T. 47 N., R. 104 W. because of insufficient data



THIS MAP COMPLIES WITH NATIONAL MAP ACCURACY STANDARDS
FOR SALE BY U. S. GEOLOGICAL SURVEY, DENVER, COLORADO 80225 OR WASHINGTON, D. C. 20242
A FOLDER DESCRIBING TOPOGRAPHIC MAPS AND SYMBOLS IS AVAILABLE ON REQUEST



ROAD CLASSIFICATION
Light-duty ————— Unimproved dirt - - - - -

U.S.G.S.
FILE COPY
TOPOGRAPHIC DIVISION

IRISH ROCK, WYO.
N4400-W10915/15
1957
AMS 4172 III-SERIES V774

3065
NOV 22 1968
NOV 22 1968