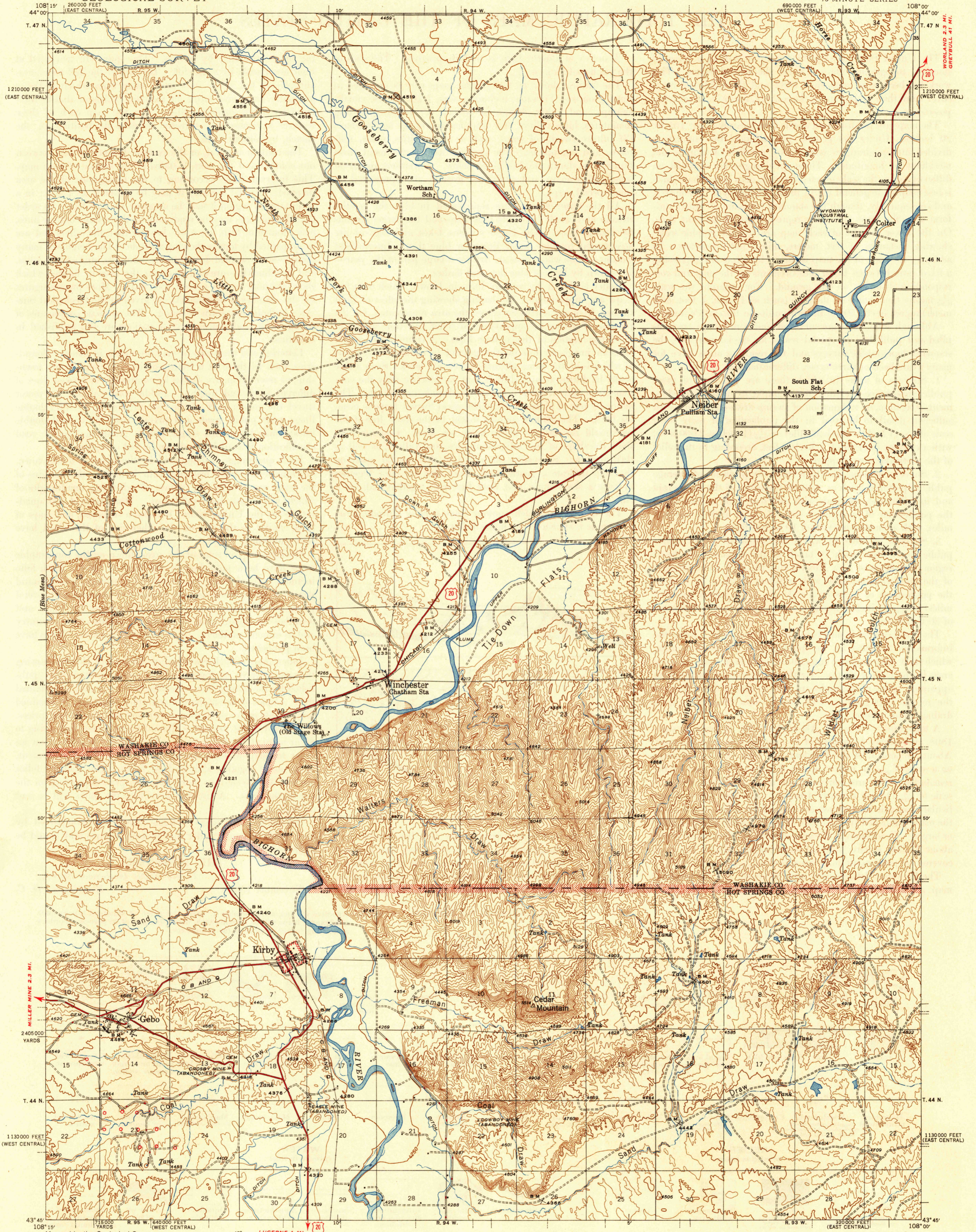


U.S.G.S.
FILE COPY
Inspection and Editing

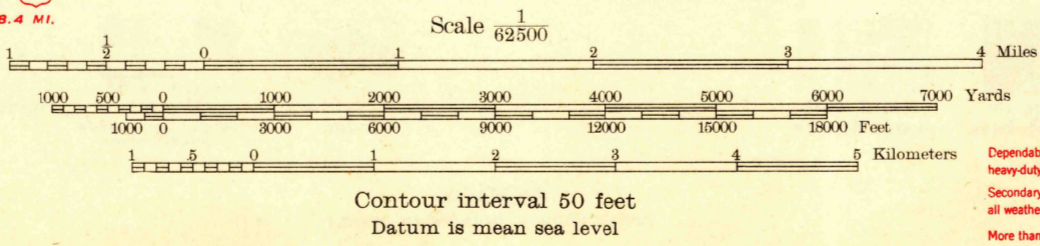
UNITED STATES
DEPARTMENT OF THE INTERIOR
GEOLOGICAL SURVEY

WYOMING
KIRBY QUADRANGLE
15-MINUTE SERIES



Mapped by the Geological Survey
1944-1945

TRUE NORTH
MAGNETIC NORTH
APPROXIMATE MEAN
DECLINATION, 1948
LUCERNE 1 MI.
THERMOPOLIS 4.4 MI.
CASPER 142 MI.



Polyconic projection. 1927 North American Datum
5000 yard grid based on U. S. zone system, E
10000 foot grid based on Wyoming (East Central)
and Wyoming (West Central) rectangular coordinate
systems

ROAD CLASSIFICATION
1946
Dependable hard-surface heavy-duty road
Secondary hard-surface all-weather road
Dry weather roads
Loose-surface graded
Unsurfaced, graded
Dirt road
U. S. Route 20
State Route 20
More than two lanes indicated along road with tick at point of change
OIL WELLS

KIRBY, WYO.
Edition of 1946
N4345-W10800/15

RETURN TO:
USGS AND HISTORICAL MAP ARCHIVES

U.S.G.S.
FILE COPY