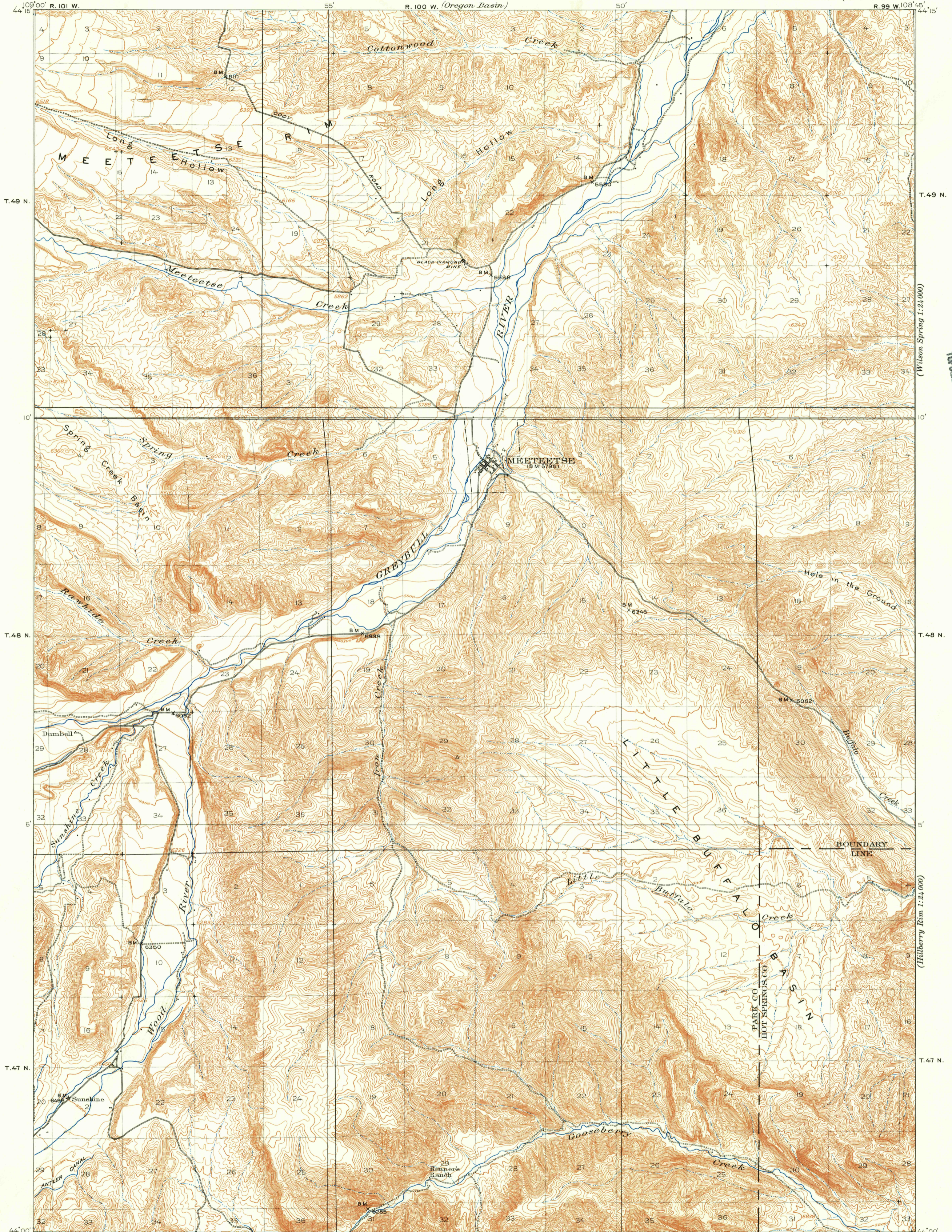
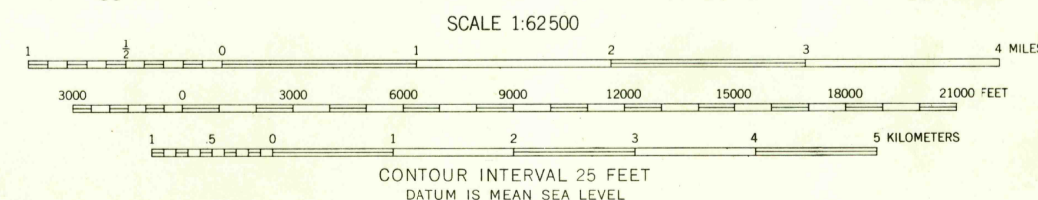
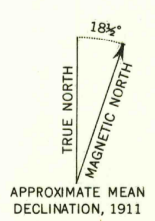


(Sheets Flat)
1:24,000



U.S.G.S.
FILE COPY
TOPOGRAPHIC DIVISION

R.B. Marshall, Chief Geographer.
Sledge Tatum, Geographer in charge.
Topography by C.C. Gardner and C.C. Holder.
Control by R.B. Robertson and H.M. Huntington.
Surveyed in 1911.



Polyconic projection. To place on 1927 North American datum
move projection lines 90 feet north

U.S.G.S.
FILE COPY
TOPOGRAPHIC DIVISION

WYO.
MEETEETSE
N 4400-W 10845/15

1911

FOR SALE BY U.S. GEOLOGICAL SURVEY, DENVER 2, COLORADO OR WASHINGTON 25, D. C.
A FOLDER DESCRIBING TOPOGRAPHIC MAPS AND SYMBOLS IS AVAILABLE ON REQUEST

RETURN TO:
USGS NHD HISTORICAL MAP ARCHIVES

NOV 12 1957

1955