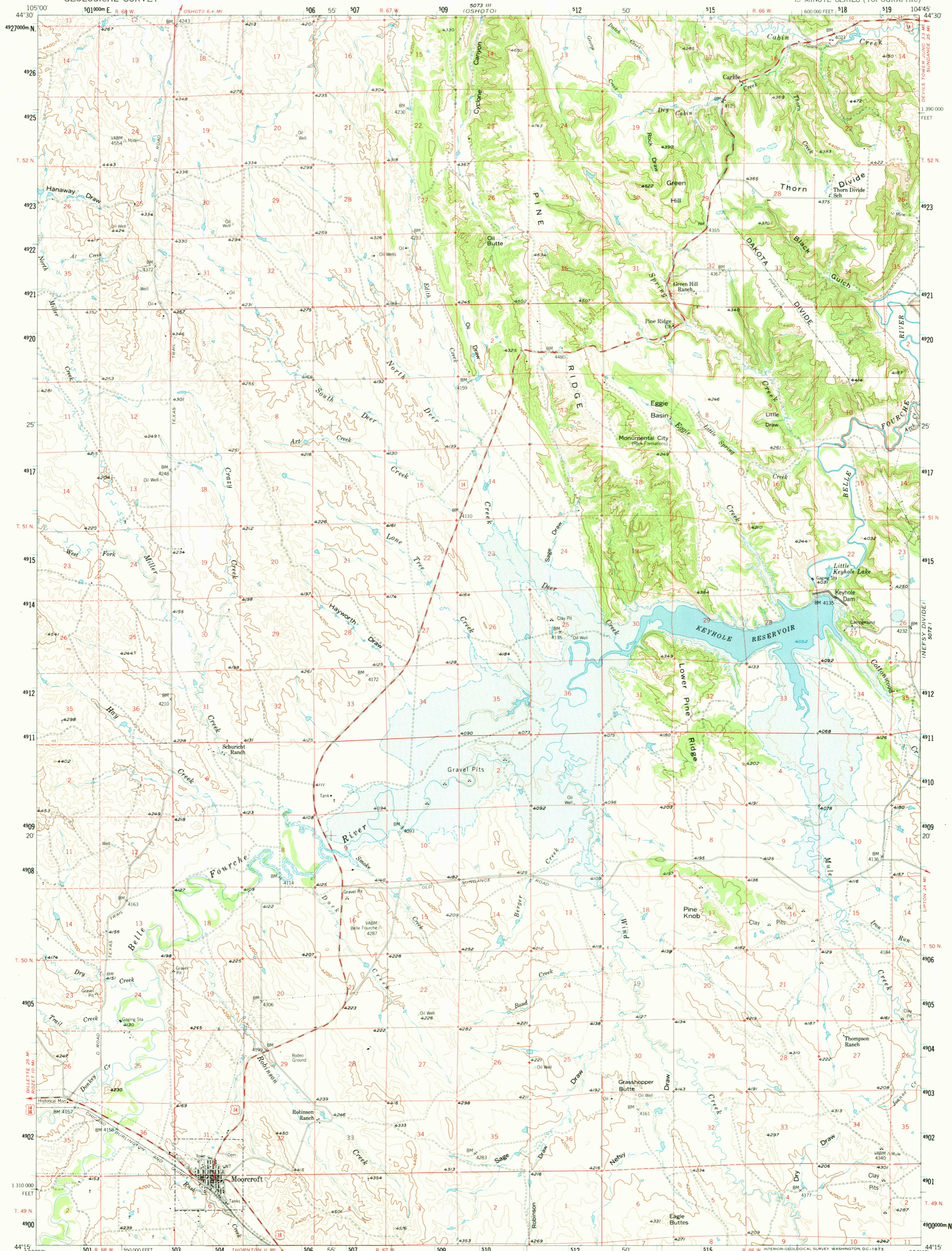
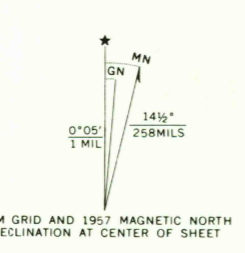


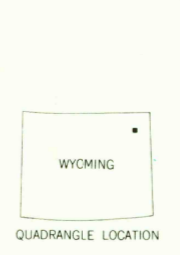
5073 II
(OSHTO)



Mapped, edited, and published by the Geological Survey
Control by USGS and USC&GS
Topography from 1:24,000-scale map of Carleton 7.5 minute
quadrangle, surveyed 1954; and from aerial photographs by
photogrammetric methods. Aerial photographs taken
1953-1954. Field check 1957
Polyconic projection. 1927 North American datum
10,000-foot grid based on Wyoming coordinate system,
east zone
1000-meter Universal Transverse Mercator grid ticks,
zone 13, shown in blue
Dashed land lines indicate approximate locations
Area covered by dashed light blue pattern
is subject to controlled inundation
(Maximum pool elevation 4099)



THIS MAP COMPLIES WITH NATIONAL MAP ACCURACY STANDARDS
FOR SALE BY U. S. GEOLOGICAL SURVEY, DENVER, COLORADO 80225 OR WASHINGTON, D. C. 20242
A FOLDER DESCRIBING TOPOGRAPHIC MAPS AND SYMBOLS IS AVAILABLE ON REQUEST



ROAD CLASSIFICATION

Medium-duty ——— Light-duty ———

Unimproved dirt - - - - -

U.S. Route

JUL 24 1973

MOORCROFT, WYO.
N4415-W10445/15

1957

AMS 5072 IV—SERIES V774

RETURN TO:
USGS AND HISTORICAL MAP ARCHIVES