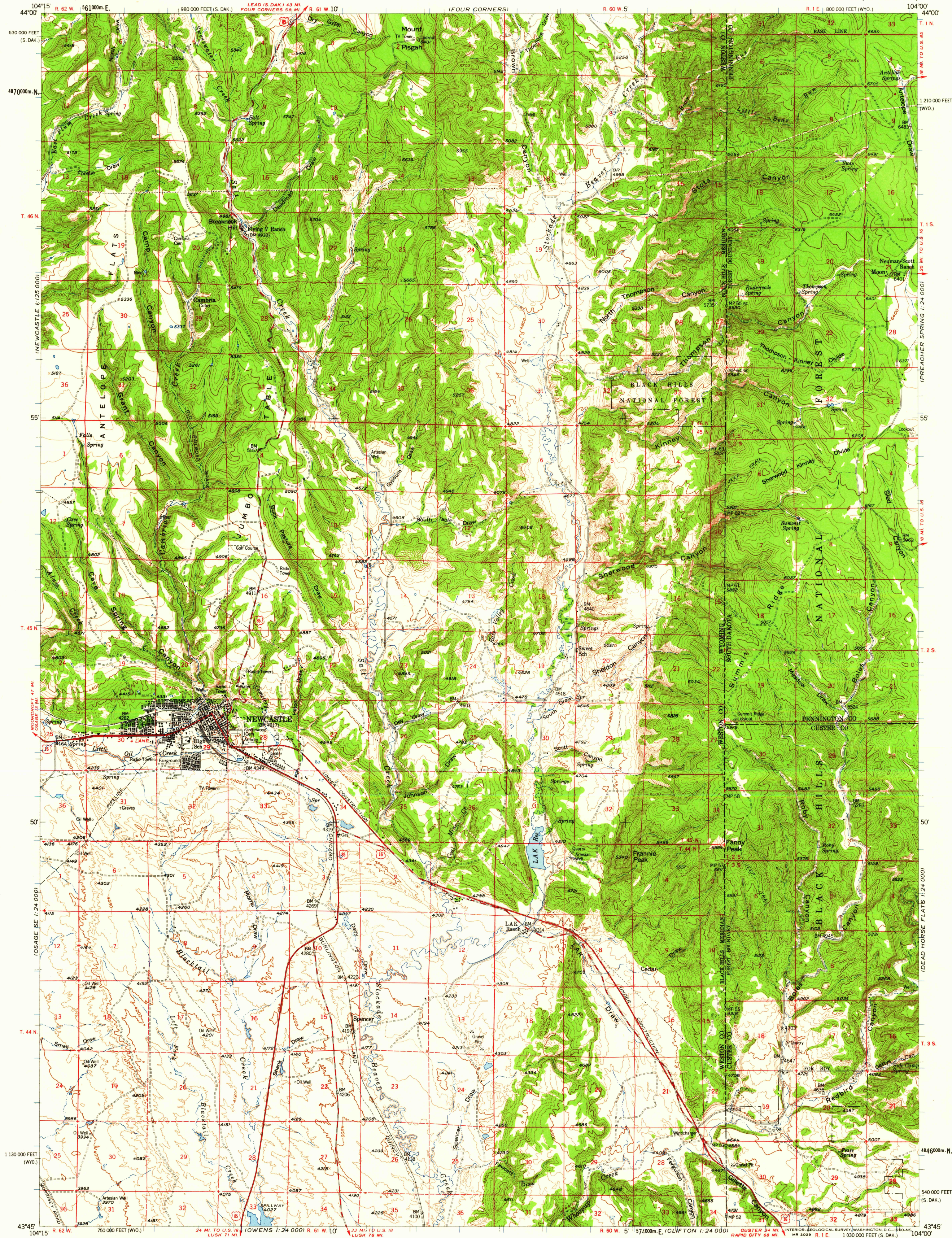
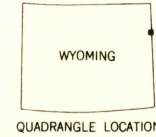
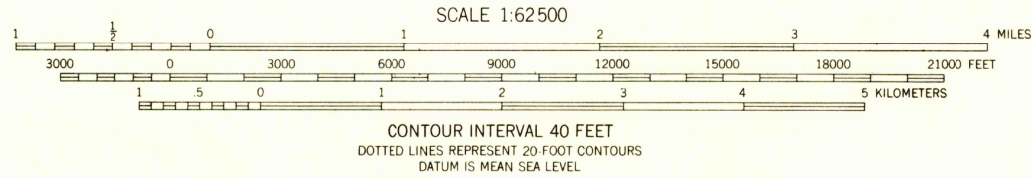
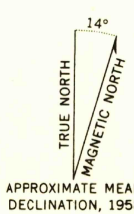


UNITED STATES  
DEPARTMENT OF THE INTERIOR  
GEOLOGICAL SURVEY

NEWCASTLE QUADRANGLE  
WYOMING-SOUTH DAKOTA  
15 MINUTE SERIES (TOPOGRAPHIC)



Maped, edited, and published by the Geological Survey  
Control by USGS and USC&GS  
Topography from 1:24 000-scale maps of Newcastle and Fanny Peak  
7.5 minute quadrangles, surveyed 1951; and from  
aerial photographs by photogrammetric methods  
Aerial photographs taken 1948 and 1954. Field check 1958  
Polyconic projection. 1927 North American datum  
10 000-foot grid based on Wyoming coordinate system,  
east zone and South Dakota coordinate system, south zone  
1000-meter Universal Transverse Mercator grid ticks,  
zone 13, shown in blue  
Dashed land lines indicate approximate locations  
Unchecked elevations are shown in brown



ROAD CLASSIFICATION  
Heavy-duty ——— Light-duty ———  
Medium-duty ——— Unimproved dirt ———  
U.S. Route

The south half of this area also covered by 1:24 000-scale maps  
of Newcastle and Fanny Peak 7.5 minute quadrangles,  
surveyed 1951.  
NEWCASTLE, WYO.-S. DAK.  
N4345-W10400/15  
1958

RETURN TO:  
USGS AND HISTORICAL MAP ARCHIVES

U.S.G.S.  
FILE COPY  
TOPOGRAPHIC DIVISION

MAY 26 1960  
MAY 26 1960

2030