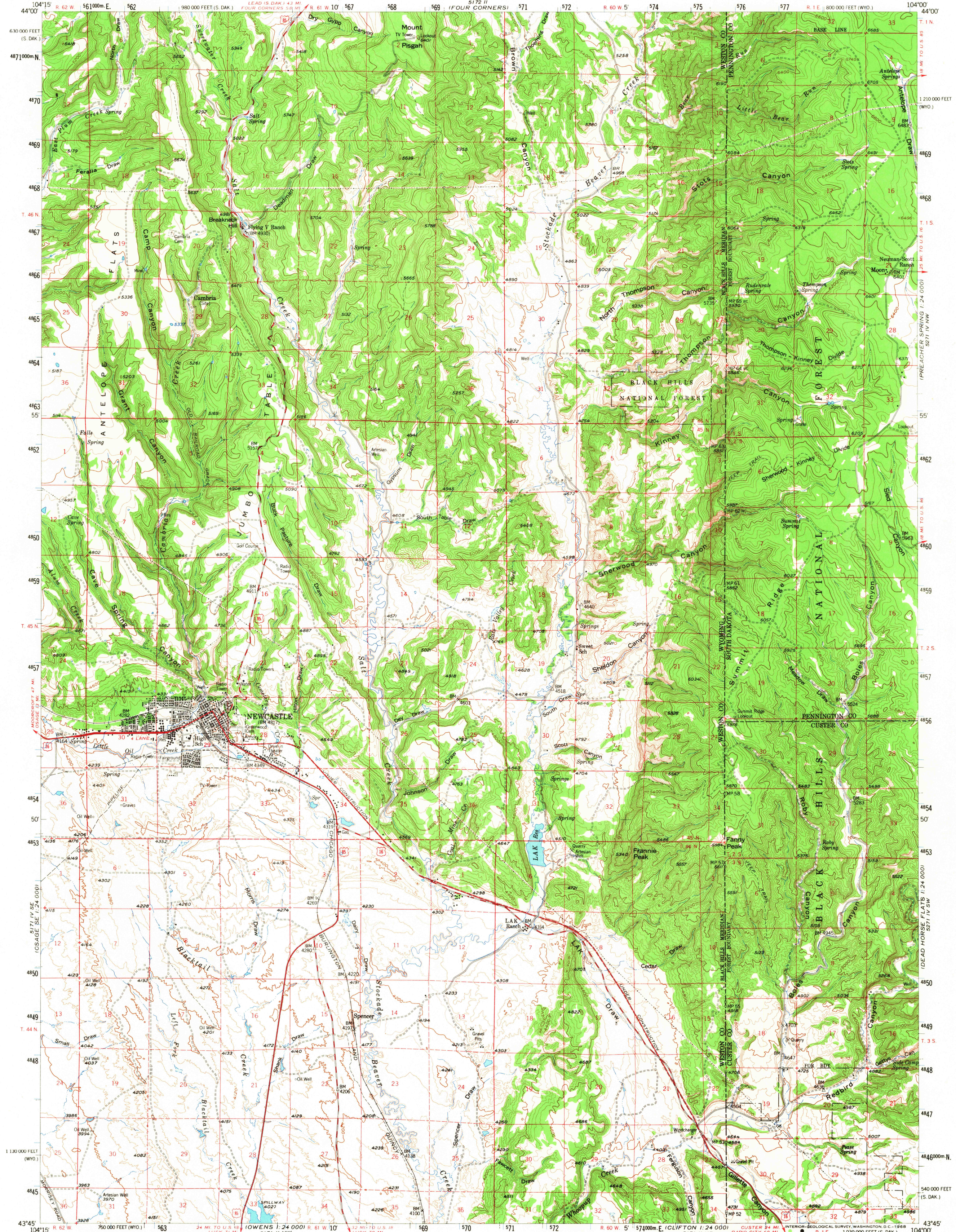
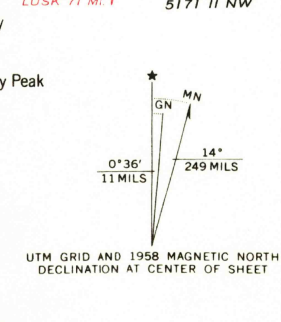


UNITED STATES
DEPARTMENT OF THE INTERIOR
GEOLOGICAL SURVEY

NEWCASTLE QUADRANGLE
WYOMING-SOUTH DAKOTA
15 MINUTE SERIES (TOPOGRAPHIC)



Maped, edited, and published by the Geological Survey
Control by USGS and USC&GS
Topography from 1:24 000-scale maps of Newcastle and Fanny Peak
7.5 minute quadrangles, surveyed 1951; and from
aerial photographs by photogrammetric methods
Aerial photographs taken 1948 and 1954. Field check 1958
Polyconic projection. 1927 North American datum
10,000-foot grid based on Wyoming coordinate system,
east zone and South Dakota coordinate system, south zone
1000-meter Universal Transverse Mercator grid ticks,
zone 13, shown in blue
Dashed land lines indicate approximate locations
Unchecked elevations are shown in brown



THIS MAP COMPLIES WITH NATIONAL MAP ACCURACY STANDARDS
FOR SALE BY U. S. GEOLOGICAL SURVEY, DENVER, COLORADO 80225 OR WASHINGTON, D. C. 20242
A FOLDER DESCRIBING TOPOGRAPHIC MAPS AND SYMBOLS IS AVAILABLE ON REQUEST

U.S.G.S.
TOPOGRAPHIC DIVISION
QUADRANGLE LOCATION

ROAD CLASSIFICATION
Heavy-duty ——— Light-duty ———
Medium-duty ——— Unimproved dirt ———
U.S. Route
NEWCASTLE, WYO.-S. DAK.
N4345-W10400/15
1958
AMS 5171 I-SERIES V774

RETURN TO:
USGS AND HISTORICAL MAP ARCHIVES

4255
APR 3 1968