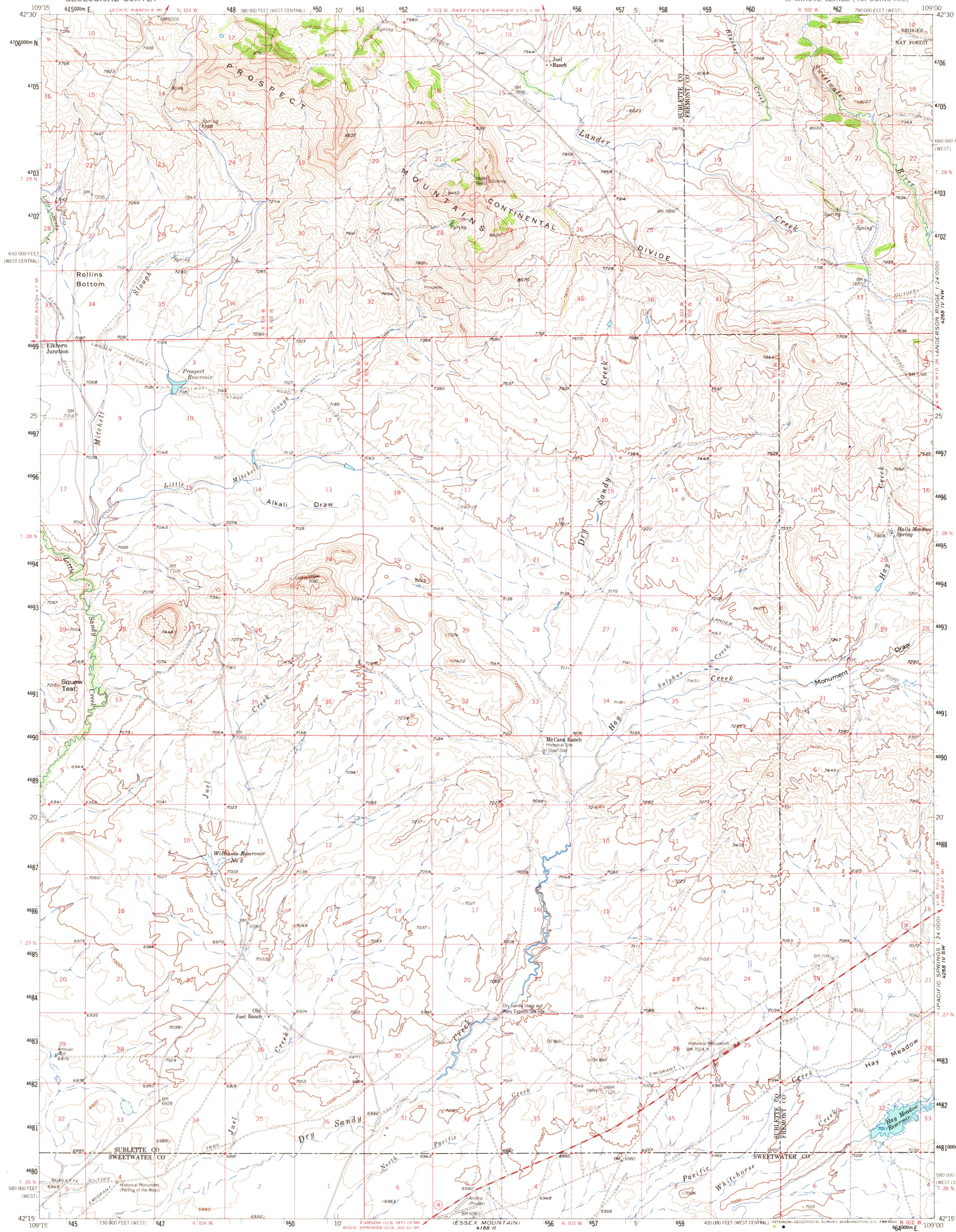
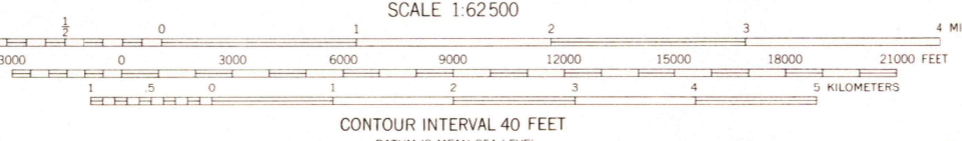
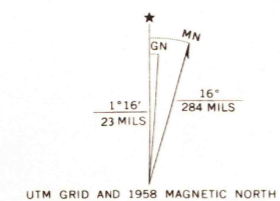


4269 (1/4 SW)
CHRISTINA LAKE
1:24,000



Mapped, edited, and published by the Geological Survey as part of the Department of the Interior program for the development of the Missouri River Basin Control by USGS and USC&GS
Topography from 1:24 000 scale maps of Parting of the Ways and Hay Meadow Reservoir 7.5 minute quadrangles, surveyed 1958; and from aerial photographs by photogrammetric methods
Aerial photographs taken 1956. Field check 1958
Polyconic projection. 1927 North American datum
10,000-foot grid based on Wyoming coordinate system, west and west central zones
1000-meter Universal Transverse Mercator grid ticks, zone 12, shown in blue
Dashed land lines indicate approximate locations



CONTOUR INTERVAL 40 FEET
DATUM IS MEAN SEA LEVEL
THIS MAP COMPLIES WITH NATIONAL MAP ACCURACY STANDARDS
FOR SALE BY U.S. GEOLOGICAL SURVEY, DENVER, COLORADO 80225, OR WASHINGTON, D.C. 20542
A FOLDER DESCRIBING TOPOGRAPHIC MAPS AND SYMBOLS IS AVAILABLE ON REQUEST

ROAD CLASSIFICATION
Medium-duty — Light-duty
Unimproved dirt —



U.S.G.S.
TOPOGRAPHIC DIVISION

PARTING OF THE WAYS, WYO
N4215-W10900/15
1958
AMS 4168 I-SERIES V774

RETURN TO:
USGS AND HISTORICAL MAP ARCHIVES

2715
FEB 1 1958