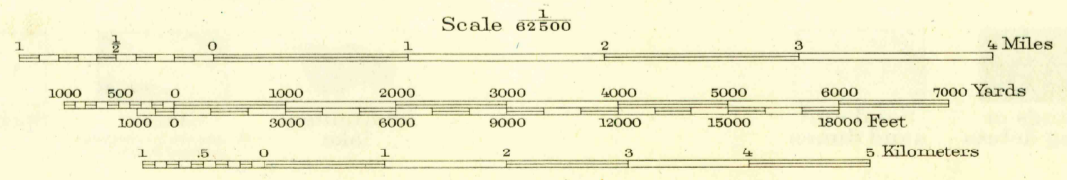
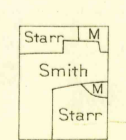
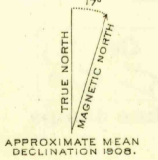


R. B. Marshall, Chief Geographer.  
E. C. Barnard, Geographer in charge.  
Topography by Glenn S. Smith, Lee Morrison, and H. S. Starr.  
Control by Coast and Geodetic Survey, R. B. Robertson,  
H. M. Huntington, C. S. Moyer, and J. D. Weens.  
Surveyed in 1908.



Contour interval 50 feet.  
Datum is mean sea level.  
(Road adjustment indicates that elevations on this map  
should be increased 2 feet.)



Edition of May 1910, reprinted 1946  
Polyconic projection, North American datum.

ROCK SPRINGS, WYO.  
N 430-W 10900/15

U. S. G. S.  
FILE COPY  
Inspection and Editing.

RETURN TO:  
U.S.G.S. HISTORICAL MAP ARCHIVES