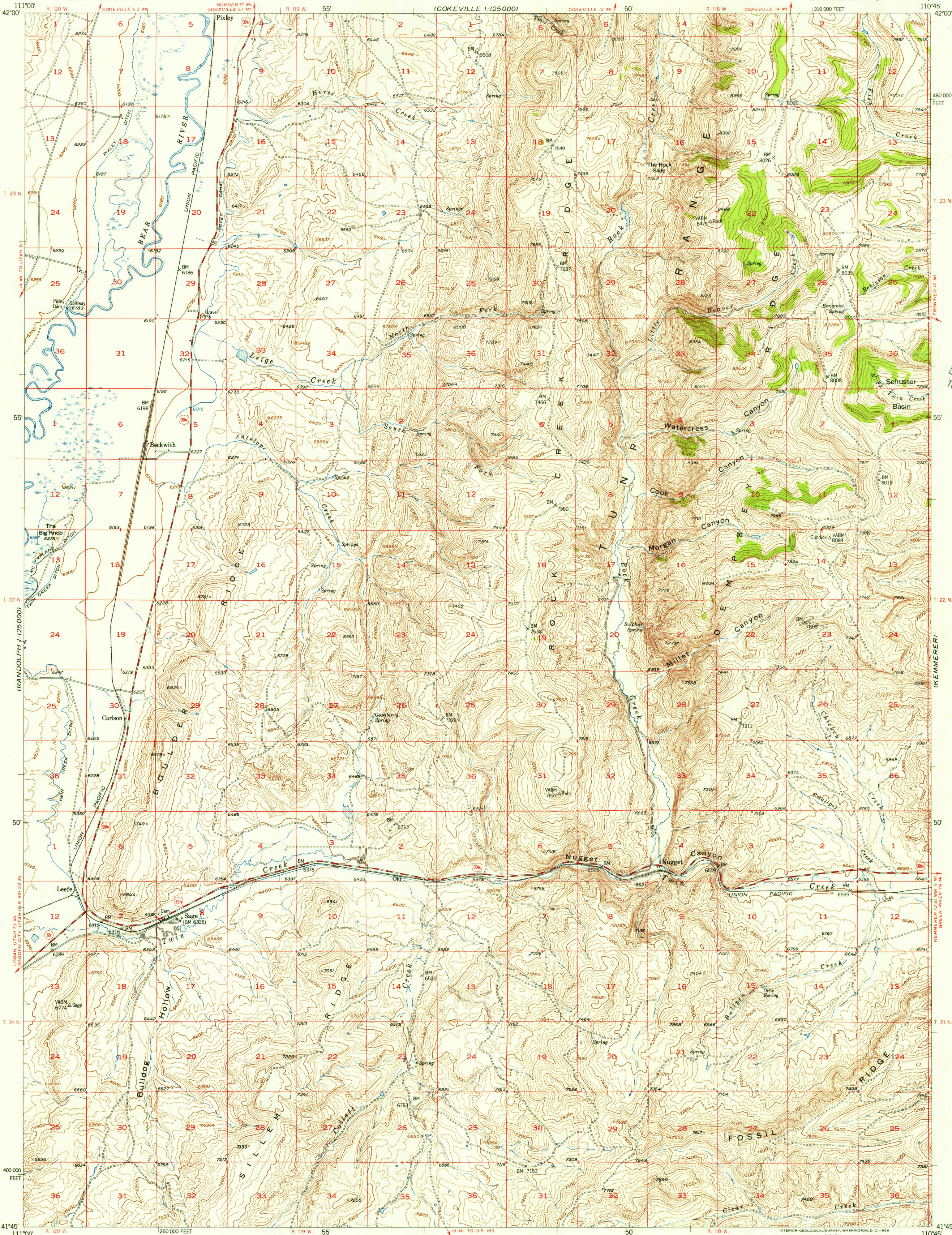


(MONTPELLIER)
1:125,000

UNITED STATES
DEPARTMENT OF THE INTERIOR
GEOLOGICAL SURVEY

SAGE QUADRANGLE
WYOMING-LINCOLN CO.
15 MINUTE SERIES (TOPOGRAPHIC)

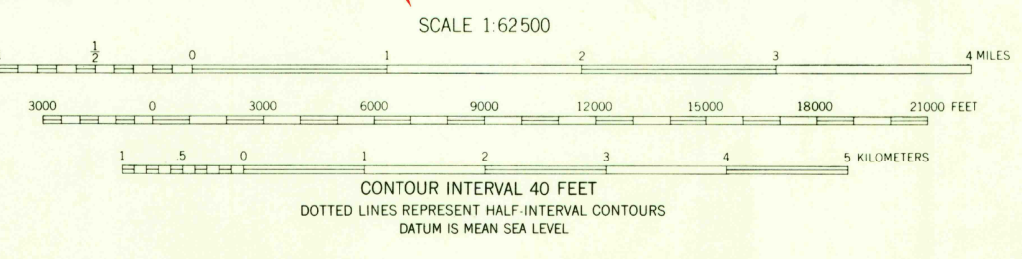
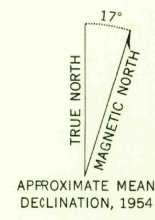
(COKEVILLE)
1:125,000



U.S.G.S.
FILE COPY
TOPOGRAPHIC DIVISION

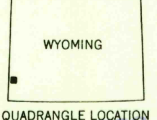
(RANDOLPH)
1:125,000

Mapped, edited, and published by the Geological Survey
Control by USGS and USC&GS
Topography from aerial photographs by multiplex methods
and by plane-table surveys 1954. Aerial photographs taken 1951
Polyconic projection, 1927 North American datum
10,000-foot grid based on Wyoming coordinate system,
west zone
Dashed land lines indicate approximate locations
Unchecked elevations are shown in brown



ROAD CLASSIFICATION

Heavy-duty	Light-duty
Medium-duty	Unimproved dirt
U.S. Route	State Route



U.S.G.S.
FILE COPY
TOPOGRAPHIC DIVISION

SAGE, WYO.
N4145-W11045/15
1954

FOR SALE BY U.S. GEOLOGICAL SURVEY, FEDERAL CENTER, DENVER, COLORADO OR WASHINGTON 25, D.C.
A FOLDER DESCRIBING TOPOGRAPHIC MAPS AND SYMBOLS IS AVAILABLE ON REQUEST

RETURN TO:
USGS AND HISTORICAL MAP ARCHIVES