

(LARAMIE 1:25,000)

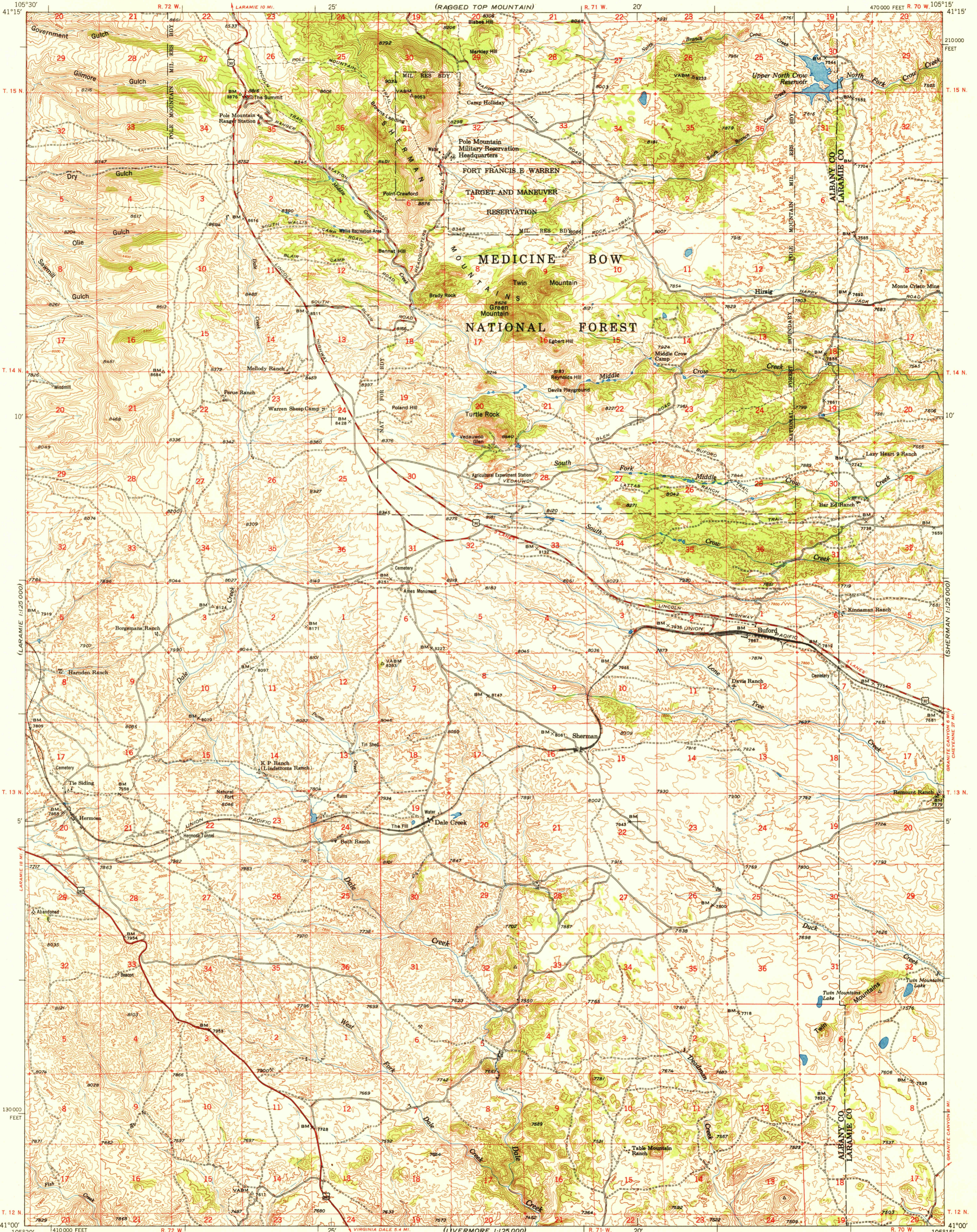
(SHERMAN 1:25,000)

U.S.G.S. FILE COPY Inspection and Editing.

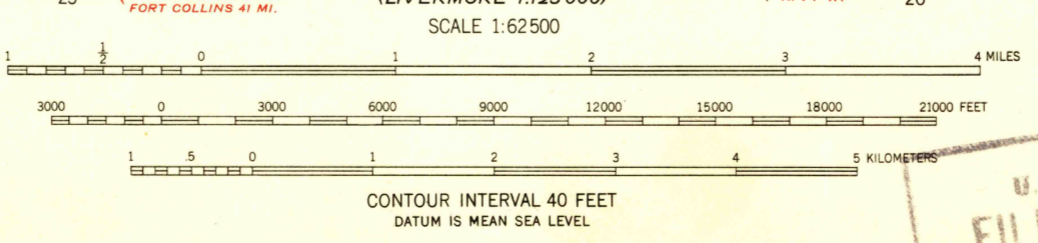
UNITED STATES DEPARTMENT OF THE INTERIOR GEOLOGICAL SURVEY

UNITED STATES DEPARTMENT OF THE ARMY CORPS OF ENGINEERS (RAGGED TOP MOUNTAIN)

SHERMAN MOUNTAINS QUADRANGLE WYOMING 15 MINUTE SERIES (TOPOGRAPHIC)



Mapped, edited, and published by the Geological Survey Control by USGS and USC&GS Topography from aerial photographs by multiplex methods Aerial photographs taken 1947. Field check 1948 Polyconic projection. 1927 North American datum 10,000-foot grid based on Wyoming coordinate system, east zone



ROAD CLASSIFICATION HARD-SURFACE ALL WEATHER ROADS DRY WEATHER ROADS Heavy-duty Lane Lane Improved dirt Medium-duty Lane Lane Unimproved dirt Loose-surface, graded, or narrow hard-surface U.S. Route State Route

U.S.G.S. FILE COPY Inspection and Editing.

SHERMAN MOUNTAINS, WYO. N4100-W10515/15 EDITION OF 1950

FOR SALE BY U.S. GEOLOGICAL SURVEY, FEDERAL CENTER, DENVER, COLORADO OR WASHINGTON 25, D. C. A FOLDER DESCRIBING TOPOGRAPHIC MAPS AND SYMBOLS IS AVAILABLE ON REQUEST

RETURN TO: USGS NMD HISTORICAL MAP ARCHIVES

(LIVERMORE 1:25,000)

(HOME 1:25,000)