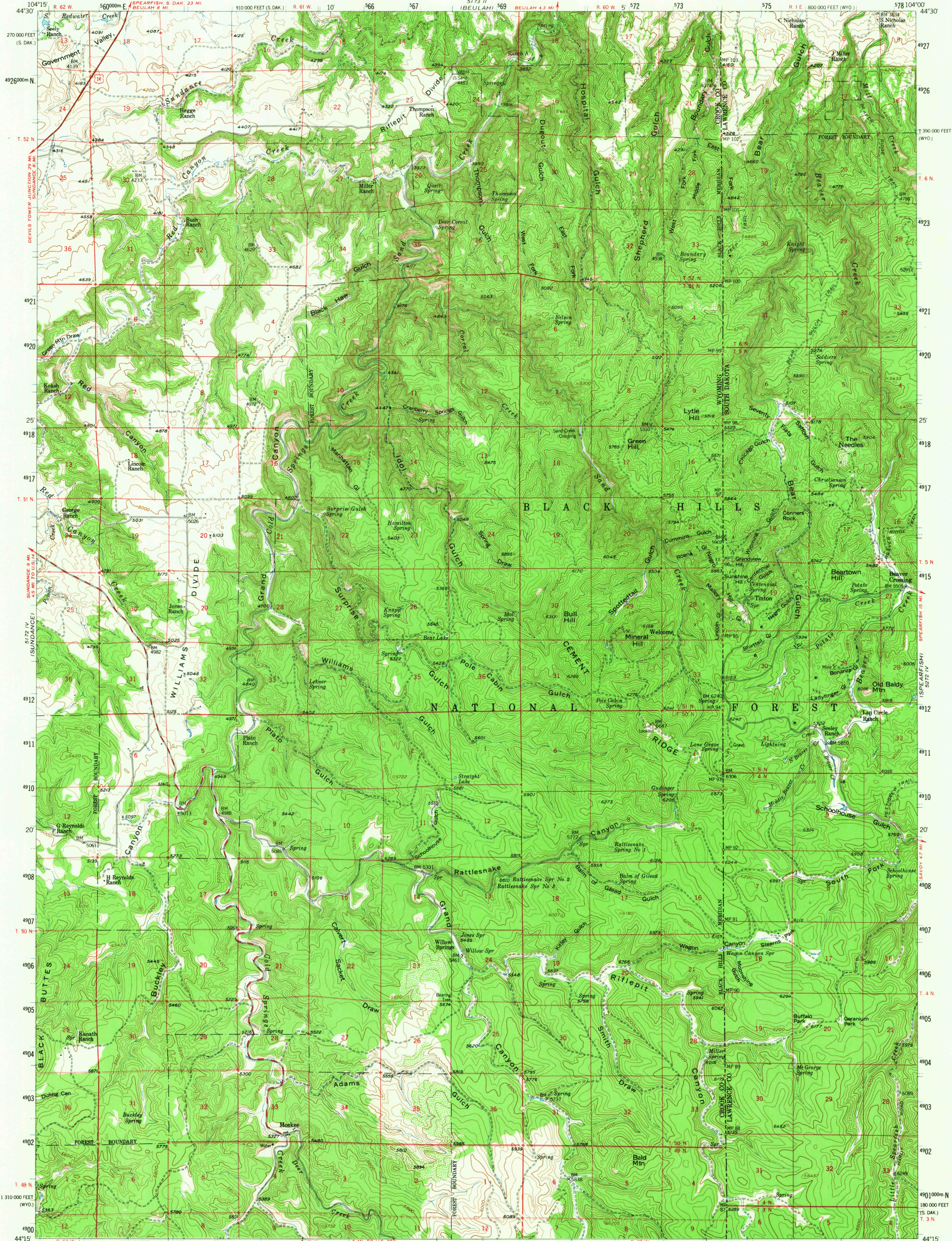
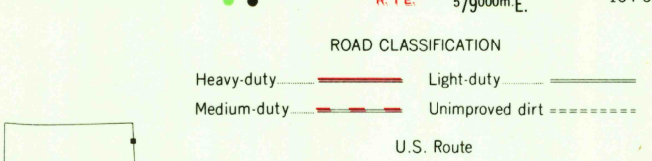
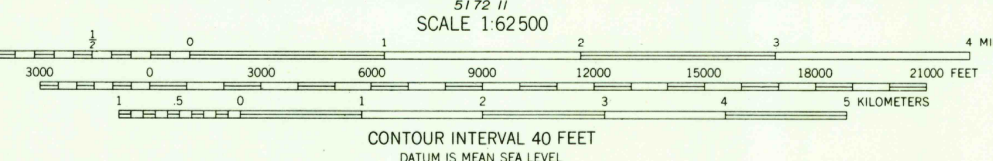
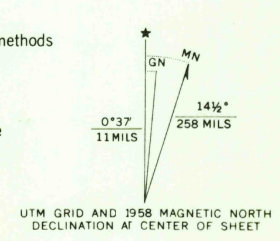


UNITED STATES  
DEPARTMENT OF THE INTERIOR  
GEOLOGICAL SURVEY

TINTON QUADRANGLE  
WYOMING-SOUTH DAKOTA  
15 MINUTE SERIES (TOPOGRAPHIC)



Maped, edited, and published by the Geological Survey  
Control by USGS and USC&GS  
Topography from aerial photographs by photogrammetric methods  
Aerial photographs taken 1954. Field check 1958  
Polyconic projection. 1927 North American datum  
10,000-foot grid based on Wyoming coordinate system,  
east zone and South Dakota coordinate system, north zone  
1000-meter Universal Transverse Mercator grid ticks,  
zone 13, shown in blue  
Unchecked elevations are shown in brown



THIS MAP COMPLIES WITH NATIONAL MAP ACCURACY STANDARDS  
FOR SALE BY U. S. GEOLOGICAL SURVEY, DENVER, COLORADO 80225 OR WASHINGTON, D. C. 20242  
A FOLDER DESCRIBING TOPOGRAPHIC MAPS AND SYMBOLS IS AVAILABLE ON REQUEST

U.S.G.S.  
TOPOGRAPHIC DIVISION

TINTON, WYO.-S. DAK.  
N4415-W10400/15  
1958  
AMS 5172 I-SERIES V774

RETURN TO:  
USGS AND HISTORICAL MAP ARCHIVES

2760  
OCT 7 1966