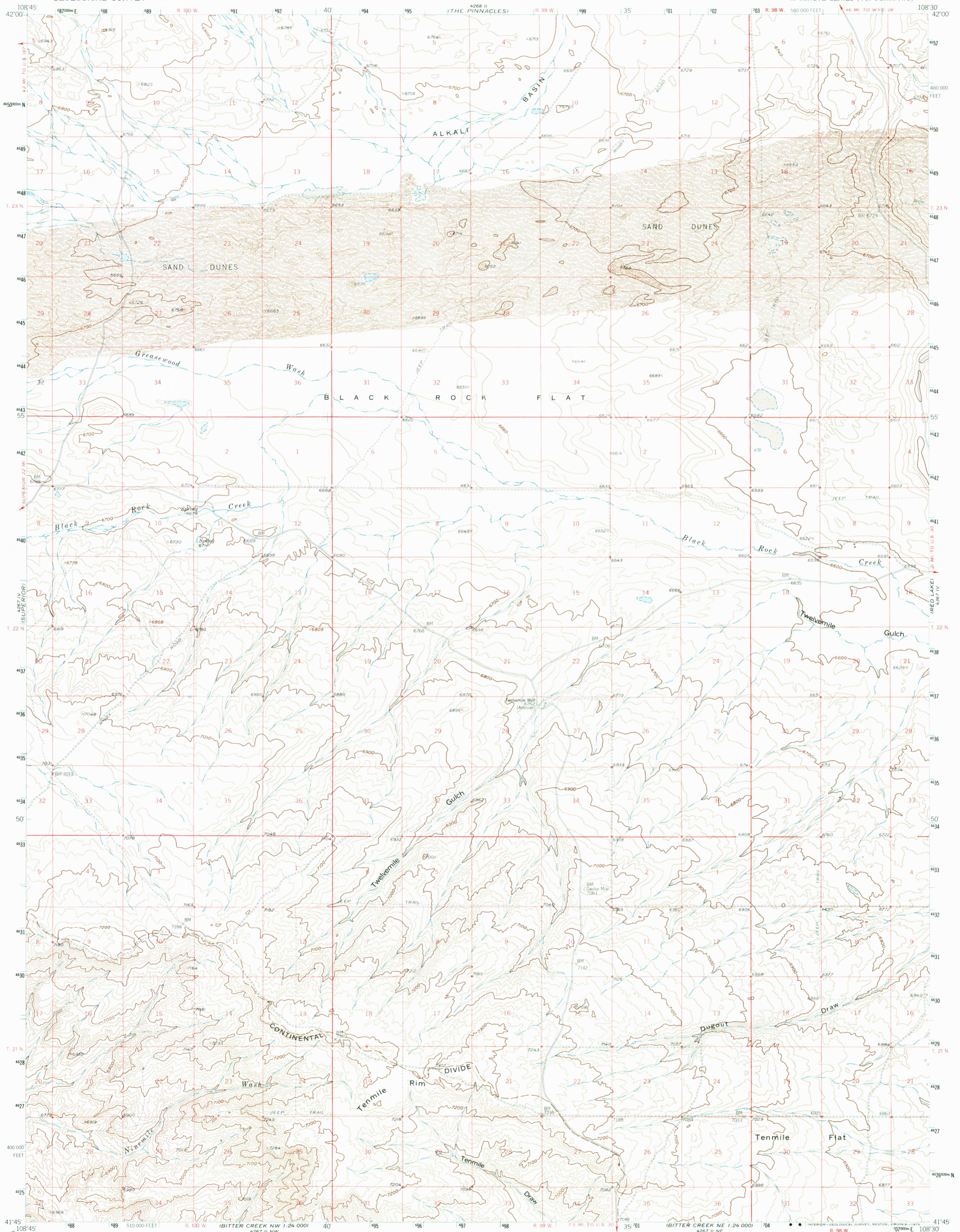
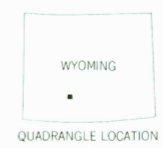
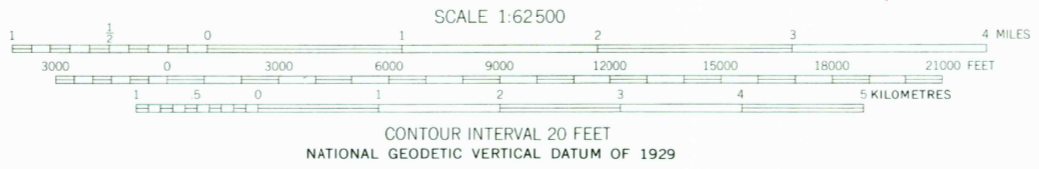


UNITED STATES
DEPARTMENT OF THE INTERIOR
GEOLOGICAL SURVEY

TWELVEMILE WELL QUADRANGLE
WYOMING-SWEETWATER CO.
15 MINUTE SERIES (TOPOGRAPHIC)



Mapped, edited, and published by the Geological Survey as part of the Department of the Interior program for the development of the Missouri River Basin Control by USGS and USCGS
Topography from aerial photographs by photogrammetric methods
Aerial photographs taken 1956, Field check 1958
Polyconic projection, 1927 North American datum, 10,000-foot grid based on Wyoming coordinate system, west central zone
1000 metre Universal Transverse Mercator grid ticks, zone 12, shown in blue
Unchecked elevations are shown in brown



ROAD CLASSIFICATION
Light-duty ——— Unimproved dirt - - - - -

THIS MAP COMPLIES WITH NATIONAL MAP ACCURACY STANDARDS
FOR SALE BY U. S. GEOLOGICAL SURVEY, DENVER, COLORADO 80225, OR RESTON, VIRGINIA 22092
A FOLDER DESCRIBING TOPOGRAPHIC MAPS AND SYMBOLS IS AVAILABLE ON REQUEST

USGS
HISTORICAL FILE
TOPOGRAPHIC DIVISION

TWELVEMILE WELL, WYO
N4145-W10830/15
1958
AMS 4267 1 SERIES-V794

FEB 05 1976

FREEHILLER GAP
POINT OF ROCKS 1:24 000
4267 11 NE

4267 11 NW
FIVE FINGERS BUTTE
BITTER CREEK NW 1:24 000
4267 11 NE
BITTER CREEK NE 1:24 000
4267 11 NE

RETURN TO:
U.S. GEOLOGICAL SURVEY
HISTORICAL MAP ARCHIVES