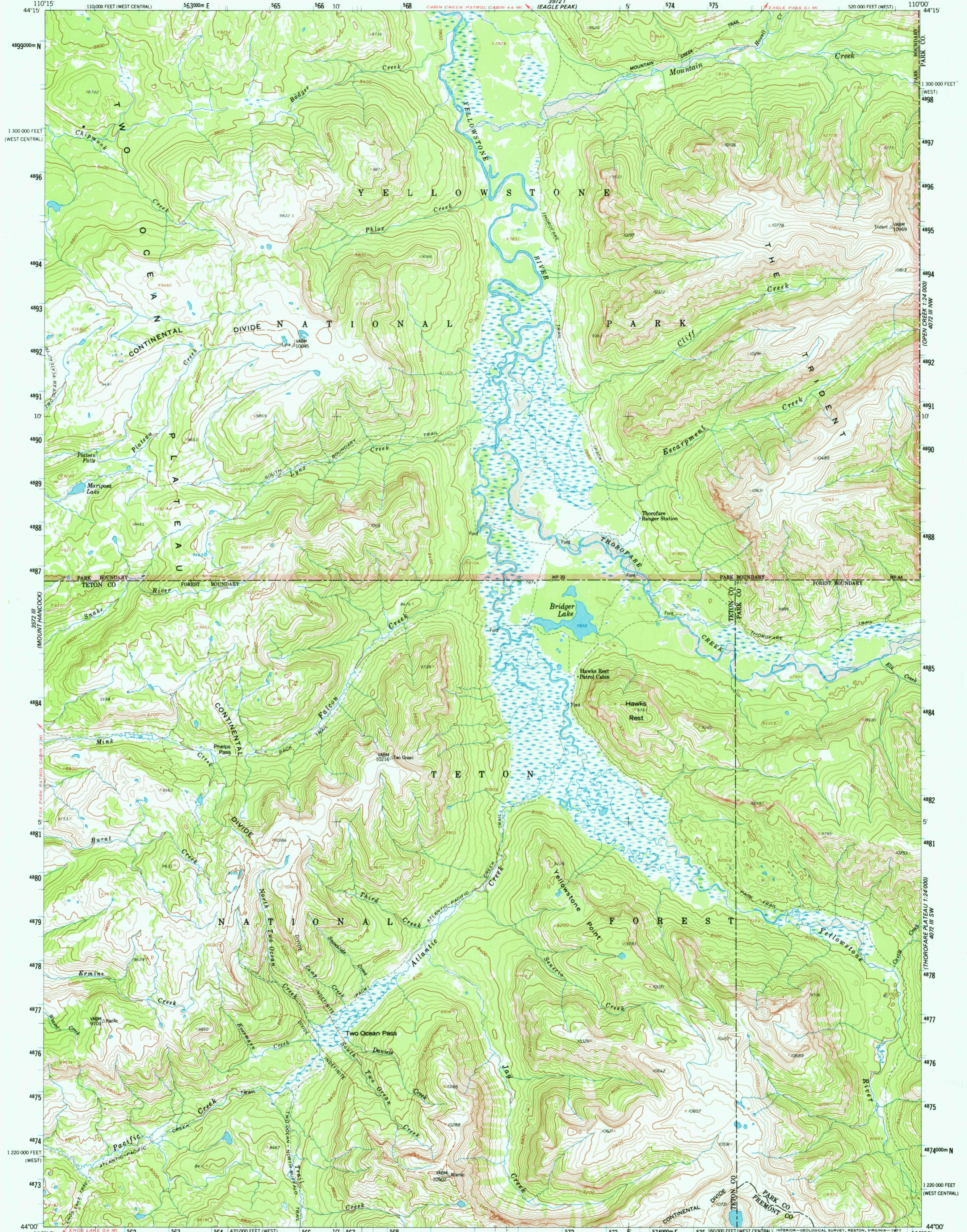
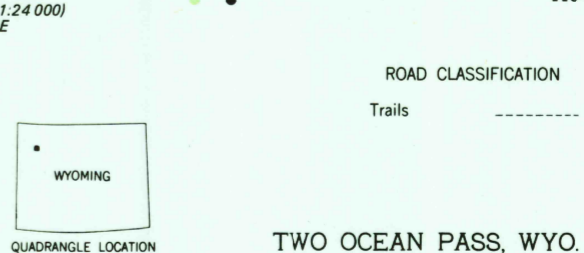
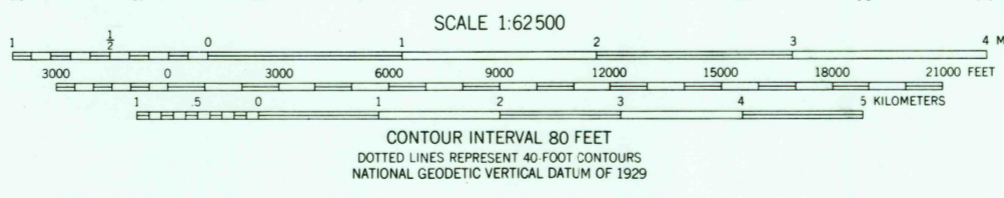
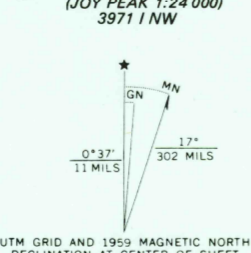


3972 I NE  
(FRANK ISLAND)

3972 IV SW  
(PARK CO)



Mapped, edited, and published by the Geological Survey  
Control by USGS and US&GS  
Topography from aerial photographs by photogrammetric methods  
Aerial photographs taken 1954. Field check 1959  
Polyconic projection. 1927 North American datum  
10,000-foot grid based on Wyoming coordinate system,  
west and west central zones  
1000-meter Universal Transverse Mercator grid ticks,  
zone 12, shown in blue  
Unchecked elevations are shown in brown



THIS MAP COMPLIES WITH NATIONAL MAP ACCURACY STANDARDS  
FOR SALE BY U.S. GEOLOGICAL SURVEY, DENVER, COLORADO 80225, OR RESTON, VIRGINIA 22092  
A FOLDER DESCRIBING TOPOGRAPHIC MAPS AND SYMBOLS IS AVAILABLE ON REQUEST

TWO OCEAN PASS, WYO.  
N4400-W1000/15  
1959  
AMS 3972 II-SERIES V774

USGS  
Historical File  
Topographic Division

SEP 13 1977

3780

RETURN TO: MAP ARCHIVES