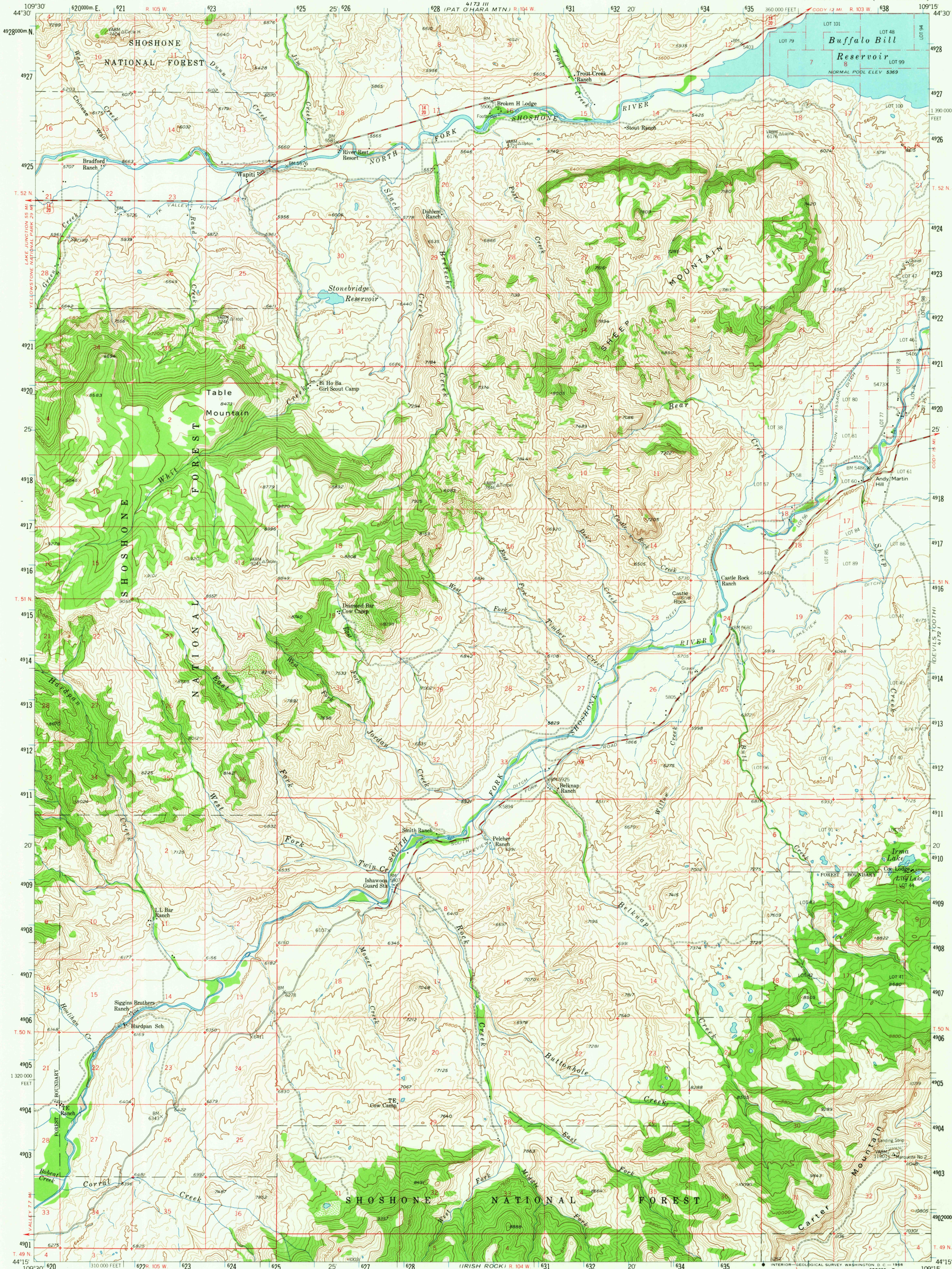
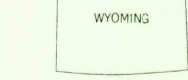
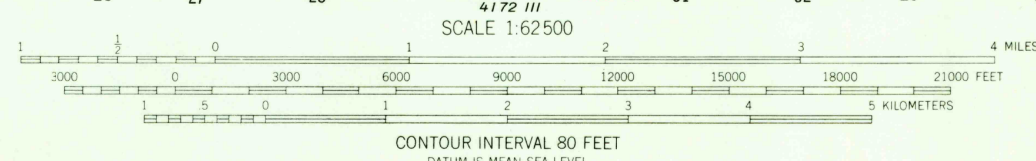
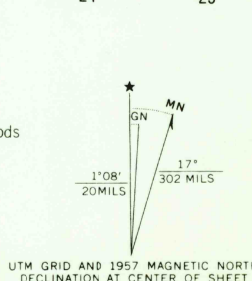


UNITED STATES
DEPARTMENT OF THE INTERIOR
GEOLOGICAL SURVEY

WAPITI QUADRANGLE
WYOMING-PARK CO.
15 MINUTE SERIES (TOPOGRAPHIC)



Maped, edited, and published by the Geological Survey as part of the Department of the Interior program for the development of the Missouri River Basin. Control by USGS and USC&GS. Topography from aerial photographs by photogrammetric methods. Aerial photographs taken 1953. Field check 1957. Polyconic projection. 1927 North American datum. 10,000-foot grid based on Wyoming coordinate system, west central zone. 1000-meter Universal Transverse Mercator grid ticks, zone 12, shown in blue. Dashed land lines indicate approximate locations. Certain land lines unsurveyed in T.49 N.-R.105 W.



WAPITI, WYO.
N4415-W10915/15

THIS MAP COMPLIES WITH NATIONAL MAP ACCURACY STANDARDS
FOR SALE BY U. S. GEOLOGICAL SURVEY, DENVER, COLORADO 80225 OR WASHINGTON, D. C. 20242
A FOLDER DESCRIBING TOPOGRAPHIC MAPS AND SYMBOLS IS AVAILABLE ON REQUEST

AMS 4172 IV-SERIES V774

U.S.G.S.
FILE COPY
TOPOGRAPHIC DIVISION
RETURN TO:
USGS NHD HISTORICAL MAP ARCHIVES

AUG 24 1955