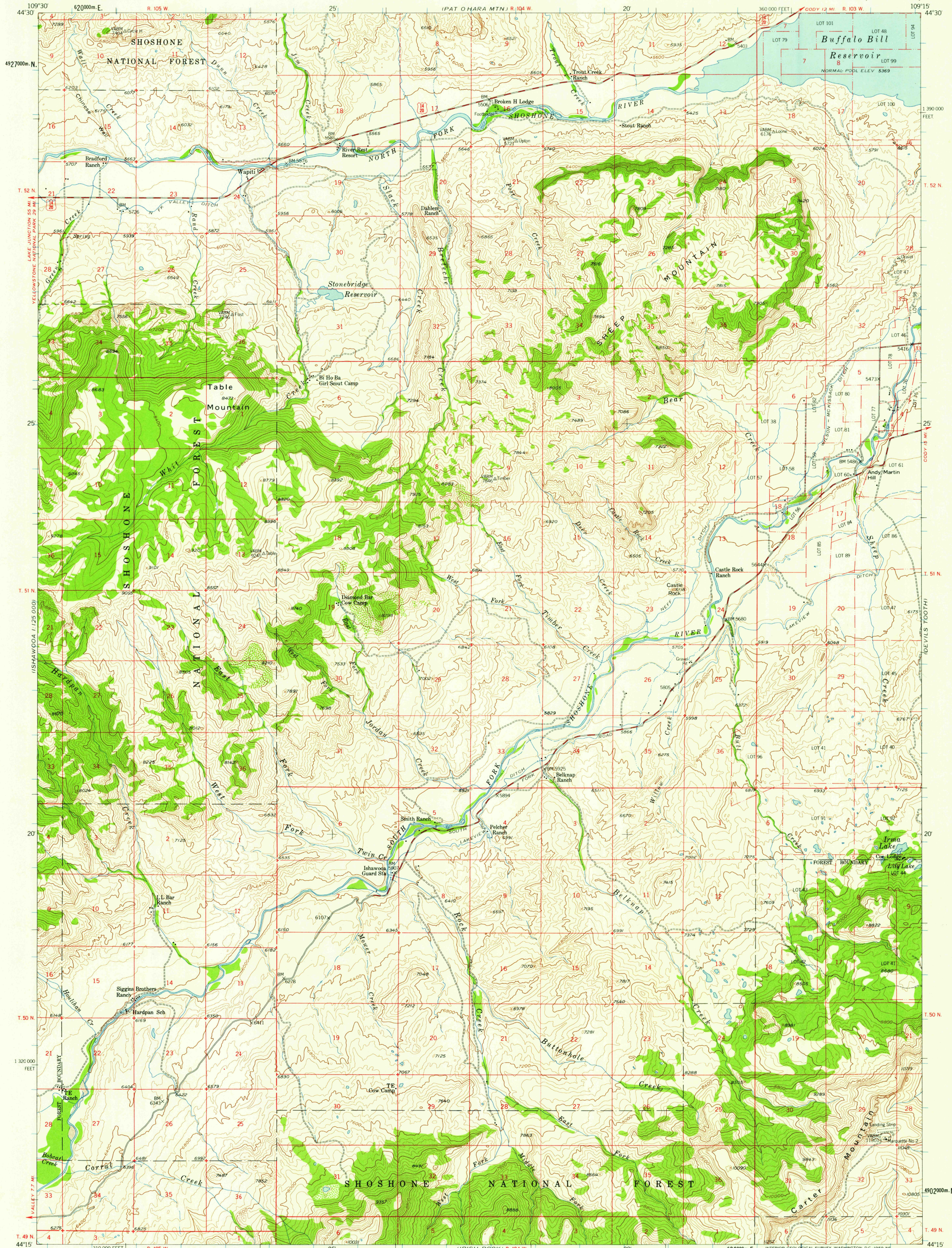
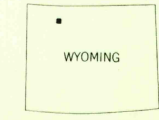
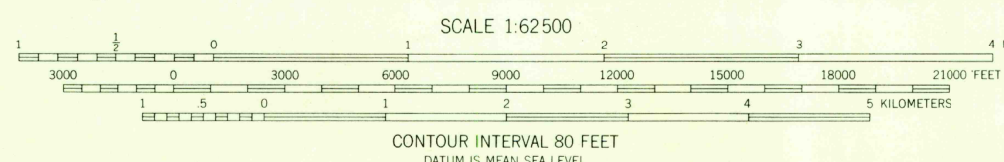
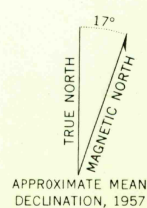


UNITED STATES
DEPARTMENT OF THE INTERIOR
GEOLOGICAL SURVEY

WAPITI QUADRANGLE
WYOMING-PARK CO.
15 MINUTE SERIES (TOPOGRAPHIC)
1:62,500



Mapped, edited, and published by the Geological Survey
as part of the Department of the Interior program
for the development of the Missouri River Basin
Control by USGS and USC&GS
Topography from aerial photographs by photogrammetric methods
Aerial photographs taken 1953. Field check 1957
Polyconic projection. 1927 North American datum
10,000-foot grid based on Wyoming coordinate system,
west central zone
1000-meter Universal Transverse Mercator grid ticks,
zone 12, shown in blue
Dashed land lines indicate approximate locations
Certain land lines unsurveyed in T.49 N.-R.105 W.



ROAD CLASSIFICATION
Medium-duty ——— Light-duty ———
Unimproved dirt ——— U.S. Route ———
U.S.G.S.
FILE COPY
TOPOGRAPHIC DIVISION
WAPITI, WYO.
N4415-W10915/15
1957

RETURN TO:
USGS AND HISTORICAL MAP ARCHIVES

MAY 20 1959
2410