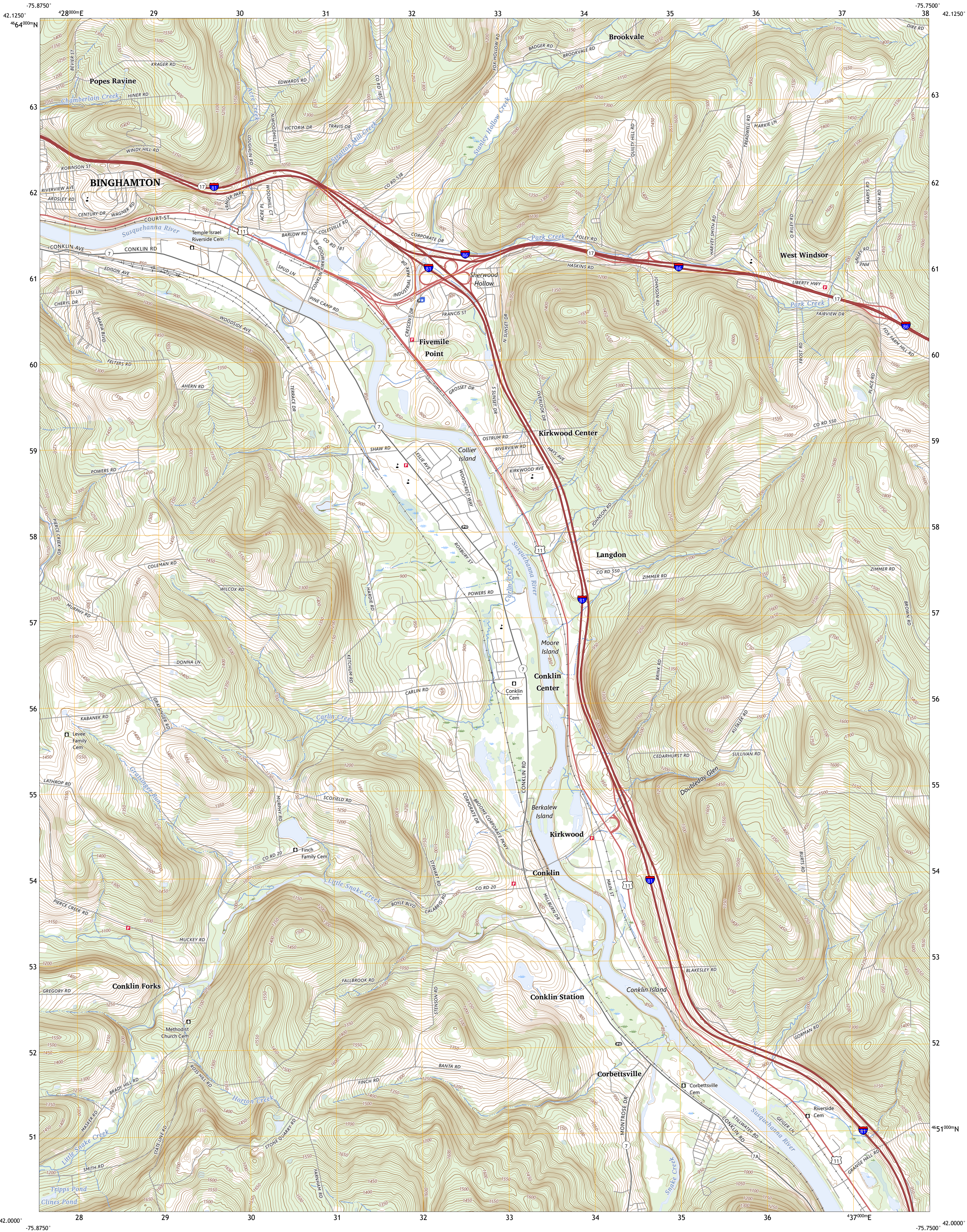




U.S. DEPARTMENT OF THE INTERIOR  
U.S. GEOLOGICAL SURVEY

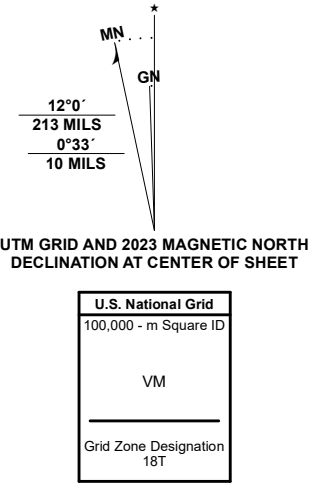


BINGHAMTON EAST QUADRANGLE  
NEW YORK - BROOME COUNTY  
7.5-MINUTE SERIES



Produced by the United States Geological Survey  
North American Datum of 1983 (NAD83)  
World Geodetic System of 1984 (WGS84). Projection and  
1 000-meter grid/Universal Transverse Mercator, Zone 18T  
This map is not a legal document. Boundaries may be  
generalized for this map scale. Private lands within government  
reservations may not be shown. Obtain permission before  
entering private lands.

Imagery.....NAIP, September 2017 - December 2017  
Roads.....U.S. Census Bureau, 2016  
Names.....GNS, 1980 - 2023  
Hydrography.....National Hydrography Dataset, 2002 - 2021  
Contours.....National Elevation Dataset, 1999  
Boundaries.....Multiple sources; see metadata file 2021 - 2022  
Wetlands.....FWS National Wetlands Inventory 1976 - 1982



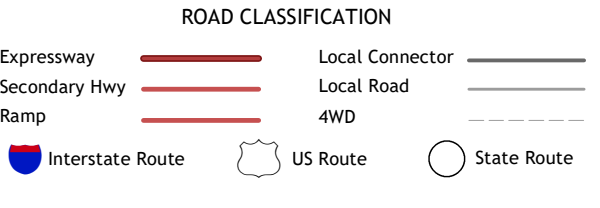
CONTOUR INTERVAL 10 FEET  
NORTH AMERICAN VERTICAL DATUM OF 1988

This map was produced to conform with the  
National Geospatial Program US Topo Product Standard.



1	2	3
4	5	6
7	8	9

1 Castle Creek  
2 Chenango Forks  
3 Belden  
4 Binghamton West  
5 Windsor  
6 Laurel Lake  
7 Franklin Forks  
8 Great Bend



BINGHAMTON EAST, NY  
2023

