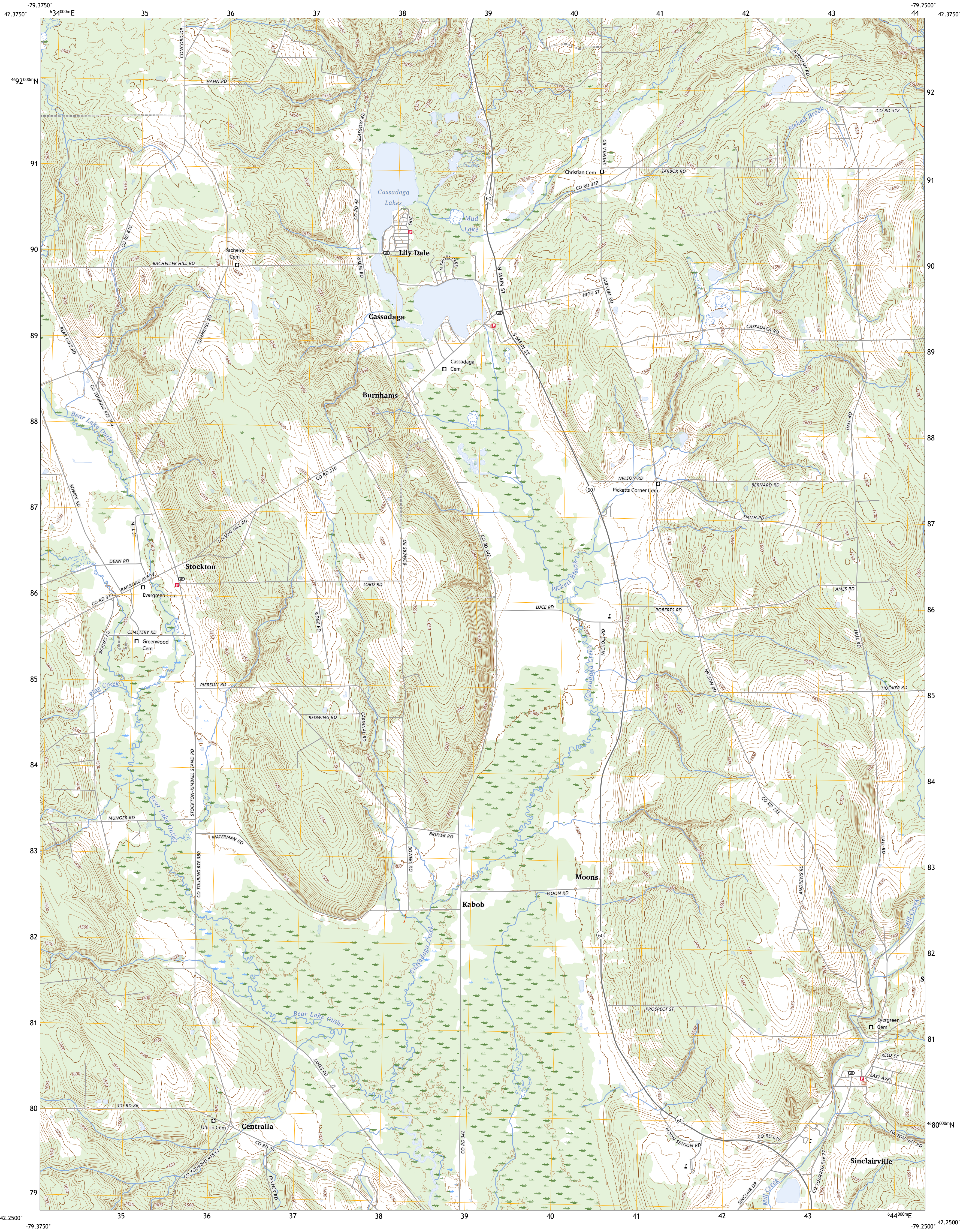




U.S. DEPARTMENT OF THE INTERIOR  
U.S. GEOLOGICAL SURVEY



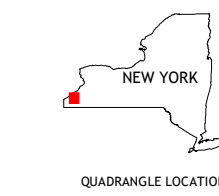
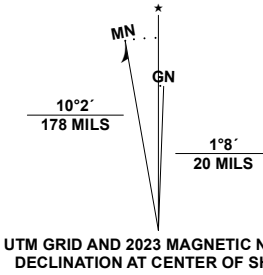
CASSADAGA QUADRANGLE  
NEW YORK - CHAUTAUQUA COUNTY  
7.5-MINUTE SERIES



Produced by the United States Geological Survey

North American Datum of 1983 (NAD83)  
World Geodetic System of 1984 (WGS84). Projection and  
1 000-meter grid/Universal Transverse Mercator, Zone 17T  
This map is not a legal document. Private lands within government  
reservations may not be shown. Obtain permission before  
entering private lands.

Imagery.....NAIP, September 2017 - December 2017  
Roads.....U.S. Census Bureau, 2016  
Names.....GNIS, 1980 - 2023  
Hydrography.....National Hydrography Dataset, 2004 - 2022  
Contours.....National Elevation Dataset, 2018  
Boundaries.....Multiple sources; see metadata file 2021 - 2022  
Wetlands.....FWS National Wetlands Inventory 1981



1	2	3
4	5	6
7	8	9

ADJOINING QUADRANGLES

1 Brocton  
2 Dunkirk  
3 Forestville  
4 Hamlet  
5 Hamlet  
6 Chautauqua  
7 Ellery Center  
8 Gerry

ROAD CLASSIFICATION	
Expressway	Local Connector
Secondary Hwy	Local Road
Ramp	4WD
Interstate Route	US Route
	State Route

CASSADAGA, NY  
2023

