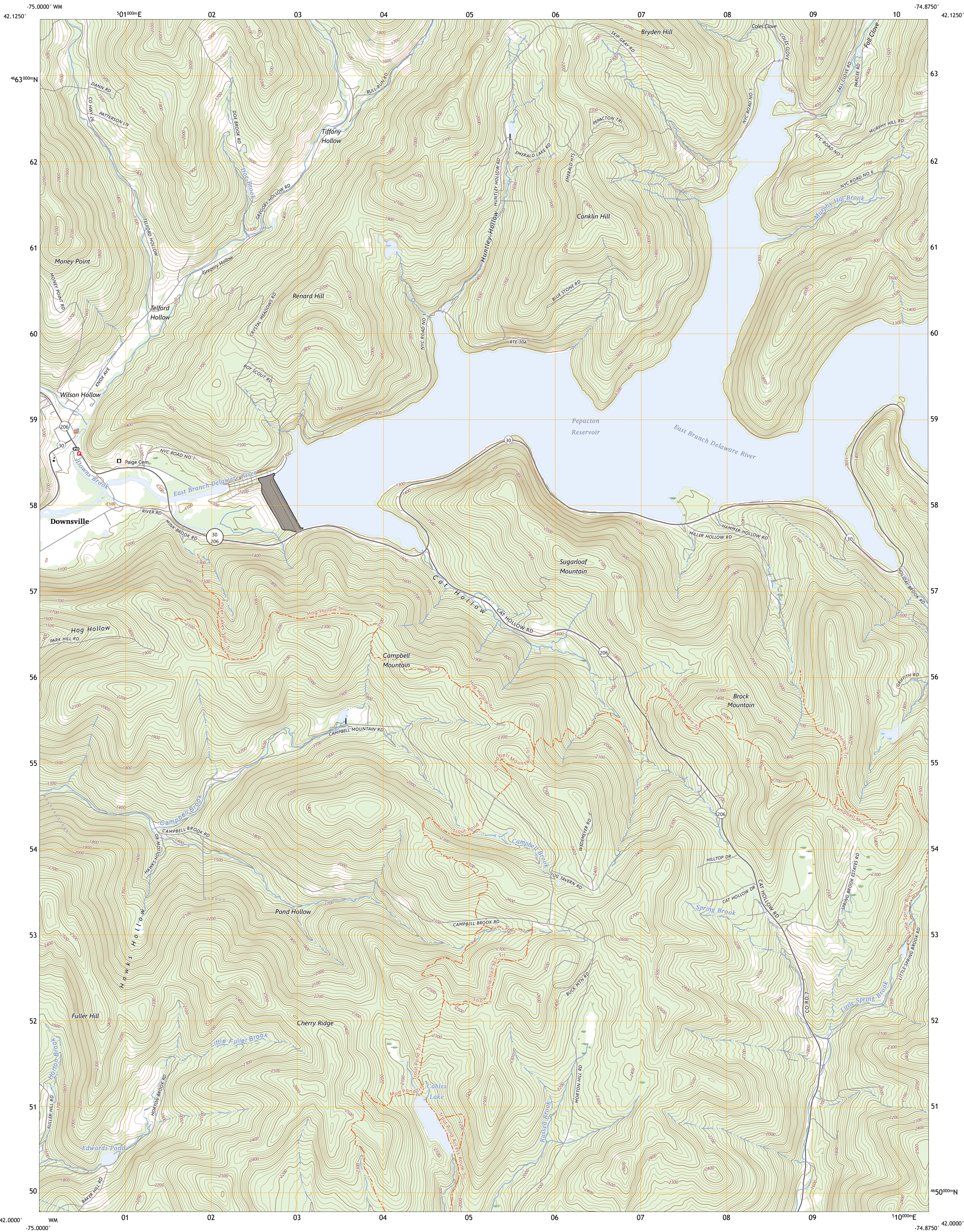




U.S. DEPARTMENT OF THE INTERIOR
U.S. GEOLOGICAL SURVEY

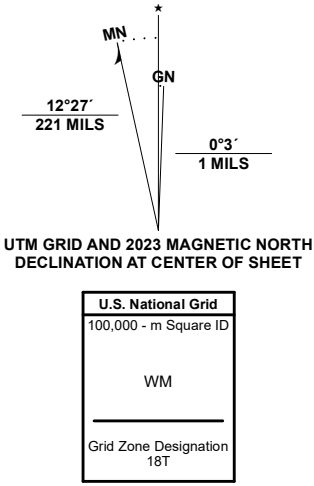


DOWNSVILLE QUADRANGLE
NEW YORK - DELAWARE COUNTY
7.5-MINUTE SERIES



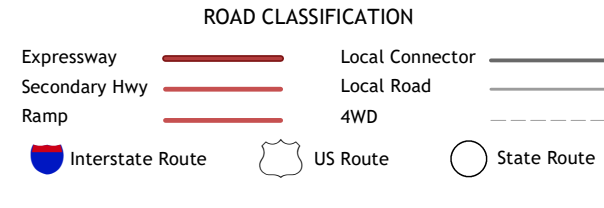
Produced by the United States Geological Survey

North American Datum of 1983 (NAD83)
World Geodetic System of 1984 (WGS84). Projection and
1 000-meter grid/Universal Transverse Mercator, Zone 18T
This map is not a legal document. Boundaries may be
generalized for this map scale. Private lands within government
reservations may not be shown. Obtain permission before
entering private lands.
Imagery.....NAIP, October 2017 - December 2017
Roads.....U.S. Census Bureau, 2016
Names.....GNIS, 1980 - 2023
Hydrography.....National Hydrography Dataset, 2001 - 2023
Contours.....National Elevation Dataset, 1998
Boundaries.....Multiple sources; see metadata file 2021 - 2022
Wetlands.....FWS National Wetlands Inventory 1986 - 2003



1	2	3
4	5	6
7	8	9

1 Walton East
2 Hamden
3 Andes
4 Corbett
5 Lewbeach
6 Horton
7 Roscoe
8 Livingston Manor



DOWNSVILLE, NY
2023

