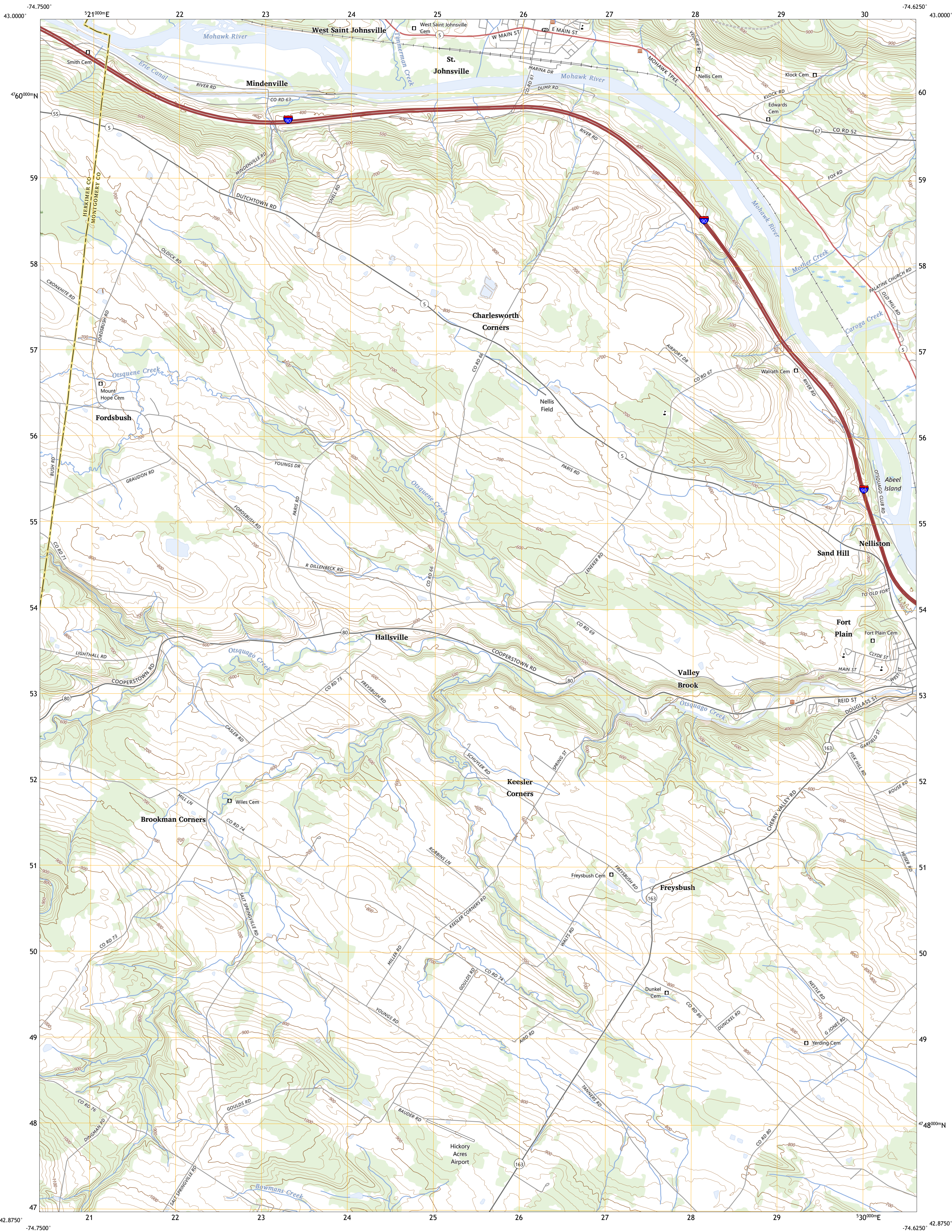




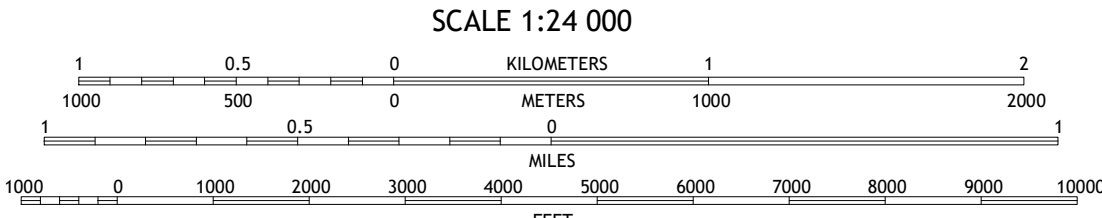
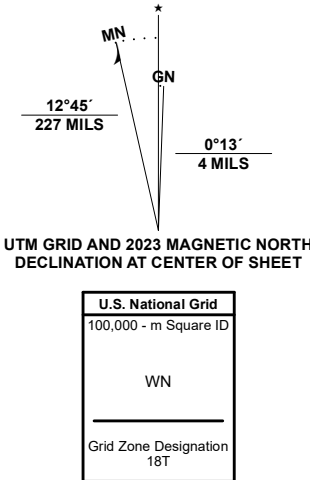
U.S. DEPARTMENT OF THE INTERIOR  
U.S. GEOLOGICAL SURVEY



FORT PLAIN QUADRANGLE  
NEW YORK  
7.5-MINUTE SERIES



Produced by the United States Geological Survey  
North American Datum of 1983 (NAD83)  
World Geodetic System of 1984 (WGS84) - Projection and  
1 000-meter grid/Universal Transverse Mercator, Zone 18T  
This map is not a legal document. Boundaries may be  
generalized for this map scale. Private lands within government  
reservations may not be shown. Obtain permission before  
entering private lands.  
Imagery.....NAIP, October 2017 - December 2017  
Roads.....U.S. Census Bureau, 2016  
Names.....GNIS, 1980 - 2023  
Hydrography.....National Hydrography Dataset, 2002 - 2020  
Contours.....National Elevation Dataset, 2016  
Boundaries.....Multiple sources; see metadata file 2021 - 2022  
Wetlands.....FWS National Wetlands Inventory 1997



1	2	3
4	5	6
7	8	9

1 Little Falls  
2 Oppenheim  
3 Lassettsville  
4 Van Hornesville  
5 Canajoharie  
6 East Springfield  
7 Sprout Brook  
8 Sharon Springs

ROAD CLASSIFICATION  
Expressway  
Secondary Hwy  
Ramp  
Interstate Route  
Local Connector  
Local Road  
4WD  
US Route  
State Route

FORT PLAIN, NY  
2023

