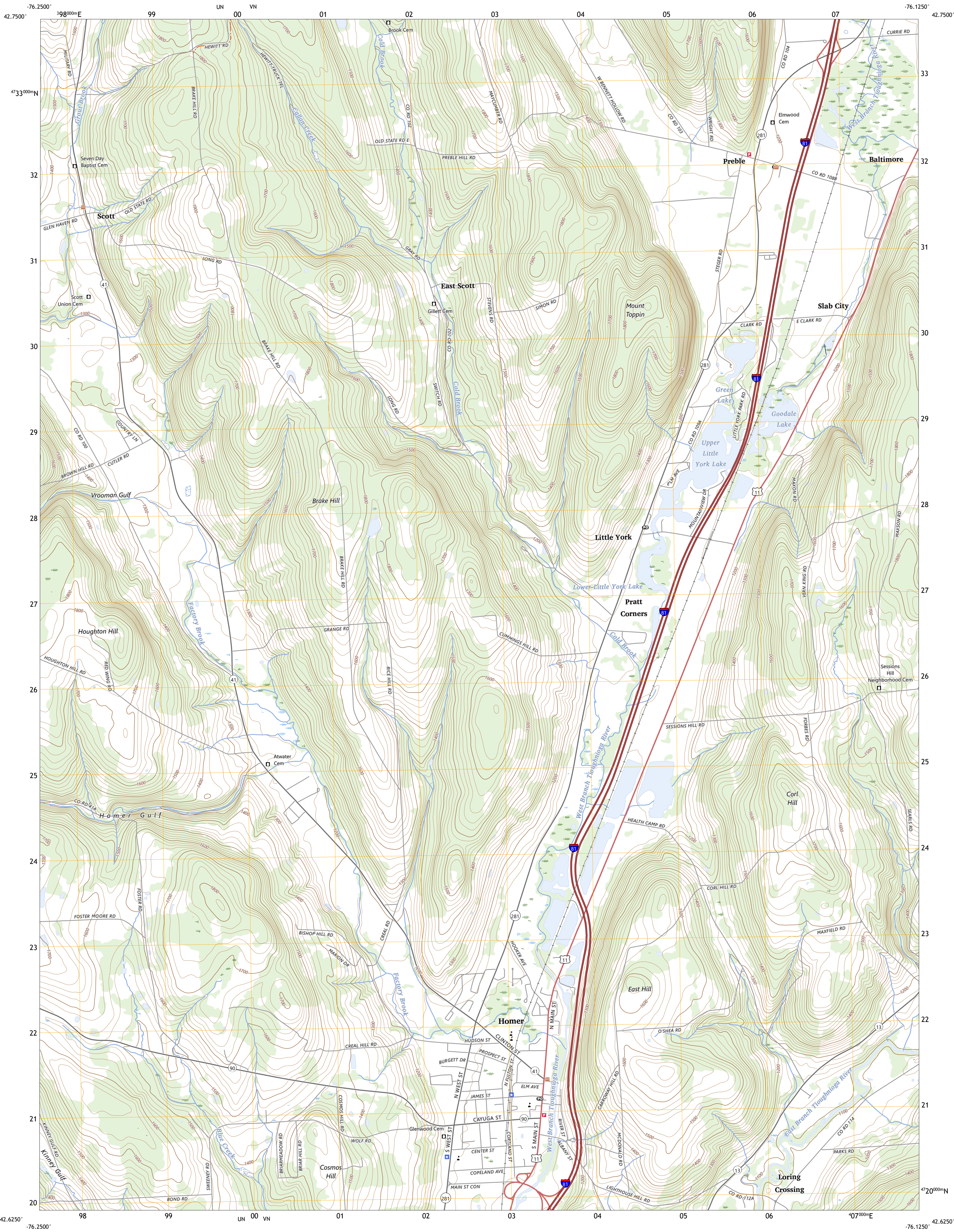




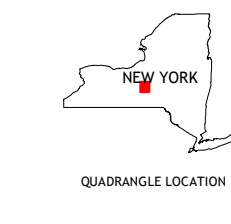
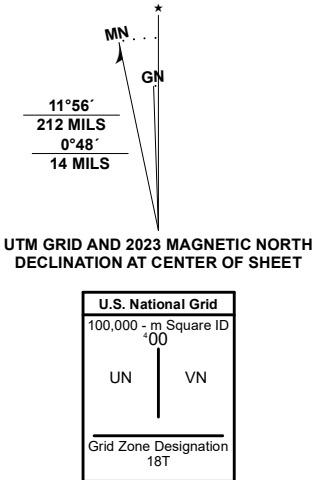
U.S. DEPARTMENT OF THE INTERIOR  
U.S. GEOLOGICAL SURVEY



HOMER QUADRANGLE  
NEW YORK - CORTLAND COUNTY  
7.5-MINUTE SERIES



Produced by the United States Geological Survey  
North American Datum of 1983 (NAD83)  
World Geodetic System of 1984 (WGS84) Projection and  
1 000-meter grid/Universal Transverse Mercator, Zone 18T  
This map is not a legal document. Boundaries may be  
generalized for this map scale. Private lands within government  
reservations may not be shown. Obtain permission before  
entering private lands.  
Imagery.....NAIP, October 2017 - December 2017  
Roads.....U.S. Census Bureau 2016  
Names.....GNIS, 1980 - 2023  
Hydrography.....National Hydrography Dataset, 2001 - 2021  
Contours.....National Elevation Dataset, 1999  
Boundaries.....Multiple sources; see metadata file 2021 - 2022  
Wetlands.....FWS National Wetlands Inventory 1986



1	2	3
4	5	6
7	8	9

ADJOINING QUADRANGLES

1 Spafford  
2 Otisco Valley  
3 Tully  
4 Sempronius  
5 Truxton  
6 Groton  
7 Cortland  
8 McGraw

ROAD CLASSIFICATION		
Expressway	Local Connector	State Route
Secondary Hwy	Local Road	
Ramp	4WD	
Interstate Route	US Route	

HOMER, NY  
2023

