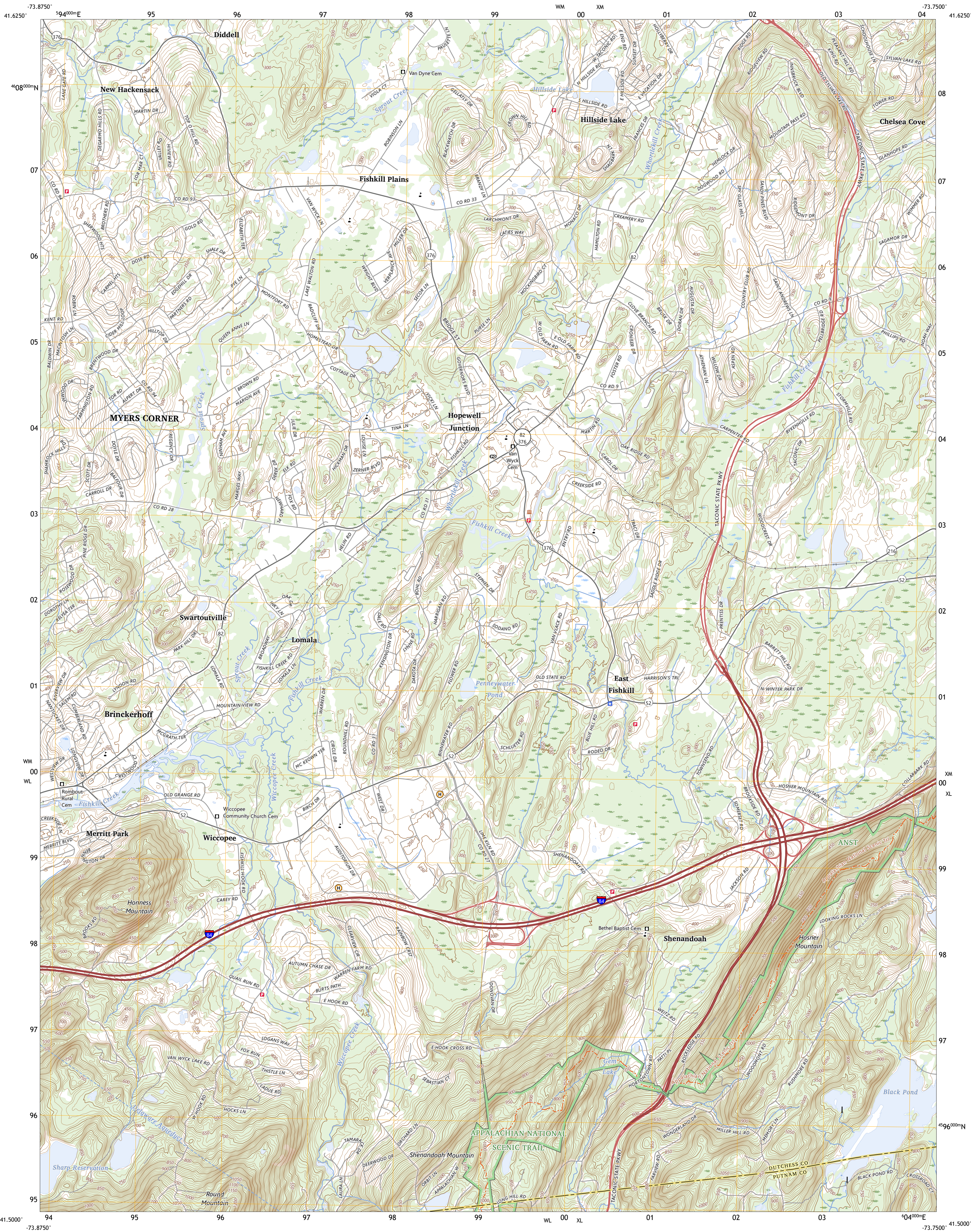




U.S. DEPARTMENT OF THE INTERIOR
U.S. GEOLOGICAL SURVEY

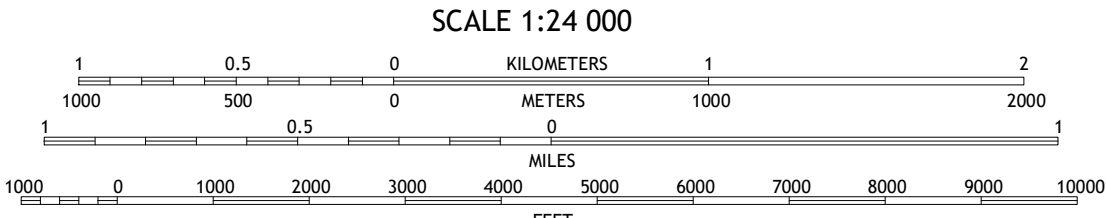
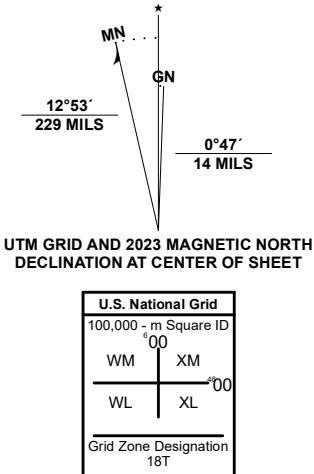


HOPEWELL JUNCTION QUADRANGLE
NEW YORK
7.5-MINUTE SERIES



Produced by the United States Geological Survey

North American Datum of 1983 (NAD83)
World Geodetic System of 1984 (WGS84) Projection and
1 000-meter grid/Universal Transverse Mercator, Zone 18T
This map is not a legal document. Boundaries may be
generalized for this map scale. Private lands within government
reservations may not be shown. Obtain permission before
entering private lands.
Imagery.....NAIP, August 2017 - December 2017
Roads.....U.S. Census Bureau, 2016
Names.....GNIS, 1980 - 2023
Hydrography.....National Hydrography Dataset, 2002 - 2021
Contours.....National Elevation Dataset, 2016
Boundaries.....Multiple sources; see metadata file 2020 - 2022
Wetlands.....FWS National Wetlands Inventory 1990 - 2004



1	2	3
4	5	6
7	8	9

- 1 Poughkeepsie
- 2 Pleasant Valley
- 3 Verbank
- 4 Wappingers Falls
- 5 Poughkeepsie
- 6 West Point
- 7 Ossawana Lake
- 8 Lake Carmel

ROAD CLASSIFICATION	
Expressway	Local Connector
Secondary Hwy	Local Road
Ramp	4WD
Interstate Route	US Route
	State Route

HOPEWELL JUNCTION, NY
2023

