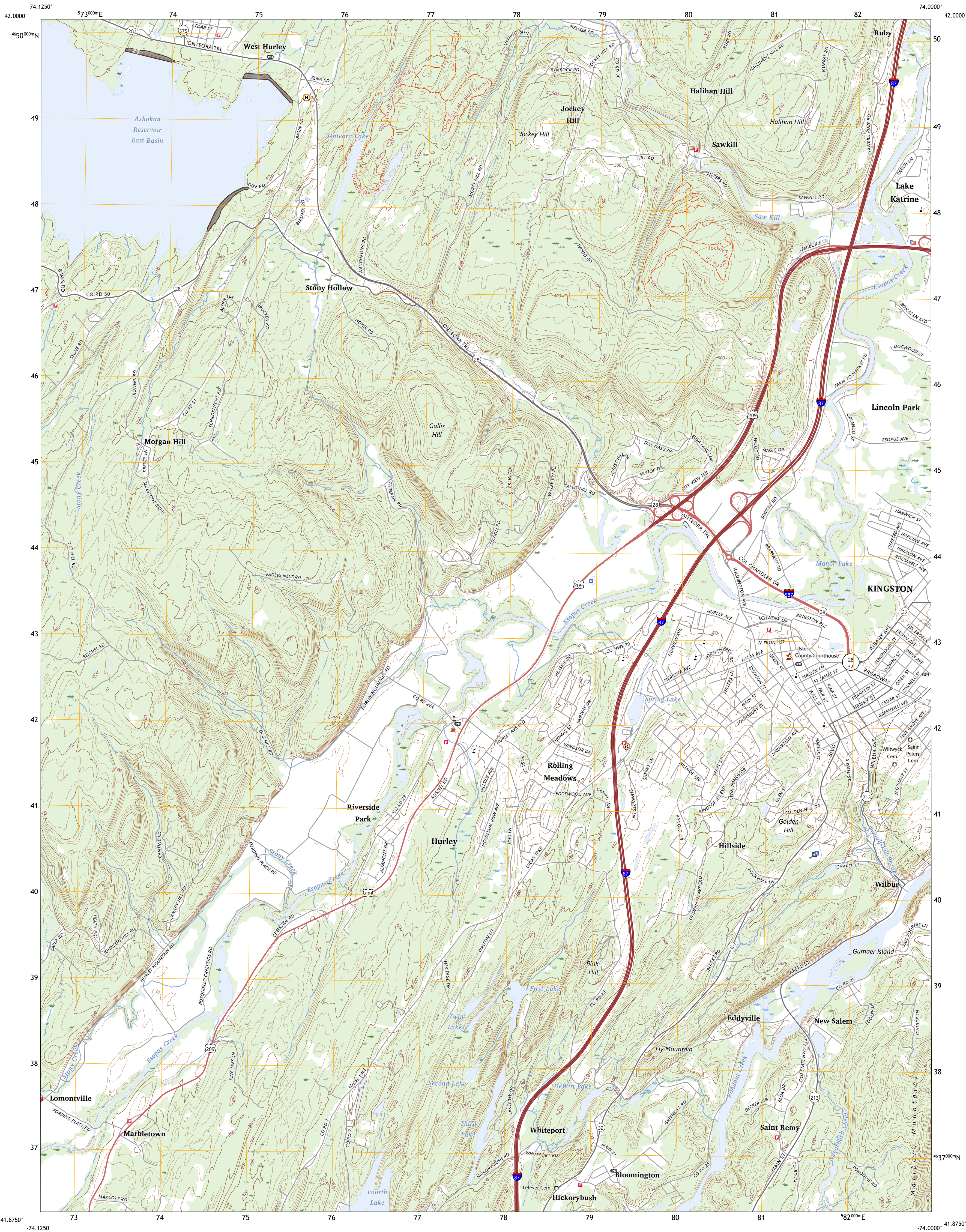




U.S. DEPARTMENT OF THE INTERIOR  
U.S. GEOLOGICAL SURVEY



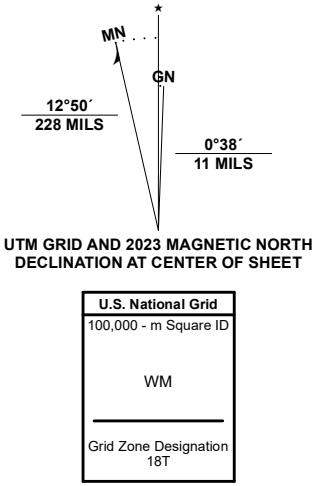
KINGSTON WEST QUADRANGLE  
NEW YORK - ULSTER COUNTY  
7.5-MINUTE SERIES



Produced by the United States Geological Survey

North American Datum of 1983 (NAD83)  
World Geodetic System of 1984 (WGS84). Projection and  
1 000-meter grid/Universal Transverse Mercator, Zone 18T  
This map is not a legal document. Boundaries may be  
generalized for this map scale. Private lands within government  
reservations may not be shown. Obtain permission before  
entering private lands.

Imagery.....NAIP, August 2017 - December 2017  
Roads.....U.S. Census Bureau, 2016  
Names.....GNS, 1980 - 2023  
Hydrography.....National Hydrography Dataset, 2002 - 2023  
Contours.....National Elevation Dataset, 2016  
Boundaries.....Multiple sources; see metadata file 2021 - 2022  
Wetlands.....FWS National Wetlands Inventory 1990 - 2004



1	2	3
4	5	6
7	8	9

ADJOINING QUADRANGLES

1 Bearsville  
2 Woodstock  
3 Saugerties  
4 Ashokan  
5 Kingston East  
6 Mohonk Lake  
7 Rosendale  
8 Hyde Park

ROAD CLASSIFICATION	
Expressway	Local Connector
Secondary Hwy	Local Road
Ramp	4WD
Interstate Route	US Route
	State Route

KINGSTON WEST, NY  
2023

