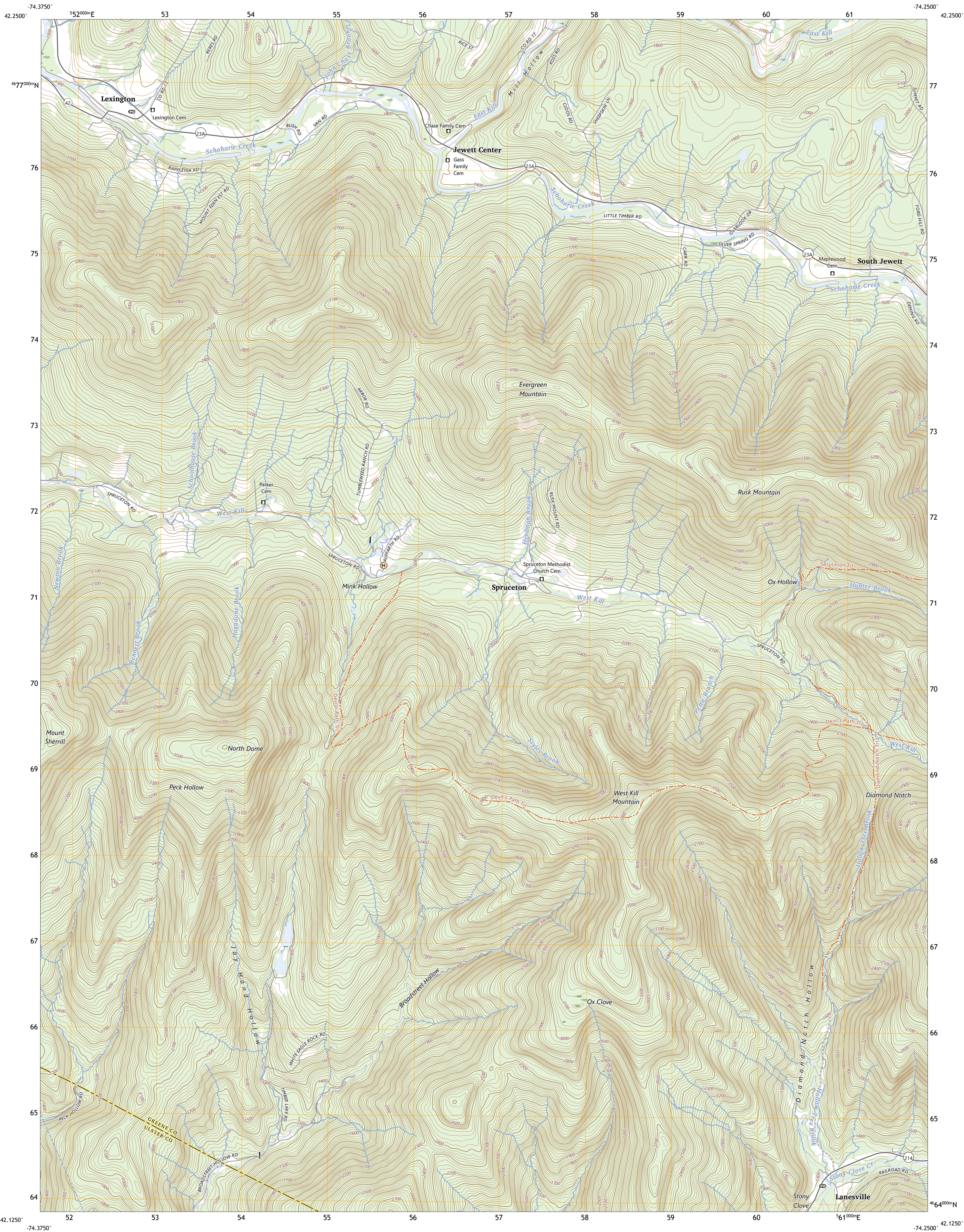




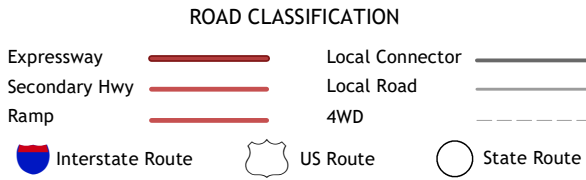
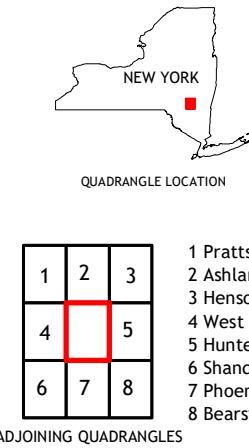
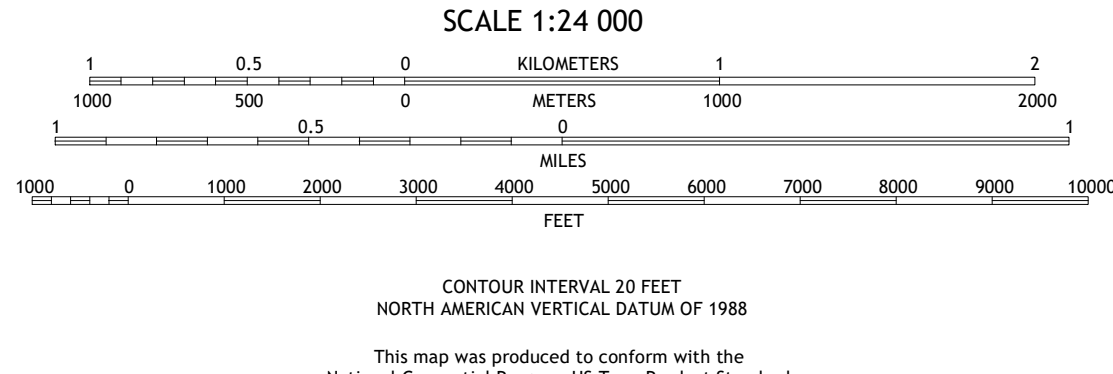
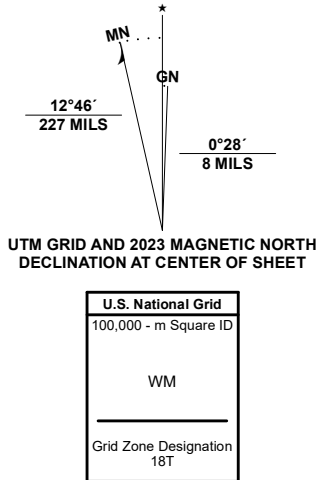
U.S. DEPARTMENT OF THE INTERIOR
U.S. GEOLOGICAL SURVEY



LEXINGTON QUADRANGLE
NEW YORK
7.5-MINUTE SERIES



Produced by the United States Geological Survey
North American Datum of 1983 (NAD83)
World Geodetic System of 1984 (WGS84). Projection and
1 000-meter grid/Universal Transverse Mercator, Zone 18T
This map is not a legal document. Boundaries may be
generalized for this map scale. Private lands within government
reservations may not be shown. Obtain permission before
entering private lands.
Imagery.....NAIP, October 2017 - December 2017
Roads.....U.S. Census Bureau 2016
Names.....GNIS, 1980 - 2022
Hydrography.....National Hydrography Dataset, 2001 - 2022
Contours.....National Elevation Dataset, 1998
Boundaries.....Multiple sources; see metadata file 2021 - 2022
Wetlands.....FWS National Wetlands Inventory 1990 - 2003



1	2	3
4	5	6
7	8	9

1 Prattsville
2 Ashland
3 Hensonville
4 West Kill
5 Hunter
6 Shandaken
7 Phenicia
8 Bearsville

LEXINGTON, NY
2023

