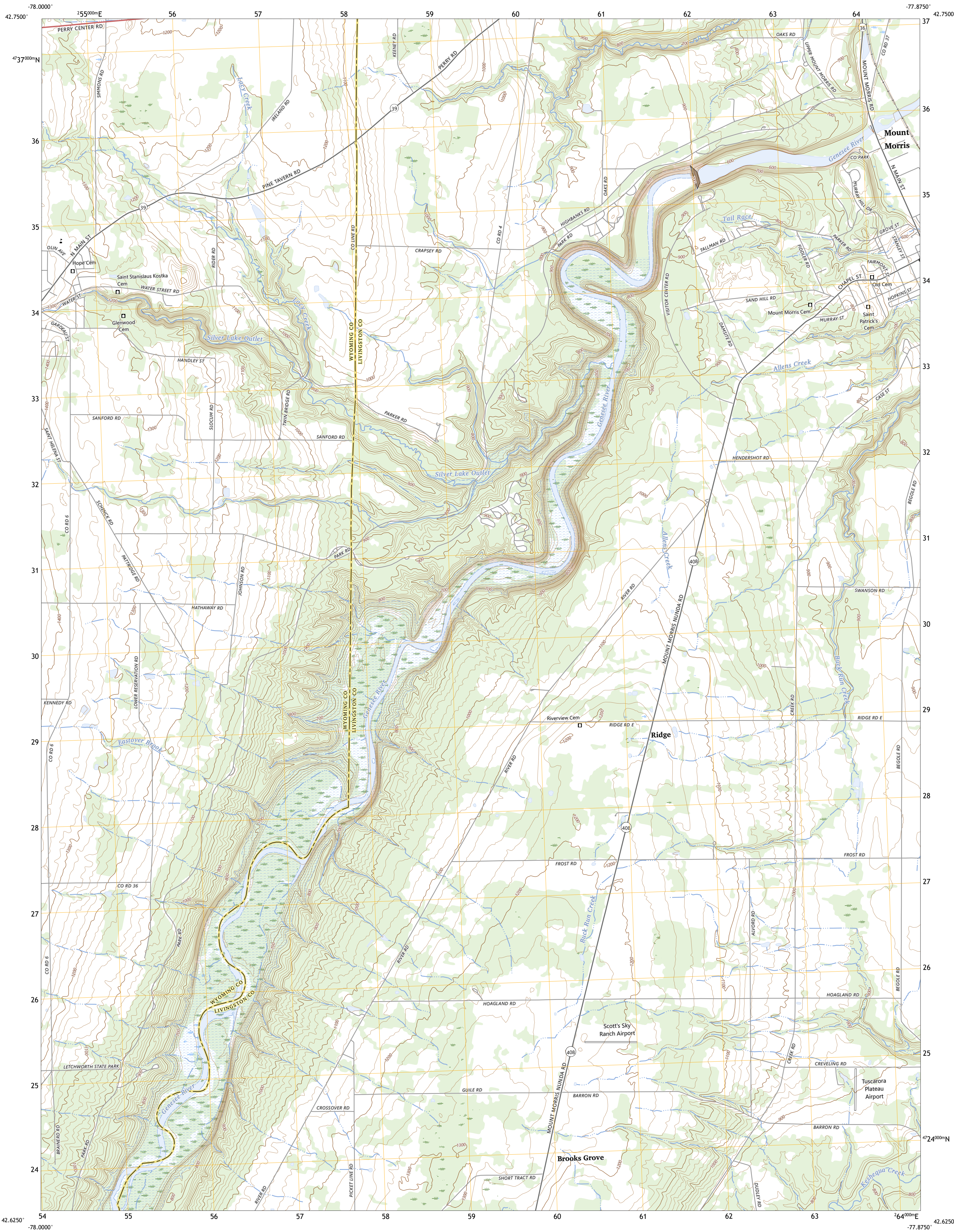




U.S. DEPARTMENT OF THE INTERIOR  
U.S. GEOLOGICAL SURVEY

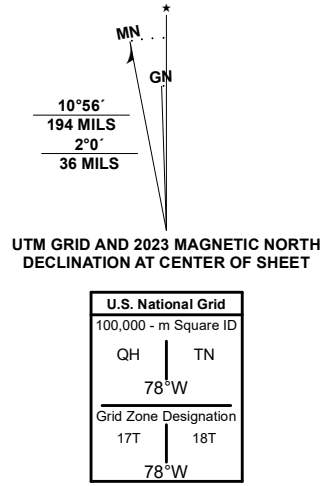


MOUNT MORRIS QUADRANGLE  
NEW YORK  
7.5-MINUTE SERIES



Produced by the United States Geological Survey

North American Datum of 1983 (NAD83)  
World Geodetic System of 1984 (WGS84) Projection and  
1 000-meter grid/Universal Transverse Mercator, Zone 17T18T  
This map is not a legal document. Boundaries may be  
generalized for this map scale. Private lands within government  
reservations may not be shown. Obtain permission before  
entering private lands.  
Imagery.....NAIP, October 2017 - December 2017  
Roads.....U.S. Census Bureau 2016  
Names.....GNIS, 1980 - 2023  
Hydrography.....National Hydrography Dataset, 2002 - 2019  
Contours.....National Elevation Dataset, 2021  
Boundaries.....Multiple sources; see metadata file 2021 - 2022  
Wetlands.....FWS National Wetlands Inventory 1985 - 1986



CONTOUR INTERVAL 20 FEET  
NORTH AMERICAN VERTICAL DATUM OF 1988  
This map was produced to conform with the  
National Geospatial Program US Topo Product Standard.



1	2	3
4	5	6
7	8	9

ADJOINING QUADRANGLES

ROAD CLASSIFICATION	
Expressway	Local Connector
Secondary Hwy	Local Road
Ramp	4WD
Interstate Route	US Route
	State Route

MOUNT MORRIS, NY  
2023

