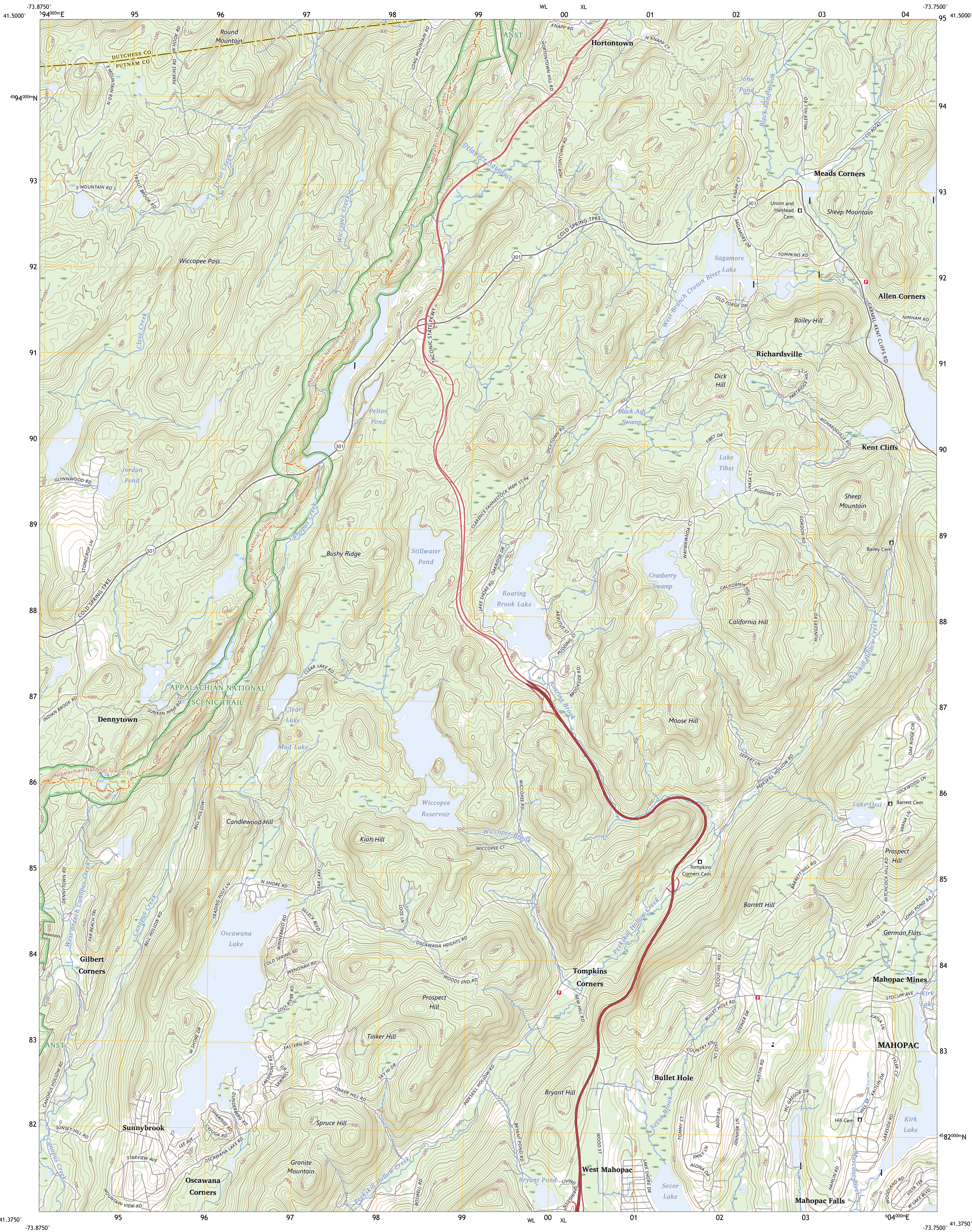




U.S. DEPARTMENT OF THE INTERIOR
U.S. GEOLOGICAL SURVEY



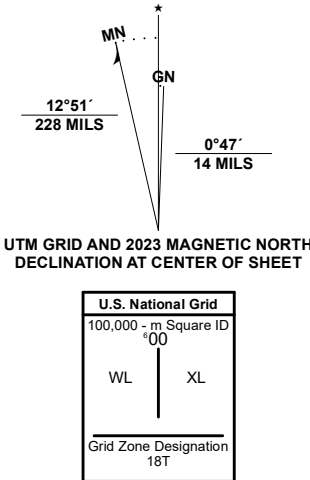
OSCAWANA LAKE QUADRANGLE
NEW YORK
7.5-MINUTE SERIES



Produced by the United States Geological Survey

North American Datum of 1983 (NAD83)
World Geodetic System of 1984 (WGS84). Projection and
1 000-meter grid/Universal Transverse Mercator, Zone 18T
This map is not a legal document. Boundaries may be
generalized for this map scale. Private lands within government
reservations may not be shown. Obtain permission before
entering private lands.

Imagery.....NAIP, August 2017 - December 2017
Roads.....U.S. Census Bureau, 2016
Names.....GNIS, 1980 - 2023
Hydrography.....National Hydrography Dataset, 2002 - 2020
Contours.....National Elevation Dataset, 1999
Boundaries.....Multiple sources; see metadata file 2020 - 2022
Wetlands.....FWS National Wetlands Inventory 1990 - 2011



CONTOUR INTERVAL 20 FEET
NORTH AMERICAN DATUM OF 1983
This map was produced to conform with the
National Geospatial Program US Topo Product Standard.



1	2	3
4	5	6
7	8	9

- 1 Wappingers Falls
- 2 Hopewell Junction
- 3 Poughkeepsie
- 4 West Point
- 5 Lake Carmel
- 6 Peekskill
- 7 Mohegan Lake
- 8 Croton Falls

ROAD CLASSIFICATION
Expressway
Secondary Hwy
Ramp
Interstate Route
US Route
State Route
Local Connector
Local Road
4WD

OSCAWANA LAKE, NY
2023

